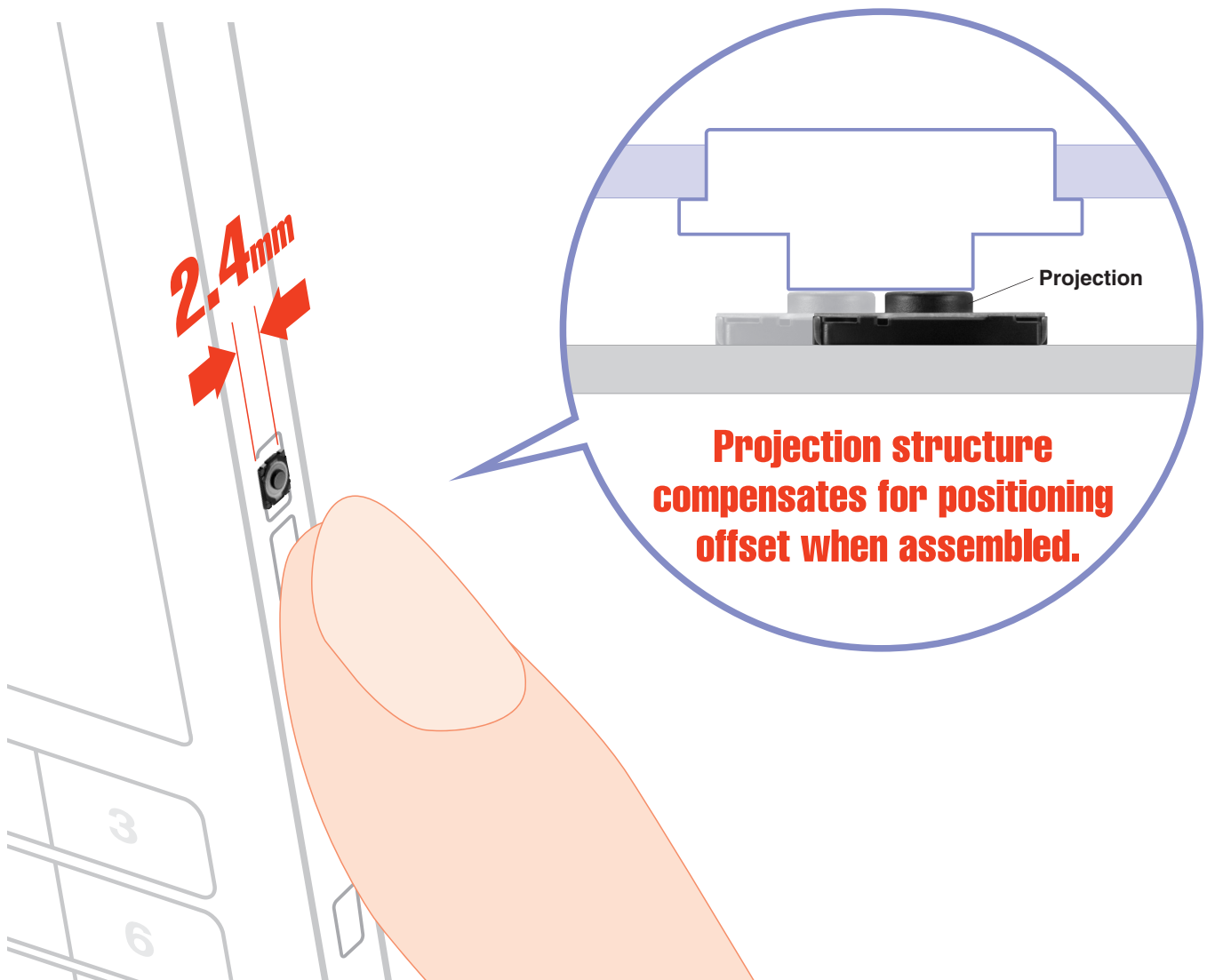


TACT Switch[™] Projection Type

SKSF Series

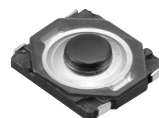
NEW
2009

Projection structure allows certain press for side keys.



Industry-smallest dimensions of 2.8×2.4×0.65mm(W×D×H) contribute to downsizing set products.

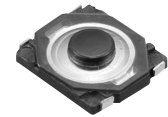
- Our original metal contact structure gives sharp clicking feel.
- Operating life of 100,000 cycles
- Reflow solderable



2.8mm	Full size
	2.4mm
	0.65mm

TACT Switch™ Projection Type

SKSF Series



Equipped with projection for suppressing contact feel change due to positioning offset when assembled.

Applications

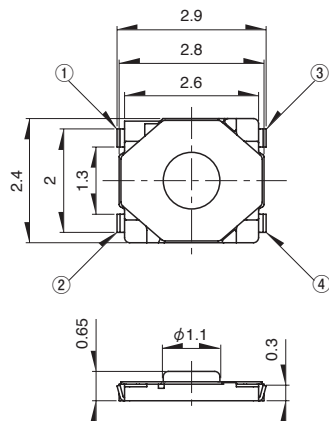
For mobile phones, digital still cameras, portable audio equipment, etc.

Typical Specifications

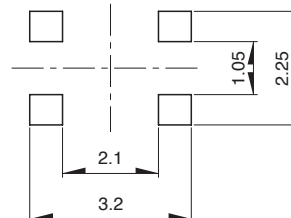
Items	Specifications
Dimensions (W×D×H)	2.8×2.4×0.65mm
Operating force	1.6N
Operating direction	Vertical
Travel	0.1mm
Rating (max.)	50mA 12V DC
Operating life	100,000cycles
Initial contact resistance	100mΩ max.

Dimensions

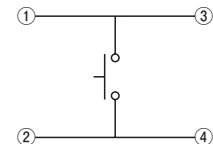
Unit:mm



PC board land dimensions
(viewed from switch mounting face)

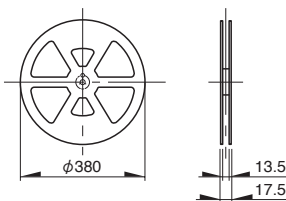


Circuit Diagram



Specification of Embossed Taping Package (Taping Packaging for Auto-insertion)

Unit:mm



Number of packages (pcs.)			Tape width (mm)
1 reel	1 case/Japan	1 case/ export packing	12
20,000	200,000	200,000	

Precautions when handling our products

- For the export of products which are controlled items subject to foreign and domestic export laws and regulations, you must obtain approval and/or follow the formalities of such laws and regulations.
- Products must not be used for military and/or antisocial purposes such as terrorism, and shall not be supplied to any party intending to use the products for such purposes.
- Unless provided otherwise, the products have been designed and manufactured for application to equipment and devices which are sold to end-users in the market, such as AV (audio visual) equipment, home electric equipment, office and commercial electronic equipment, information and communication equipment or amusement equipment. The products are not intended for use in, and must not be used for, any application of nuclear equipment, driving control equipment for aerospace or any other unauthorized use.
With the exception of the above mentioned banned applications, for applications involving high levels of safety and liability such as medical equipment, burglar alarm equipment, disaster prevention equipment and undersea equipment, please contact an Alps sales representative and/or evaluate the total system on the applicability. Also, implement a fail-safe design, protection circuit, redundant circuit, malfunction protection and/or fire protection into the complete system for safety and reliability of the total system.
- Before using products which were not specifically designed for use in automotive applications, please contact an Alps sales representative.

Cautions for using this catalog

- The colors of the products in the catalog may slightly differ from those of the actual products.
- The external appearance, functions and other specifications herein may be changed for improvement and other reasons without prior notice. Furthermore, the products herein may discontinue without prior notice.
- TACT Switch is a trademark or registered trademark of ALPS ELECTRIC CO., LTD. in Japan.
- All product names, company names and names of standards described in this catalog are trademarks or registered trademarks of their respective owners.
- The contents of this catalog are according to Alps Electric as of January 2009.
- This catalog is valid until the end of December 2009.

Inquiries about Products

Products Information Center
+81 (3) 5499-8154
Product information site
<http://www3.alps.com/e/>

Perfecting the Art of Electronics

ALPS
ALPS ELECTRIC CO., LTD.
1-7, Yukigaya-otsukamachi, Ota-ku, Tokyo, 145-8501, Japan