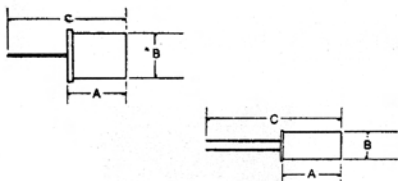
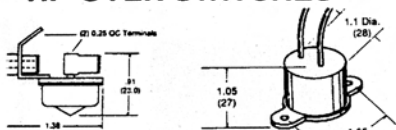


METAL TILT SWITCHES General Purpose



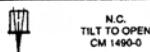
PART No.	FIG.	A Inch (mm)	B Inch (mm)	C Inch (mm)	MAX. DIFF. ANGLE	RATINGS (AMPS)						FEATURES
						AC			DC			
						30V	120V	240V	30V	120V	240V	
CM 100-0	1	.38 (9.7)	.32 (8.1)	.82 (20.8)	10°	2	1	.75	.7	.5	.2	Low Cost Stock Item
CM 1300-0	1			.88 (22.3)	10°	1	.5	.3	.5	.2	.1	Low Cost
CM 1323-0	2	.4 (10.2)	.19 (4.7)	0.76 (19)	10°	.5	.25	.2	.5	.2	.1	Stock Item (2) Electrodes
CM 1320-0	2			1.075 (27)	10°	.5	.25	.2	.5	.2	.1	Stock Item (2) Electrodes

TIP-OVER SWITCHES

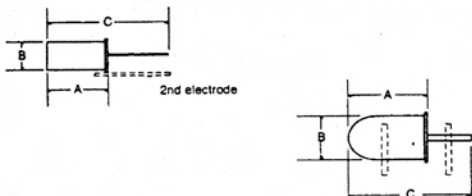


FEATURES:
These switches operate when tilted in any direction from their normally vertical position. Normally open (tilt to close) and normally closed (tilt to open) are available.

PART No.	TERMINAL STYLE	CONTACT	OPERATE ANGLE	RATINGS (AMPS)					
				AC			DC		
				30V	120V	240V	30V	120V	240V
CM 1535-75	Two .25" Male QC Terminals With Nylon Bushing for Mounting	N.C.	35° + - 10°	30	12.5	7	15	8	5
CM 1535-70	Epoxy Seated Plastic Housing Mount on Horizontal Surface	N.C.	35° + - 10°	30	12.5	7	15	8	5
CM 1445-0	Single Electrode	N.O.	45° + - 10°	2	1	-	0.7	0.5	-
CM 1490-0		N.C.	45° + - 15°	2	1	-	0.7	0.5	-



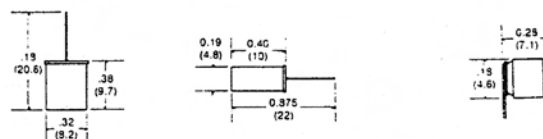
NON-MERCURY TILT SWITCHES



PART No.	FIG.	A Inch (mm)	B Inch (mm)	C Inch (mm)	MAX. DIFF. ANGLE	RATINGS (AMPS)			FEATURES
						AC	DC	DC	
						30V	120V	240V	
CW 1300-0	1	.40 (10)	.19 (4.7)	.88 (22)	15°	60V AC/DC max. 3 VA max. 0.25 Amp max. 30 Ohm max. resistance			Single Electrode
CW 1300-1	1								2nd Electrode on case
CW 1600-0	2	.22 (5.6)	.14 (3.5)	0.34 (8.7)	15°	60V max. 30 VA max. 0.25 Amp max.			Miniature 30 ohm max.
CW 1600-1	2								

MOTION/VIBRATION SENSORS

Designed for applications having the need to sense when the system is at rest or in motion.



FOR USE IN:
Smart Appliances - Turns off power when not in use.
Portable Devices - Conserves battery power.
Anti-Theft - Sounds alarm if unit is moved by unauthorized person.
Man-Down Alarm - Detects if the user has not moved within a set time period.

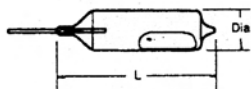
CM4400-0
Mercury Contact
Always OFF when at rest

CW1300-0*
Non-Mercury Contact
May be ON or OFF when at rest

CM1800-1
Mercury Contact
May be ON or OFF when at rest

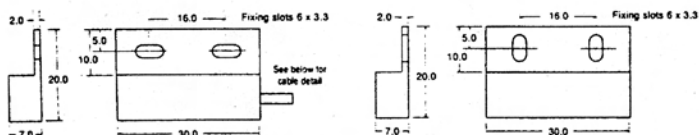
Movement causes intermittent contact

GLASS TILT SWITCHES



PART No.	L Inch (mm)	DIA Inch (mm)	MAX. DIFF. ANGLE	RATINGS (AMPS)						FEATURES	Mount Clips
				AC			DC				
				30V	120V	240V	30V	120V	240V		
CB 17-0	1.38 (35)		10°	6	3	2	4	2	1	Low Cost Standard	
CB 17-1	1.5 (38)		10°	6	3	2	4	2	1	7" Flex Lead Wire	
CB 51-0	1.0 (25.4)	.32 (8.1)	2°	3	1	.5	2	.5	.1	Low Angle	3BH
CB 51-1	1.2 (30.5)		2°	3	1	.5	2	.5	.1	7" Flex Lead Wire	
CA 20-0	.5 (3.9)	.155 (3.9)	10°	.25	.1	.05	.15			Smallest Switch	

Magnetic Proximity Switches



PSA 100/30 PSA 240/30
PSB 175/30 PSC 175/30

PSM
MAGNET

PART No.	FORM	CONTACT		
		RATING - VA	MAX. VOLTS	AMP
PSA 100/30	1A	5	100	0.25
PSA 240/30	1A	10	240	0.50
PSC 175/30	1C	5	175	0.25
PSM		MAGNET		