



## RS8 and RS8SC

8-PIN OCTAL-TYPE SOCKET ASSEMBLIES

## RS SERIES



### SPECIFICATIONS

**rating:** 10 amps, 250 volts.

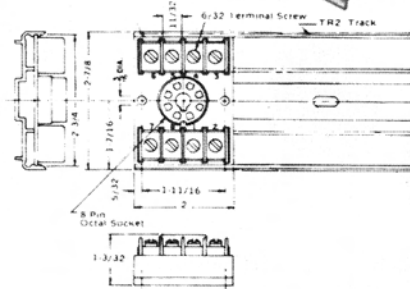
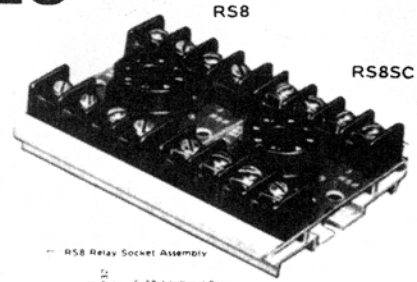
**track:** TR 2

48" length holds up to 24 sockets.

**terminals:** RS8 — No. 6-32 screws, 7/16" C. to C. spacing.  
RS8SC — No. 6-32 screws with captivated wire clamp, 7/16" C. to C. spacing (no lugs required).

**wire:** RS8 — up to No. 12AWG (lugs are recommended on wire larger than No. 16AWG).  
RS8SC — up to two No. 12AWG.

**sockets:** 8-pin octal receptacle to accept standard 2PDT relays and timers. Recessed slotted center post chamber allows relays to be rocked out without danger of damaging relay center posts. PC board has center post clearance hole to allow relays with screws in center post. Phosphor bronze contacts for better pin contact and retention.



## RS11 and RS11SC

11-PIN OCTAL-TYPE SOCKET ASSEMBLIES

### SPECIFICATIONS

**rating:** 10 amps, 250 volts.

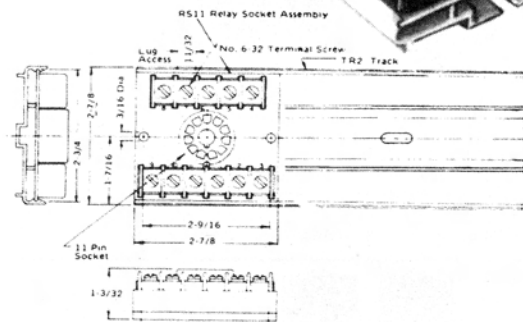
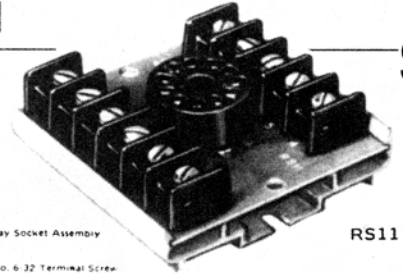
**track:** TR 2

48" length holds up to 16 sockets.

**terminals:** RS11 — No. 6-32 screws, 7/16" C. to C. spacing.  
RS11SC — captivated wire clamp, 7/16" C. to C.

**wire:** RS11 — up to No. 12AWG. (lugs are recommended on wire larger than 16AWG).  
RS11SC — up to two No. 12AWG.

**sockets:** 11-pin octal receptacle to accept 3PDT relays. Refer to RS8 socket for features.



## RS2, RS4 and RS6

10, 16, and 22-PIN SQUARE-BASE MINIATURE RELAY-TYPE SOCKET ASSEMBLIES

### SPECIFICATIONS

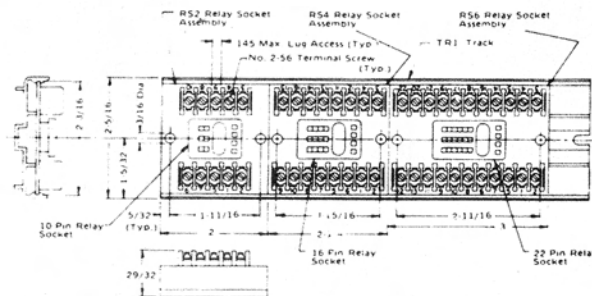
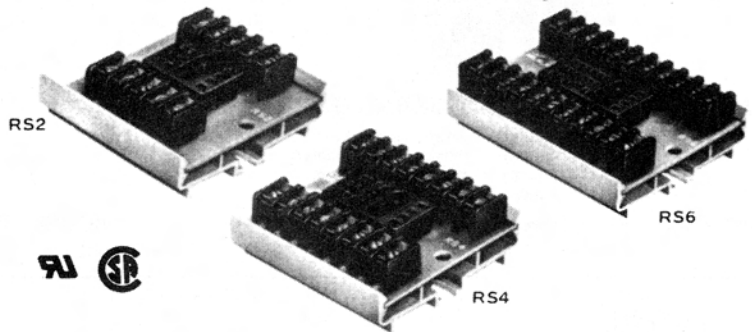
**rating:** 5 amps, 125 volts. (UL rated 3 amps, 125 volts)  
**track:** TR 1

48" length holds up to 24 RS2 sockets, 21 RS4 sockets and 16 RS6 sockets.

**terminals:** No. 2-56 screws with clamp — 1/4" C. to C. spacing.

**wire:** up to No. 16AWG.

**sockets:** RS2 — 10-pin receptacle to accept miniature 2PDT relays with latching coils.  
RS4 — 16-pin receptacle to accept miniature 4PDT relays with latching coils.  
RS6 — 22-pin receptacle to accept miniature 6PDT relays with latching coils.



# 9 SOCKETS