

As the leading manufacturer of reed switches, Hamlin offers the most diverse product line available. Dry and mercury wetted magnetic reed switches are designed and produced for reliable operation under the most critical conditions. These switches are hermetically sealed for safe dependable use in hostile atmospheres.

For detailed product information send for the Hamlin Reed Switch Catalog. The catalog provides complete information regarding specifications, dimensions, theory of operation, magnetic actuators, and reed switch application data.

## MINIATURE MAGNETIC REED SWITCHES

| SWITCH MODEL NUMBER | FORM | DIM. CODE | MAX. DC RATINGS | MAX. SWITCH AMPS | MAX. DC VOLTS | A.T. PULL-IN RANGE* | SPECIAL FEATURES      | ACTUATOR MAGNET |
|---------------------|------|-----------|-----------------|------------------|---------------|---------------------|-----------------------|-----------------|
| MITI-3              | A    | 10        | 3W              | .25              | 150           | 10-25               | MICROMINIATURE        | H-31            |
| MDSR-7              | A    | 1         | 10W             | .50              | 200           | 10-25               | MINIATURE SIZE        | H-31            |
| MDSR-5              | A    | 2         | 10W             | 1.20             | 600           | 22-38               | BREAKDOWN 1500 VOLTS  | H-33            |
| MDRR-6              | A    | 2         | 10W             | .50              | 300           | 12-38               | HIGH VOLTAGE HOLD-OFF | H-33            |
| MDSR-4              | A    | 2         | 10W             | .50              | 200           | 12-38               | .090 DIAMETER         | H-33            |
| MLRR-4              | A    | 3         | 20W             | 1.00             | 200           | 12-38               | HIGH INRUSH           | H-33            |
| MLRR-2              | A    | 4         | 20W             | 1.00             | 200           | 12-38               | HIGH INRUSH           | H-33            |
| MARR-2              | A    | 4         | 10W             | .75              | 200           | 12-38               | HIGH REL              | H-33            |
| MRPR-8              | A    | 5         | 50W             | 1.00             | 250           | 22-43               | HIGH VOLTAGE          | H-33            |
| MARR-5              | A    | 4         | 10W             | .50              | 1000          | 22-38               | BREAKDOWN 2000 VOLTS  | H-33            |
| MRPR-2              | A    | 5         | 50W             | 1.50             | 200           | 22-43               | HIGH CURRENT          | H-33            |
| MDRR-DT             | C    | 7         | 5W              | .25              | 175           | 15-35               | SMALL SIZE            | H-33            |

## STANDARD SIZE MAGNETIC REED SWITCHES

|         |   |   |     |      |     |       |                        |      |
|---------|---|---|-----|------|-----|-------|------------------------|------|
| DRR-DTH | C | 8 | 30W | .50  | 250 | 50-80 | HIGH VOLTAGE BREAKDOWN | H-32 |
| DRT-DTH | C | 8 | 50W | 1.50 | 500 | 50-80 |                        |      |

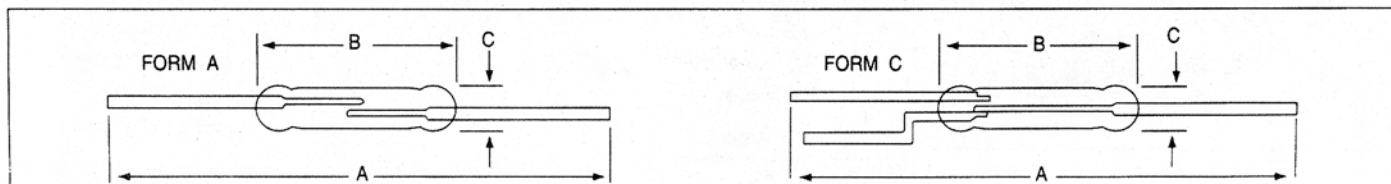
## HIGH CURRENT MAGNETIC REED SWITCHES

|         |   |   |      |      |     |       |              |      |
|---------|---|---|------|------|-----|-------|--------------|------|
| DRR-129 | A | 9 | 100W | 3.00 | 400 | 42-83 | HIGH CURRENT | H-34 |
|---------|---|---|------|------|-----|-------|--------------|------|

## MERCURY WETTED MAGNETIC REED SWITCHES

|       |   |   |     |      |     |       |                |      |
|-------|---|---|-----|------|-----|-------|----------------|------|
| MDC-3 | A | 6 | 50W | 2.00 | 500 | 35-50 | MERCURY WETTED | H-33 |
|-------|---|---|-----|------|-----|-------|----------------|------|

## SWITCH DIMENSIONS



| **DIMENSION CODE |                        | 1          | 2     | 3     | 4     | 5     | 6     | 7     | 8     | 9     | 10    |
|------------------|------------------------|------------|-------|-------|-------|-------|-------|-------|-------|-------|-------|
| A                | OVERALL LENGTH NOMINAL | INCH 1.590 | 1.590 | 1.590 | 2.230 | 2.230 | 1.580 | 2.066 | 3.375 | 3.250 | 1.235 |
|                  |                        | MM 40.38   | 40.38 | 40.38 | 56.65 | 56.64 | 40.13 | 52.47 | 85.72 | 82.55 | 31.36 |
| B                | GLASS LENGTH MAX.      | INCH .500  | .600  | .600  | .800  | .800  | .550  | .580  | 1.562 | 2.000 | .270  |
|                  |                        | MM 12.70   | 15.24 | 15.24 | 20.32 | 20.32 | 13.97 | 14.73 | 39.67 | 50.80 | 6.86  |
| C                | GLASS DIAMETER MAX.    | INCH .070  | .090  | .105  | .105  | .112  | .100  | .105  | .218  | .207  | .070  |
|                  |                        | MM 1.78    | 2.280 | 2.660 | 2.660 | 3.300 | 2.540 | 2.660 | 5.54  | 5.250 | 1.77  |

## ALNICO V PERMANENT MAGNETS

| MAGNET TYPE H-31 | MAGNET TYPE H-32 | MAGNET TYPE H-33 | MAGNET TYPE H-34 |
|------------------|------------------|------------------|------------------|
|                  |                  |                  |                  |