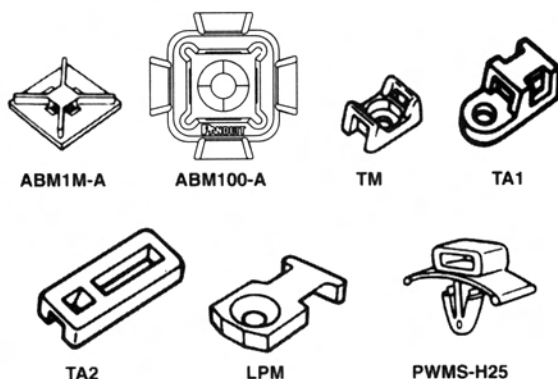


## CABLE TIE ACCESSORIES



Adhesive backed and screw applied mounts.

Mfr. No.	Mtg.	Used With Cable Ties†	Std. Pkg.
ABM1M-A-C	Adh.	M	100
ABMM-A-C	Adh.	M, I	100
ABM2S-A-C	Adh.	M, I, S	100
ABM100-A-C	Adh.	M, I, S	100
TM1S6-C	#6	M	100
TM2S8-C	#8	M, I, S	100
TM3S10-C	#10	M, I, S, H	100
TA1S8-C	#8	M, I, S	100
TA2-C	#10	M, I, S	100
TP2-C	#10	M, I, S	100
TP4H-C	1/4"	M, I, S, H	100
LPMM-S2-C	#2	M	100
LPMM-S5-C	#5	M	100
LPMS-S8-C	#8	M, I, S	100
PWMS-H25-C	1/4" hole	M, I, S	100

†Tie cross-section; M = Miniature, I = Intermediate, S = Standard, H = Heavy (including LH, excluding .35" heavy) U. L. Recognized.

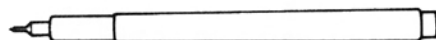
## NYLON MARKER PLATES



Used with cable ties. Can be mounted in any direction. Marked with nylon marking pens. Also available in rolls of 1000.

Mfr. No.	Size (In.)	Used with Cable Ties	Std. Pkg.
MP150-C	1 1/2 x 3/4	Miniature	100
MP175-C	1 3/4 x 3/4	Intermediate	100
MP200-C	2 x 3/4	Standard	100
MP250-C	2 1/2 x 3/4	Cross	100
MP350-C	3 1/2 x 3/4	Section	100
MP250W175-C	2 1/2 x 1 3/4		100

## NYLON MARKING PENS



Provide fast drying, permanent marking on any nylon part.

Mfr. No.	Tip Style	Color
PFX-0	Fine	Black
PFX-2	Fine	Red
PX-0	Reg.	Black
PX-2	Reg.	Red
PX-10	Reg.	White

## NYLON CIRCUIT BOARD POSTS & SUPPORTS



CBP series circuit board posts for board-to-board or board-to-chassis mounting. Accept up to 0.062" thick panel; have 0.156" dia. mounting hole. CBL5 series circuit board locking supports for board-to-chassis supporting. Types CBL518-C and CBL525-C for circuit boards; 0.062" thick panel with 0.156" dia. mounting holes. Type CBL550-C for chassis; 0.03" to 0.08" thick panel with 0.187" to 0.192" dia. mounting holes. All provide stability and are releasable/reusable. Sold in packages of 100.

Mfr. No.	Std. Height (In.)
CBP12-C	0.125
CBP25-C	0.250
CBP37-C	0.375
CBP50-C	0.500
CBP75-C	0.750
CBP100-C	1.000
CBL518-C	0.180
CBL525-C	0.250
CBL550-C	0.500

## NYLON WIRE STANDOFFS



Ideal for retaining wires, cable, components or tubing away from panel or conductive chassis. Finger-grip flange can be locked/unlocked. Hand installed in pre-drilled panel hole. Fit 0.187" to 0.192" dia. hole on 0.03" to 0.08" thick panel. UL recognized. Sold in packages of 100.

Mfr. No.	D (In.)	H (In.)
WS25-25-C	0.25	0.25
WS25-50-C	0.25	0.50
WS25-75-C	0.25	0.75
WS35-25-C	0.35	0.25
WS35-50-C	0.35	0.50
WS35-75-C	0.35	0.75
WS50-25-C	0.50	0.25
WS50-50-C	0.50	0.50
WS50-75-C	0.50	0.75
WS75-25-C	0.75	0.25
WS75-50-C	0.75	0.50
WS75-75-C	0.75	0.75

## TWISTER PUSH MOUNTS

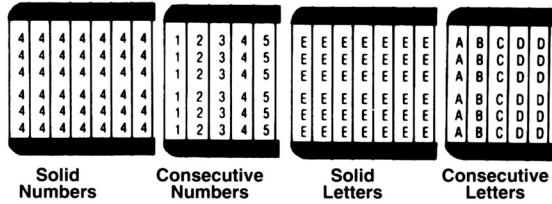


TPM mounts accept bundles up to .62" Recommended hole size, 5/32 - 3/16", recommended panel thickness .025 - .105". Twist ends to lock and release. Sold in packages of 100.

Mfr. No.	Standard Height (In.)
TPM-16-C	.00
TPM5-16-C	.20
TPM10-16-C	.39
TPM15-16-C	.59
TPM20-16-C	.79
TPM25-16-C	.98
TPM30-16-C	1.18

## WIRE MARKER CARDS

Quick identification of wires and cables.

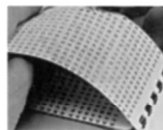


- Supplied on dispenser cards
- Self-laminating markers also available
- Vinyl impregnated cloth resists smearing

Mfr. No.	Legend	Markers/ Card	Std. Pkg.
<b>SOLID NUMBERS</b>			
PCM-0	0	36	25
PCM-1 thru PCM-99	1 thru 99	36	25
PCM-100 thru PCM-600	100 thru 600	25	25
PM-0 thru PM-100*	0 thru 100	150	25
<b>CONSECUTIVE NUMBERS</b>			
PCM-1-33	1-33	33	25
PCM-34-66	34-66	33	25
PCM-67-99	67-99	33	25
PCM-100-124	100-124	25	25
PCM-125-149	125-149	25	25
PCM-150-174	150-174	25	25
PCM-175-199	175-199	25	25
thru PCM-1975-1999	1975-1999	25	25
PM-0-49*	0 thru 49	3 ea.	25
PM-50-99*	50 thru 99	3 ea.	25
<b>SOLID LETTERS</b>			
PM-A thru PM-Z*	A thru Z	150	25
<b>CONSECUTIVE LETTERS</b>			
PCM-A-Z	2 ea. A-J 1 ea. K-Z	36	25
PCM-A-Z-0-9	1 ea. A-Z 1 ea. 0-9	36	25
PM-A-Z*	6 ea. A-T 5 ea. U-Z	150	25
<b>MINIATURE INSPECTION ARROWS</b>			
PARW125-RED	Blk on red	576	25
PARW125-YEL	Blk on yel	576	25
PARW125-WHT	Blk on wh	576	25

\*Miniature

## WIRE MARKER BOOKS



Mfr. No.	Legend	No. of Markers Per/Legend
PCMB-1	0 thru 9	45
PCMB-2	A thru Z	10
PCMB-3	0 thru 15, +, -, /	10
PCMB-4	1, 2, 3	150
PCMB-15	0 thru 45, +, -, /	10

Handy, convenient. Fits easily in shirt pocket. Each marker comes with matching terminal marker. 1/4" long.

## WRITE-ON SELF-LAMINATING MARKERS



For greater protection against water, grease, oil, solvents, etc. Available in full length and half-length markers.

Mfr. No.	Legend	No. of Markers Per/Legend
PSCB	†	†

† Contact Relay Specialties for colors available and quantity per page.

## SAFETY LOCKOUT/TAGOUT PRODUCTS



Meet requirements of OSHA 1910.147. **Type PSL-3** strong all-steel locks with protective blue bumper; each lock keyed differently. **Types PSL-1** lockout devices. **PSL-3** steel key locks, brass tags and collars. **Types PVT** "DANGER" tags, 3x5.75", in choice of five popular legends. **Type PST-3** self-laminating photo "DANGER" tag, 3x5.75", has place for photo under "DO NOT OPERATE" legend. All "DANGER" tags come with cable ties and grommets. **Type PLD-68** adhesive-backed "LOCKOUT" labels, 1.50x1" in red and white colors, come 200 labels per roll in a plastic dispenser.

Mfr. No.	Description	Fig.	No./ Pkg.
PSL-1	1" dia. jaw lockout device	A	12
PSL-1.5	1.50" dia. jaw lockout device	A	12
PSL-3 Blue	Steel key lock	B	6
PVT-13	Tag: "DO NOT OPEN"	C	5
PVT-24	Tag: "DO NOT START"	C	5
PVT-41	Tag: "DO NOT OPERATE"	C	5
PVT-96	Tag: "EQUIP. LOCKED OUT"	C	5
PVT-98	Tag: "EQUIP. LOCKED OUT BY"	C	5
PST-3	Photo Tag: "DO NOT OPERATE"	D	5
PLD-68	Labels: "LOCKOUT"	E	200

## WARNING & CAUTION LABELS



Meet requirements of OSHA 1910.145. **Type PSSB-13** vinyl film safety sign comes in 10-page books, 3 signs per page. **Types PLD** are pretitled labels on rolls in plastic dispensers. 5 popular legends. **Type PLD-71** legend: "Warning For Continued Protection...Use same Fuse".

Mfr. No.	Legend	Label Size (in.)	Color*
PSSB-13†	"Danger High Voltage"	1.5x3.1875	R, B on W
PLD-43‡	"Danger High-Voltage"	1.5x1	R, B on W
PLD-67‡	"Danger High-Voltage"§	1.5x1	R on W
PLD-71‡	Fuse Warning	2.0x1	W on B
PLD-76‡	"Caution Series Rated System"	1.5x1	B on Y
PLD-80‡	"Intrinsically Safe Wiring"	1.5x1	LB on W

\*R=red, B=black, W=white, Y=yellow, LB=light blue. †Labels in book. ‡Labels on rolls. §And symbol.

## CLIP-ON MARKERS

Easy to install flexible acetel markers snap on wire from supplied application wand. Can be removed and reused. Black legend on white background. Available in legends "A" thru "Z", "0" thru "9", + and - in seven wire range sizes. To order, choose the wire range you need and identify its corresponding type number. Add to the type number, as a suffix, the legend you want. For example: if you need number "B" in the wire range 0.130-0.150" you would order PCA13-B.

Mfr. No.	Wire O.D. Range (in.)	Std. Pkg.
PCA07-*	0.075-0.098	300 Clips
PCA11-*	0.110-0.130	
PCA13-*	0.130-0.150	
PCA18-*	0.185-0.234	60 Clips
PCA23-*	0.234-0.367	
PCA36-*	0.360-0.450	
PCA45-*	0.453-0.617	

\*Add legend suffix: A thru Z, 0 thru 9, + or -

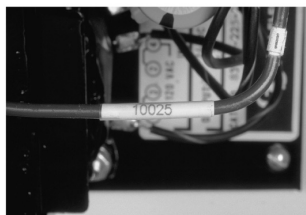
## VINYL CLOTH LARGE NUMBERS AND LETTERS



Available in black legends "A" thru "Z" and "0" thru "9" on yellow background. Assorted heights. To order, add to the type number, as a suffix, the legend you want. For example: type PCL025-7 or PCL025-P. Sold in packages of 25 cards per box.

Mfr. No.	Marker Size (in.)	Legend Height (in.)	Markers/ Card
PCL025-*	0.250 x 0.375	0.250	144
PCL037-*	0.344 x 0.500	0.375	78
PCL062-*	0.563 x 0.750	0.625	32
PCL100-*	0.875 x 1.500	1.000	10
PCL200-*	0.875 x 2.250	2.000	10
PCL300-*	1.500 x 3.500	3.000	6

\*Add legend suffix: A thru Z or 0 thru 9



## COMPUTER PRINTABLE ID PRODUCTS

### BLANK WHITE COMPUTER PRINTABLE LABELS

2 materials: 1) Polyester for indoor and outdoor applications; 2) Vinyl cloth with repositionable adhesive for indoor applications.

Stock Number	Type	Printer Type	Label Size W x L	Material	Labels Per Pkg.
	TTC45Y-1	Thermal Transfer	0.50" x 0.75"	Polyester	1000
	TTC7Y-10		1.00" x 0.38"	Polyester	10000
	TTC8Y-10		1.00" x 0.50"	Polyester	10000
	JL8Y-10	Ink Jet	0.38" x 1.00"	Polyester	10000
	JL9Y-10		0.50" x 1.00"	Polyester	10000
	JL3C-10		0.75" x 0.50"	Vinyl Cloth	10000
	PLL-6-Y2-10	Laser	0.80" x 0.50"	Polyester	10000
	PLL-8-Y2-10		1.00" x 0.38"	Polyester	10000
	PLL-9-Y2-5		1.00" x 0.50"	Polyester	5000
84F1791	PDL-43	Dot-Matrix	0.50" x 0.75"	Vinyl Cloth	5000
84F4572	PDL-39-10		0.75" x 0.25"	Polyester	10000
84F6096	PDL-31		1.00" x 0.38"	Polyester	5000
	PDL-19		1.00" x 0.50"	Vinyl Cloth	5000
	PDL-20		1.00" x 0.50"	Polyester	5000



## COMPUTER PRINTABLE ID PRODUCTS

### SELF-LAMINATING COMPUTER PRINTABLE LABELS

#### LABELS HAVE WHITE PRINT-ON AREA WITH CLEAR OVERLAMINATE

Designed for permanent, clean identification of wire and cable, labels are available for a variety of desktop printer types.

3 materials: 1) Vinyl for indoor applications; 2) TEDLAR\* for high temperature and outdoor applications; 3) Polyester for indoor and outdoor applications.

Stock Number	Type	Printer Type	Label Size W x L	Print-On Area W x L	Material	Labels per Pkg.
	TTSL8VC3-10	Thermal Transfer	0.50" x 0.75"	0.50" x 0.41"	Vinyl	10,000
	TTSL1VC3-10		0.50" x 1.50"	0.50" x 0.50"	Vinyl	10,000
	TTSL250VC3-2.5		1.00" x 0.94"	1.00" x 0.38"	Vinyl	2500
	TTSL2VC3-10		1.00" x 1.50"	1.00" x 0.50"	Vinyl	10,000
	TTSL4VC3-5		1.00" x 2.44"	1.00" x 1.00"	Vinyl	5000
	TTSL6VC3-2.5		1.00" x 3.94"	1.00" x 1.00"	Vinyl	2500
	TTSL3VC3-1		2.00" x 1.50"	2.00" x 0.50"	Vinyl	1000
	TTSL7VC3-1		2.00" x 3.94"	2.00" x 1.00"	Vinyl	1000
	JSL1-Y3-5	Ink Jet	0.50" x 0.75"	0.50" x 0.34"	Vinyl	5000
	JSL2-Y3-5		0.50" x 1.50"	0.50" x 0.50"	Vinyl	5000
	JSL9-Y3-2.5		0.70" x 1.33"	0.70" x 0.33"	Vinyl	2500
	JSL5-Y3-2.5		1.00" x 1.33"	1.00" x 0.47"	Vinyl	2500
	JSL11-Y3-1		1.00" x 2.67"	1.00" x 0.67"	Vinyl	1000
	JSL6-Y3-1		1.00" x 3.17"	1.00" x 0.97"	Vinyl	1000
	JSL7-Y3-1		2.00" x 1.50"	2.00" x 0.50"	Vinyl	1000
	JSL8-Y3-1		2.00" x 3.17"	2.00" x 1.00"	Vinyl	1000
	PLL-3-Y3-5	Laser	0.50" x 0.75"	0.50" x 0.34"	Polyester	5000
	PLL-33-Y3-5		0.50" x 1.50"	0.50" x 0.50"	Polyester	5000
	PLL-11-Y3-2.5		1.00" x 1.00"	1.00" x 0.34"	Polyester	2500
	PLL-12-Y3-2.5		1.00" x 1.33"	1.00" x 0.50"	Polyester	2500
	PLL-13-Y3-1		1.00" x 3.17"	1.00" x 0.97"	Polyester	1000
	PLL-21-Y3-1		2.00" x 3.17"	2.00" x 1.00"	Polyester	1000
84F1757	PDL-1	Dot-Matrix	0.50" x 1.44"	0.50" x 0.50"	Vinyl	5000
50F2902	PDL-8		0.80" x 1.44"	0.80" x 0.50"	Vinyl	5000
84F1763	PDL-251		1.00" x 0.94"	1.00" x 0.38"	Vinyl	5000
84F1783	PDL-54		1.00" x 1.38"	1.00" x 0.50"	TEDLAR*	5000
84F1764	PDL-2		1.00" x 1.44"	1.00" x 0.50"	Vinyl	5000
84F1784	PDL-56		1.00" x 2.44"	1.00" x 0.75"	TEDLAR*	1000
84F1774	PDL-4		1.00" x 2.44"	1.00" x 0.75"	Vinyl	1000
	PDL-58		1.00" x 3.87"	1.00" x 1.00"	TEDLAR*	1000
84F1775	PDL-6		1.00" x 3.94"	1.00" x 1.00"	Vinyl	1000
	PDL-95		1.00" x 5.94"	1.00" x 1.50"	TEDLAR*	1000
98F299	PDL-3		2.00" x 1.44"	2.00" x 0.50"	Vinyl	5000
84F1779	PDL-5		2.00" x 2.44"	2.00" x 0.75"	Vinyl	1000
84F1780	PDL-7		2.00" x 3.94"	2.00" x 1.00"	Vinyl	1000
84F1781	PDL-17		2.00" x 7.44"	2.00" x 1.50"	Vinyl	1000

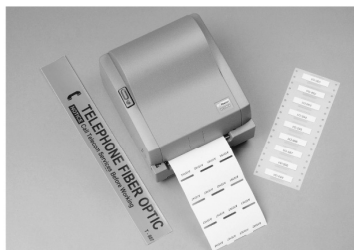
\*Tedlar is a registered trademark of E.I. DuPont Co.

# 22

# WIRES CABLES & ACC

## PTR2 PRINTER AND LABELS

### DURA-MARK™ PTR2 THERMAL TRANSFER DESKTOP PRINTER



Create a variety of high quality, custom labels with the PTR2 thermal transfer desktop printer. Produce self-laminating wire markers, heat shrink markers, component labels and continuous tape. Prints legends up to 3.5" high. Includes printer, AC power cord and manual. Works with most standard PC's and label printing software including type PAN-MARK™ for WINDOWS\*

#### PRINTER AND ACCESSORIES

Type	Description
PTR2	Printer
PTR2-RS	External Label Roll Stand to rear feed labels that are not supplied on 1" cores

#### RIBBONS

Type	Material	Size	Use	Color
TTRW-BL	Wax	4.33" x 280'	Self-Laminating Labels, Heat Shrink Labels and Paper Labels	Black
TTRW2-BL	Wax	2.50" x 280'		Black
TTR-BL	Resin	4.33" x 280'		Black
TTR2-BL	Resin	2.50" x 280'	Vinyl and Polyester Applications	Black
TTR-WH	Resin	4.33" x 262'		White
TTR2-WH	Resin	2.50" x 262'		White

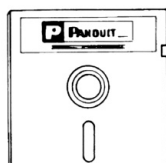
#### SELF-LAMINATING WIRE MARKERS

Designed for permanent, clean identification of wire and cable, labels are available for a variety of desktop printer types. Labels are mounted on 1" cores. 2 materials: 1) Vinyl for indoor applications; 2) TEDLAR\* for high temperature and outdoor applications

Stock No.	Type	Label Size W x L	Print-On Area W x L	Material	Labels per Roll
	TTSL-1	0.50" x 1.50"	0.50" x 0.50"	Vinyl	5000
	TTSL-54	1.00" x 1.50"	1.00" x 0.50"	TEDLAR*	2500
	TTSL-2	1.00" x 1.50"	1.00" x 0.50"	Vinyl	2500
	TTSL-56	1.00" x 2.44"	1.00" x 1.00"	TEDLAR*	1500
	TTSL-4	1.00" x 2.44"	1.00" x 1.00"	Vinyl	1500
	TTSL-58	1.00" x 3.94"	1.00" x 1.00"	TEDLAR*	1000
	TTSL-6	1.00" x 3.94"	1.00" x 1.00"	Vinyl	1000
	TTSL-3	2.00" x 1.50"	2.00" x 0.50"	Vinyl	1000
	TTSL-5	2.00" x 2.44"	2.00" x 1.00"	Vinyl	500
	TTSL-7	2.00" x 3.94"	2.00" x 1.00"	Vinyl	500

\*Tedlar is a registered trademark of E.I. DuPont Co

#### PAN-MARK™ SOFTWARE FOR COMPUTER PRINTABLE PRODUCTS



Label design software for use with IBM compatible computers and printers. Use to create word and/or number labels, serialized and/or bar code labels. Available 5.25 and 3.5 diskettes.

#### PDL-PROG-LT

PAN-MARK LT™ Labeling Software. Software is ideal for anyone desiring a labeling system but is concerned with cost. Used with dot-matrix and laser printers

#### PROG-WIN

PAN-MARK for Windows. Creates labels quickly in Windows. Supports windows and true type fonts. Lets you select directories to save files and has on-line help.

## Labeling Solution Products

### Pan-Quik™ LS3E Hand-Held Dot-Matrix Printer

**Fast — Affordable — Versatile — Easy to Use**

- 20 Kb File Storage Memory saves time when producing frequently used labels
- Flexibility to print self-laminating wire markers, heat shrink markers, component labels, quality labels and more
- Fast drying self-laminating labels reduce installation time
- Easy formatting options reduce set-up time
- Exact label registration
- Automatic recall of last legend entered
- Automatic serialization and legend repeat functions
- Quick change battery pack and optional AC adapter for reduced downtime
- More than 25 font styles and sizes
- Dimensions: 4.2" W x 13.2"L x 3.6" H - Weight 2.7 lbs.



#### Printer and Accessories

Part Number	Description	Price
<b>LS3E</b>	Includes Printer, Battery Pack, Battery Charger, Printer Ribbon, Wrist Strap and Operator's Manual	
<b>LS3-RIB</b>	Replacement Printer Ribbon	
<b>LS3E-BP</b>	Replacement Battery Pack	
<b>LS3EC-S</b>	Replacement Battery Charger	
	(Used only to charge LS3E Battery Pack. Cannot be used to power LS3E directly from Power Outlet.)	
<b>LS3E-MAN-A</b>	Replacement Operator's Manual	
<b>LS3EACS</b>	1 each: Universal AC Adapter, Battery Charging Pack and Power Cord (Power LS3E directly from Power Outlet and charge LS3E Battery Pack at the same time)	
<b>LS3EAK-S</b>	1 each: Universal AC Adapter and Power Cord (Power LS3E directly from Power Outlet)	
<b>LS3-CASE</b>	Carrying Case	

**Labels for the LS3E are available!  
Call for more information!**

### Universal Circuit Breaker Lockout

- Accommodates breaker handles with 0.30" - 0.60" high and 0.25" - 0.44" thick switches
- Compact, universal design fits wide range of single, double and triple handle circuit breakers
- Easily attached with no modifications to panel or circuit breaker
- Does not require hole in circuit breaker handle



Part Number	Description
<b>PSL-CB</b>	Universal Circuit Breaker Lockout

### Multiple Lockout Device

Only one device needed to perform a variety of lockout functions. Rugged stainless/nylon construction offers great durability, strength, added security and corrosion resistance. Compact and easy to install. One 6 ft. vinyl coated galvanized steel cable with loop hole free with every lockout. Accepts Panduit PSL-3, PSL-5, and PSL-11 Lock Series.



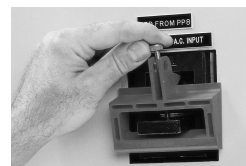
#### Features

- Lockout all sizes of gate valves
- Lockout single or multiple disconnects at the same time
- Immobilize large and cumbersome devices
- Use as a hasp (six padlocks maximum)

Part Number	Description
<b>PSL-MLD</b>	Combination lockout; use as a gate valve, disconnect switch lockout or multi-lock adapter
<b>PSL-MLDC</b>	Six foot vinyl coated galvanized steel cable with loop hole; combine several cables to extend cable length
<b>PSL-MLDC200</b>	200 ft. vinyl coated galvanized steel cable on roll, no loop hole
<b>PSL-MLDH-X</b>	PSL-MLD Lockout Hasps without cable

### Large Circuit Breaker Lockout

Circuit breaker lockout designed for three-phase circuit breakers 277V and above. Rugged stainless steel/nylon construction offers great strength, durability, added security and corrosion resistance.



#### Features

- Accommodates breaker handle dimensions up to 0.8" thick x 3.0" wide
- Secures and prevents re-engaging of the breaker handle
- Easy installation - no installation tools required

Part Number	Description
<b>PSL-CBL</b>	Large Circuit Breaker Lockout

### Electrician's Lockout Kit

The easiest way for the individual electrician to lockout a variety of electrical sources. Includes padlock, multiple lockout device, wall switch lockout, circuit breaker lockout, plug lockout, screwdriver, pouch and 5 lockout tags. Other kits also available. Call for details!



Part Number	Description
<b>PSL-PK-EA</b>	Electrician's Lockout Kit

# 22

W  
I  
R  
E  
S  
  
L  
I  
N  
E  
  
C  
O  
R  
D  
S  
&  
A  
C  
C