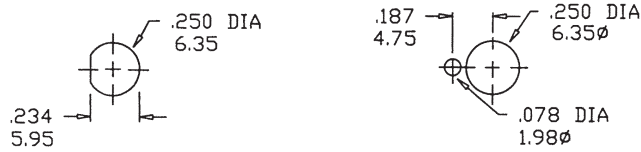
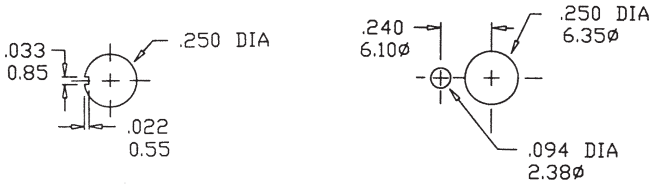
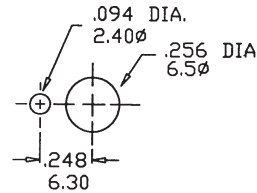
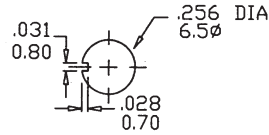


PANEL MOUNTING

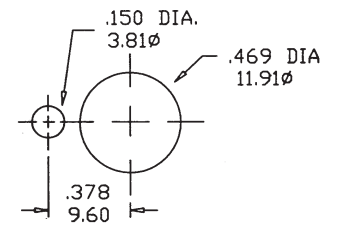
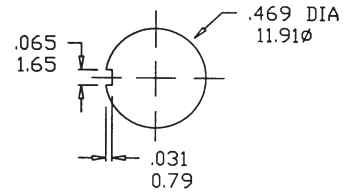
1/4 IN. BUSHING



METRIC BUSHING

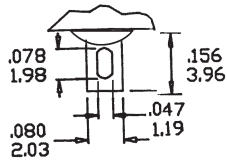


15/32 IN. BUSHING

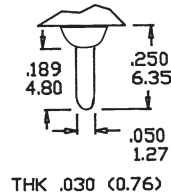


TERMINATION OPTIONS

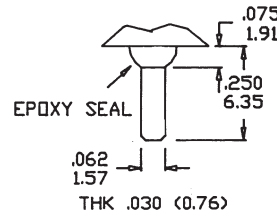
M1 SOLDER LUG



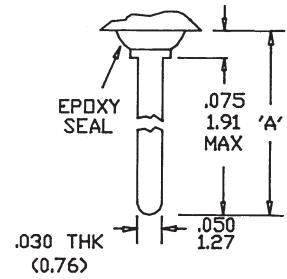
M2 P.C. MOUNT



M3 QUICK CONNECT



M5 WIRE WRAP



OTHER TERMINATION OPTIONS

- M6 RIGHT ANGLE P.C. MOUNT
- M7 RIGHT ANGLE P.C. MOUNT
- VS2 VERTICAL BRACKET P.C. MOUNT
- VS3 VERTICAL BRACKET P.C. MOUNT
- VS5 VERTICAL BRACKET P.C. MOUNT

Mating Quick Connector
Amp P/N 61454-1

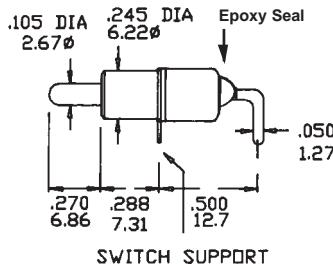
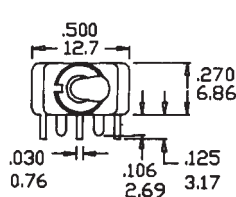
OPTION CODE	DIM. 'A'
M5-1	.750 (19.05)
M5-2	.964 (24.48)
M5-3	.425 (10.80)
M5-4	1.062 (26.97)

TERMINATION OPTIONS M6, M7, VS2, VS3, VS5

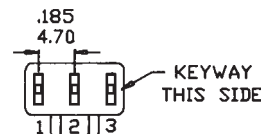
M6



SPDT

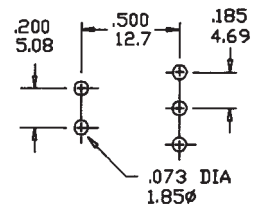


SWITCH SUPPORT



TERM. NOS. FOR REFERENCE ONLY

P.C. MOUNTING



SPECIFICATIONS SUBJECT TO CHANGE WITHOUT NOTICE.