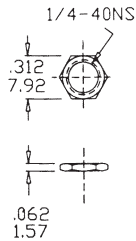


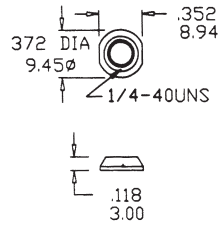
HARDWARE

1/4 NUTS HDW2

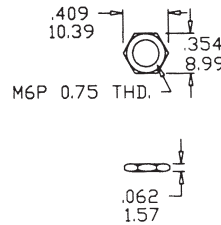


Supplied standard with B1, B3, B5, B6 and B9 options

DRESS NUT HDW3

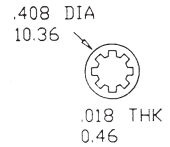


METRIC NUT HDW6



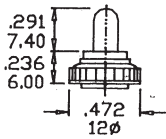
Supplied standard with B8 metric bushing

LOCK WASHER HDW11



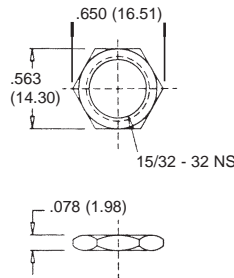
Supplied standard with B3/B4 bushing

OPTIONAL RUBBER HOOD SEALING



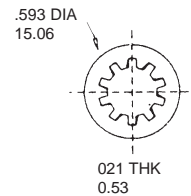
K1= Metric
E1= Inch (Std.)
for actuator T1, T2 and B1, B3, B5, B6
Bushing Only

15/32 NUTS HDW4



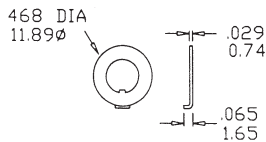
Supplied standard with B13 bushing

LOCK WASHER HDW12



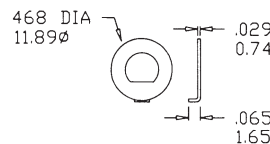
Supplied standard with B13 bushing

HDW 15



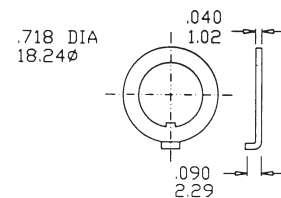
Locking ring
Supplied standard

HDW 16



Locking ring
supplied with B5 bushing

HDW 17



Locking ring
Supplied with B13 bushing