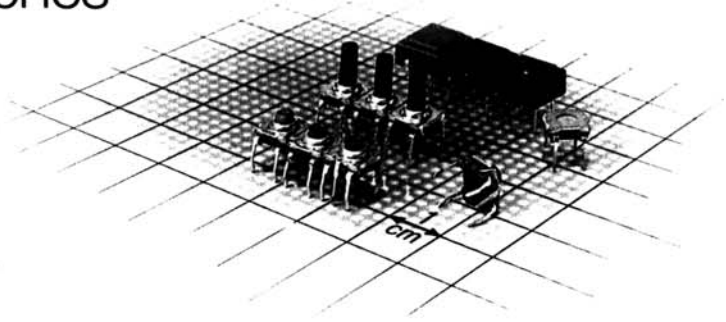


KSA and KSF Tact Switches



KSA (1 Million operations)

(Green actuator)

In this version, a special bronze click washer is used. The KSA 1 Million operations is particularly adapted for long operating life requirements such as telephone, data processing, and so on.

KSA high temperature

(Red actuator)

The KSA high temperature has been designed for use under wide temperature changes (-40°C to +125°C) or very severe climatic conditions. In this version contacts are gold plated and the operating life is 1 million operations.

Applications: heating control systems, household appliances, microwave ovens, automotive.

KSA high sealed version

This totally sealed version withstands soldering process with organic flux, washing and thermal shock, see diagram EIA - RS-448.

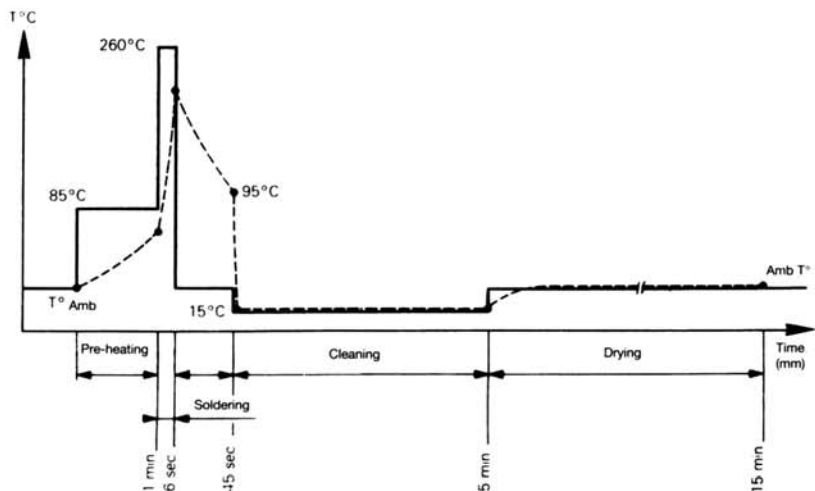
KSF

Flat miniature tact switch, single pole, single throw, normally open versions, of the KS family, designed for automatic or manual insertion.

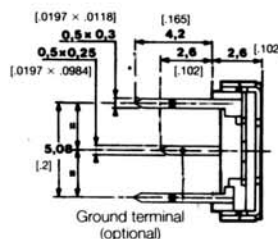
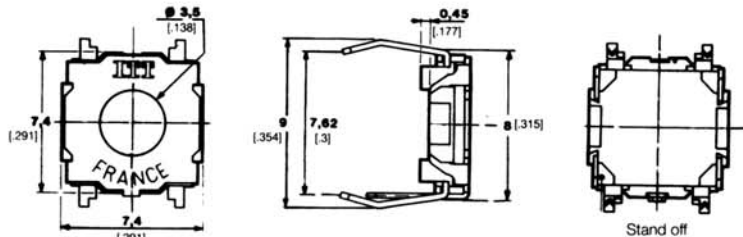
Main features:

- Operating force 1.6 or 3 or 5N [160 or 300 or 500 grams] ± 25%. For gold version, operating force must be increased by 0.3N [30 grams]
- Positive tactile feedback
- Travel 0.3 mm [.0118 inch] $^{+0.1}_{-0}$
- 5.08 × 7.62 mm [.200 × .300 inch] footprint
- Thickness 2.6 mm [.102 inch]
- Available with cambered terminals to ensure self-retention on the printed circuit board in manual insertion, or with straight terminals for use in automatic insertion machines
- Minimum center to center spacing of 7.62 × 10.16 mm [.300 × .400 inch]
- Sealed against flux soldering
- Can be delivered either in tubes of 65 pieces for automatic insertion, or in boxes of 500 pieces for manual insertion
- Optional: ground terminal
- Snap-in square button 10 × 10 mm [.394 × .394 inch], height 5.6 mm [.220 inch] above PC board.

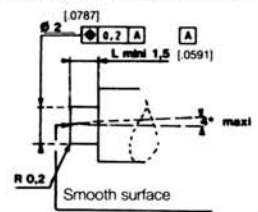
Solder test EIA - RS-448



Dimensional Drawings KSF · Dimensions in mm [inch]



Recommended shape of the actuator



Material: polyamid or similar

Note: Identification

- The 5rd and 6th digits of the ordering codes are stamped on the metallic top plate.
- The other characteristics of the ordering codes can actually be seen on the product.

Example:

4 = 3 Newtons force,
100 K, operations
1 = temperature
- 40° + 90° C

