

Enclosed Switches Compact

E6/V6 Series

2
SWITCHES & KNOBS



Flange mount
with seal boot

GENERAL INFORMATION

Type E6 and V6 switches contain a precision snap-action basic switch inside a rugged cast zinc housing. Lead washers are used to seal the mounting holes on side mount switches.

Removal of the bottom enclosure exposes the terminals for easy wiring. The seal boot is removed when replacing SPDT switching units.

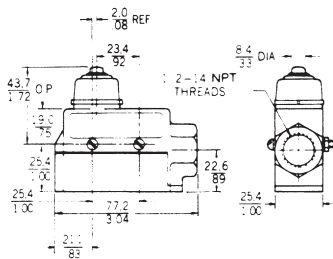
FEATURES

- Side or flange mount
- Momentary or maintained contact
- Sealed or unsealed actuators
- Temperature range -25°F to +160°F (-32° to +71°C)
- UL Recognized, File # E12252
- CSA Certified, File # LR41372

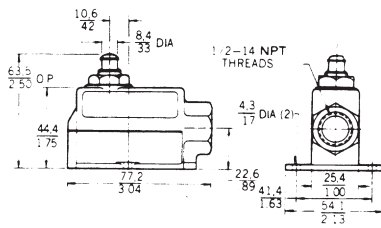
TYPICAL DIMENSIONS

(For reference only)

Side mount with seal boot



Flange mount without seal boot



PLUNGER ACTUATED SWITCH ORDER GUIDE

Description	Electrical Data and UL Codes	Mtg.	Catalog Listing	O.P. mm inches	O.F. N oz.	P.T. max. mm in.	O.T. min. mm in.	D.T. max. mm in.
With seal boot. SPDT	15A L74	Side	BZE6-2RN	43,66 ± 0,76 1.1719 ± .030	2,50-6,67 9-24	1,98 .078	5,56 .219	0,05 .002
		Flange	BZV6-2RN	69,09 ± 1,52 2.720 ± .060				
With seal boot. DPDT	10A L59	Side	DTE6-2RN	46 ± 0,76 1.812 ± .030	7,23-16,4 26-59	2,80 .110	3,17 .125	1,53 .060
Without seal boot. SPDT	15A L74	Side	BZE6-2RQ	38,1 ± 0,76 1.500 ± .030	2,50-3,62 9-13	0,38 .015	5,56 .219	0,05 .002
		Flange	BZV6-2RQ	63,5 ± 1,14 2.500 ± .045				
With seal boot. Roller parallel to long axis of switch. SPDT.	15A L74	Side	BZE6-2RN80	56,7 ± 1,14 2.232 ± .045	2,50-6,68 9-24	1,98 .078	5,55 .219	0,05 .002
Without seal boot. Roller parallel to long axis of switch. SPDT.	15A L74	Side	BZE6-2RQ8	49,6 ± 1,14 1.953 ± .045	2,50-3,62 9-13	0,38 .015	3,55 .140	0,05 .002
		Flange	BZV6-2RQ8	75 ± 1,52 2.953 ± .060				
Without seal boot. Roller perpendicular to long axis of switch. SPDT.	15A L74	Side	BZE6-2RQ81	49,6 ± 1,14 1.953 ± .045	2,50-3,62 9-13	0,38 .015	3,55 .140	0,05 .002

The Best Products, Competitive Prices and a Helpful Staff:

Our Promise to You.