

Enclosed Switches Miniature Pre-Wired

914CE Series



GENERAL INFORMATION

914CE switches satisfy the need for miniature enclosed switches with environmental sealing. Factory prewired cable enables use in limited access areas. Cable is type SJTO. Wire ends are stripped and tinned. Basic switch is not replaceable.

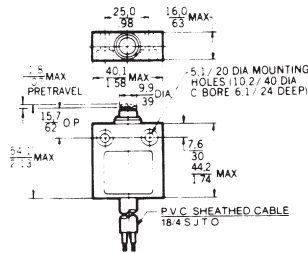
A full range of actuators is available, including plain plungers, roller plungers, side rotary, multi-directional wire, and manual. Any of the LS or HDLS limit switch levers may be used with the side rotary 914CE16. Gold contacts and side exit cable are available.

FEATURES

- Miniature size
- Sealed construction
- Wide selection of actuators
- Precision characteristics
- Simple two-screw mounting (#10 screws)
- Cast zinc housing
- Optional mounting bracket
- Temperature range 35° to +160°F (2° to +71°C), for NEMA 1 to 3 only versions, all others 10° to +200°F (-12° to +93°C)
- All listings comply to NEMA 1 and 3 plus IP65; many to NEMA 4, 6, 6P, 12, and 13 and IP67 as well (see order guides)
- UL Recognized, File # E41859
- CSA certified, File # LR15775

TYPICAL DIMENSIONS (For reference only)

Plunger



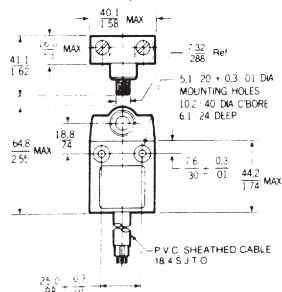
PLUNGER ACTUATED SWITCHES ORDER GUIDE

Description	Catalog Listing*	NEMA	Elec. Rating	O.F. max. N lbs.	P.T. max. mm in.	O.T. min. mm in.	D.T. max. mm in.
Plunger	914CE1-3	1,3	5A	12,2 2.75	1,8 .071	3,0 .118	0,1 .004
Boot sealed plunger	914CE18-3	1,3,6,6P, 4,12,13	5A	22,3 5	1,8 .071	3,0 .118	0,1 .004

ROLLER PLUNGER SWITCHES ORDER GUIDE

Description**	Catalog Listing*	NEMA	Elec. Rating	O.F. max. N lbs.	P.T. max. mm in.	O.T. min. mm in.	D.T. max. mm in.
Roller plunger	914CE2-3	1,3	5A	12,2 2.75	1,8 .071	3,0 .118	0,1 .004
	914CE2-3K	1,3,6,6P, 4,12,13	5A	22,3 5	1,8 .071	3,0 .118	0,1 .004
Cross roller plunger	914CE3-3	1,3	5A	12,3 2.75	1,8 .071	3,0 .118	0,1 .004

Side Rotary*



* Any LS or HDLS limit switch lever can be used with this switch.

SIDE ROTARY AND WOBBLE ACTUATED SWITCHES ORDER GUIDE

Description	Catalog Listing*	NEMA	Elec. Rating	O.F. max.	P.T. max.	O.T. max.	D.T. max.
Side rotary (Lever not included)	914CE16-3 ***	1,3,6,6P, 4,12,13	5A	0,34 Nm 3 in. lbs.	30°	40°	3°
Multidirectional spring wire wobble actuator	914CE20-3	1,3,6,6P, 4,12,13	5A	0,56 N 2 oz.	—	—	—

N × Newtons

* These listings have 0,91m (3 ft.) cable. To order 1,83 (6 ft.) cable, change the -3 to -6.

** Snap release not recommended on these devices.

*** Switch operates on clockwise and counterclockwise rotation of the lever shaft.