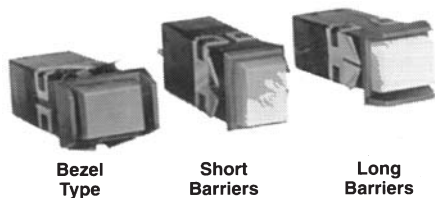


SERIES 4 LIGHTED PUSHBUTTON SWITCHES AND INDICATORS



CONTACT US FOR CATALOG INFORMATION AND PRICES ON SERIES 4 SWITCHES

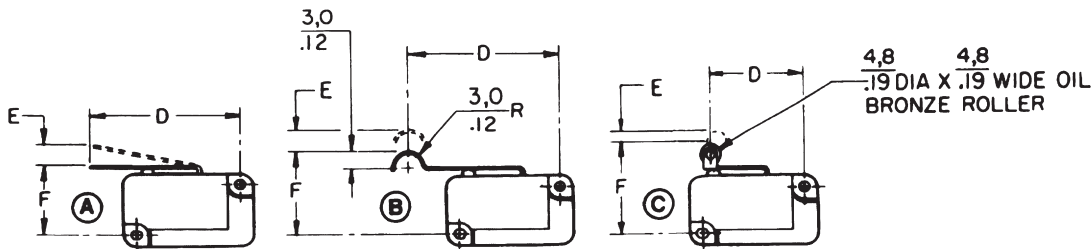
- **INSTALLATION**
Snap-in mounting for panels up to .200" thick. Standard price includes assembled product, with lamp, read to install in your panels. Front of panel mounting and relamping.
- **WIRING**
Lead wires are readily attached to .110" QC terminals. Lamp and switch terminals are on same level.
- **PRECISION SWITCHING RELIABILITY**
Long life dependability assured by time-proven SM basic switches. Choice of momentary or alternate action, 1 or 2 basic switches. UL Listed low energy (1 amp, 125 VAC) and power load (5 and 10 amp, 250 VAC) versions.
- **LIGHTED DISPLAY COLORS**
Transmitted color, projected color, and hidden legend/hidden color options.
- **PANEL ARRANGEMENT**
Choice of bezel or barrier style housings, which may be mounted individually or in vertical and horizontal strips.
- **MATCHING INDICATORS**
Indicators feature the same buttons and housing styles as the pushbutton switches.

XL SERIES SOLID STATE SWITCH



- Hall effect sensor; operated by magnet in plunger
- 3-pin, solder/quick-connect terminals
- Single output; digital current sinking, Normally High or Normally Low
- Low operating force; as little as 0.15 oz. with lever
- A variety of actuator versions; uses all standard Micro Switch V3 levers
- Same mounting centers as V3 snap-action switch
- 4.5 to 5.5 or 6 to 16 VDC supply voltages

XL Series mechanically-operated hall effect switches combine mechanical switch operation and mounting convenience with solid state reliability. Mounting dimensions and mechanical characteristics are similar to the popular V3 snap-action switch. Over 500 actuators are available, including pin plunger, straight lever, roller lever and simulated roller lever. The output transistors of the units listed are "normally off"; they are not conducting when the plunger is in free position. For "normally on" devices, substitute 32 for 31 (immediately following XL) in the Micro Switch number, e.g., 37XL32XA-12.



| Mfr. No. | Lever Style§ | "E" Max. Pre-travel (In.) | "F" Operating Point (In.) | Min. Over-travel (In.) | Operating Force (oz.)# |
|---------------------------|--------------|---------------------------|---------------------------|------------------------|------------------------|
| 5 VDC TYPE SINKING | | | | | |
| 37XL31-01 | None | .060 | .570 | .034 | .35 |
| 37XL31-02 | None | .060 | .570 | .034 | 1.25 |
| 37XL31-03 | None | .060 | .570 | .034 | 3.00 |
| 37XL31XA-11 | A | .075 | .610 | .035 | .40 |
| 37XL31XA-12 | A | .075 | .610 | .035 | 1.40 |
| 37XL31XA-13 | A | .075 | .610 | .035 | 3.20 |
| 37XL31XA-21 | A | .150 | .615 | .075 | .20* |
| 37XL31XA-22 | A | .150 | .615 | .075 | .70 |
| 37XL31XA-23 | A | .150 | .615 | .075 | 1.40 |
| 37XL31XA-31 | A | .280 | .617 | .140 | .10* |
| 37XL31XA-32 | A | .280 | .617 | .140 | .35 |
| 37XL31XA-33 | A | .280 | .617 | .140 | .70 |
| 37XL31XB-11 | B | .155 | .737 | .065 | .20* |
| 37XL31XB-12 | B | .155 | .737 | .065 | .70 |
| 37XL31XB-13 | B | .155 | .737 | .065 | 1.40 |
| 37XL31XC-01 | C | .075 | .820 | .034 | .40 |
| 37XL31XC-02 | C | .075 | .820 | .034 | 1.40 |
| 37XL31XC-03 | C | .075 | .820 | .034 | 3.20 |

| Mfr. No. | Lever Style§ | "E" Max. Pre-travel (In.) | "F" Operating Point (In.) | Min. Over-travel (In.) | Operating Force (oz.)# |
|------------------------------|--------------|---------------------------|---------------------------|------------------------|------------------------|
| 6-16 VDC TYPE SINKING | | | | | |
| 47XL31-01 | None | .060 | .570 | .034 | .35 |
| 47XL31-02 | None | .060 | .570 | .034 | 1.25 |
| 47XL31-03 | None | .060 | .570 | .034 | 3.00 |
| 47XL31XA-11 | A | .075 | .610 | .035 | .40 |
| 47XL31XA-12 | A | .075 | .610 | .035 | 1.40 |
| 47XL31XA-13 | A | .075 | .610 | .035 | 3.20 |
| 47XL31XA-21 | A | .150 | .615 | .075 | .20* |
| 47XL31XA-22 | A | .150 | .615 | .075 | .70 |
| 47XL31XA-23 | A | .150 | .615 | .075 | 1.40 |
| 47XL31XA-31 | A | .280 | .617 | .140 | .10* |
| 47XL31XA-32 | A | .280 | .617 | .140 | .35 |
| 47XL31XA-33 | A | .280 | .617 | .140 | .70 |
| 47XL31XB-11 | B | .155 | .737 | .065 | .20* |
| 47XL31XB-12 | B | .155 | .737 | .065 | .70 |
| 47XL31XB-13 | B | .155 | .737 | .065 | 1.40 |
| 47XL31XC-01 | C | .075 | .820 | .034 | .40 |
| 47XL31XC-02 | C | .075 | .820 | .034 | 1.40 |
| 47XL31XC-03 | C | .075 | .820 | .034 | 3.20 |

§Other lever styles available on request. #Nominal values; tolerances available on request. *Lever may not be self-returning.