

SPECIFICATIONS

SERIES TB6- .375" TRI-BARRIER

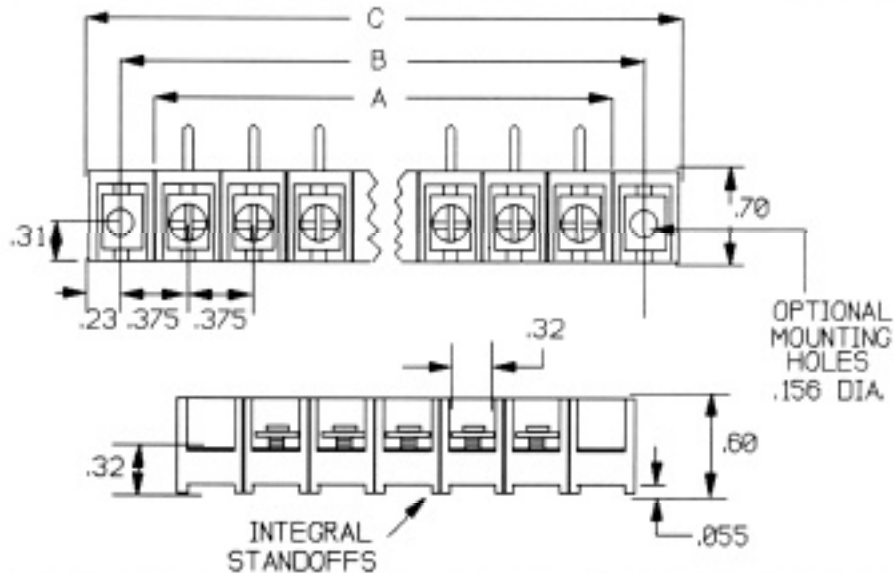
4

TERMINAL CENTERS	.375"
ELECTRICAL RATING	300 VOLTS, 20AMPS
INSULATOR MATERIAL	UL 94V0 THERMOPLASTIC
COLOR	BLACK
WIRE RANGE	12-24 AWG
SCREW TYPE	#6-32 STEEL, ZINC PLATED PHIL/SLOT
CONTACT MATERIAL	BRASS
CONTACT PLATING	BRIGHT TIN
UL FILE#	E69812 (M)
CSA FILE#	LR49832



**T
E
R
M
I
N
A
L
B
L
O
C
K
S**

DIMENSIONS



No. of Terminals	A	B	C	No. of Terminals	A	B	C
2	.82	1.19	1.57	17	6.44	6.81	7.19
3	1.19	1.57	1.95	18	6.81	7.19	7.56
4	1.56	1.94	2.32	19	7.19	7.56	7.94
5	1.94	2.32	2.69	20	7.56	7.94	8.31
6	2.31	2.69	3.07	21	7.94	8.31	8.69
7	2.69	3.07	3.44	22	8.31	8.69	9.06
8	3.06	3.44	3.82	23	8.69	9.06	9.44
9	3.44	3.82	4.19	24	9.06	9.44	9.81
10	3.81	4.19	4.57	25	9.44	9.81	10.19
11	4.19	4.57	4.94	26	9.81	10.19	10.56
12	4.56	4.94	5.31	27	10.19	10.56	10.94
13	4.94	5.31	5.69	28	10.56	10.94	11.31
14	5.31	5.69	6.06	29	10.94		
15	5.69	6.06	6.44	30	11.31		
16	6.06	6.44	6.81				