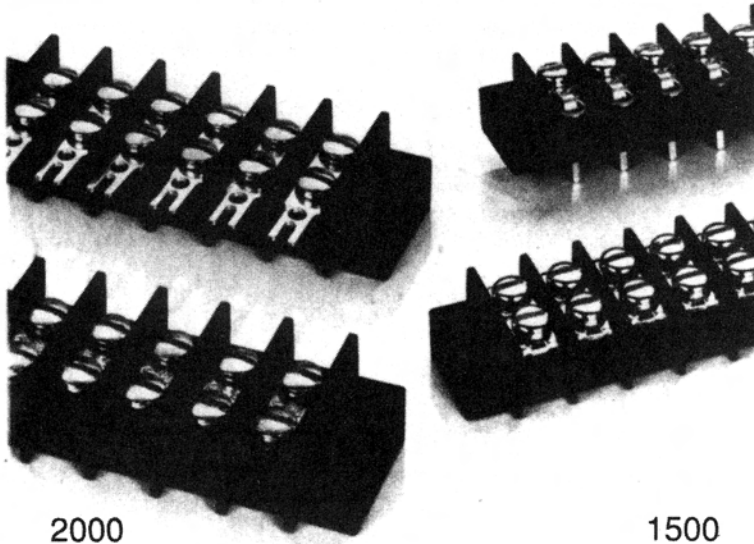


Series 1500/2000

1500 – 3/8" (9.52 mm)
Center-to-Center Spacing



2000

1500

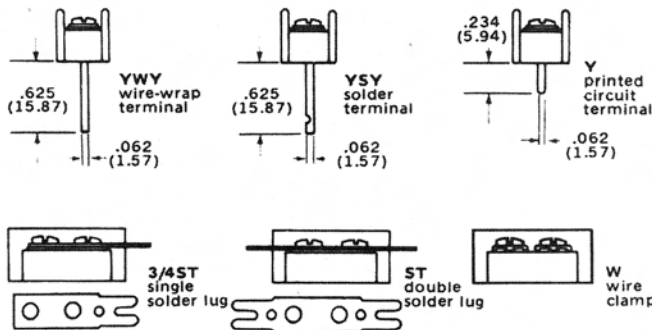
FEATURES

- **FLEXIBLE HI-TEMP THERMOPLASTIC TERMINAL BLOCKS** – Self-extinguishing types which resist breakage and other damage (conform to UL94V-0).
- **TERMINAL FLEXIBILITY** – Ideal for surface mount, sub-panel or chassis connections in electronic/electrical circuit applications. One thru 22 terminals. 1500 Series on 3/8 inch centers, 2000 Series on 7/16 inch center-to-center spacing.
- **ECONOMICAL CLOSED-BACK DESIGN** – No need for costly insulation strip.
- **BROAD WIRE RANGE** – No. 6-32 external twin screws, UL recognized for No. 22 AWG to No. 10AWG. Variations include double solder lug, single solder lug, wire wrap, solder pin and printed circuit pin.
- **UL/CSA ELECTRICAL RATINGS** – UL 30 amps/1100 volts RMS (1/3 breakdown voltage), CSA rating: 15 amps/300 volts (1500 Series), 20 amps/300 volts (2000 Series).
- **RECOGNITION AND LISTING** – Various terminal types are UL recognized and CSA certified.

Recognized under the Components Program of Underwriters Laboratories, Inc. Standard 1059, Guide No. XCFR2, File No. E62557.

Guide No. 184-N-90, Report No. LR39186-1.

VARIATIONS



INTERNAL TERMINAL DESIGNATIONS

- | | |
|---------------|---|
| 1500/2000-Y | printed circuit board design with .062" x .031" solderable tin-plated pin |
| 1500/2000-YSY | feed-thru solder pin |
| 1500/2000-YWY | feed-thru wire wrap |

EXTERNAL TERMINAL DESIGNATIONS

- | | |
|-----------------|---|
| 1500/2000 | screw terminal with No. 6-32 plated steel* screw accepting up to No. 10AWG wire |
| 1500/2000-ST | solderable tin-plated double solder tab |
| 1500/2000-3/4ST | solderable tin-plated single solder tab |
| 1500/2000-W | wire clamp captivated to a No. 6-32 plated steel screw |

*Other materials available –

ACCESSORIES

1500/2000 – May be purchased blank or factory imprinted to customer requirement. To order, specify:
1500 Series –
Part No. 247A10-1 thru 22
2000 Series
Part No. 247A11-1 thru 22



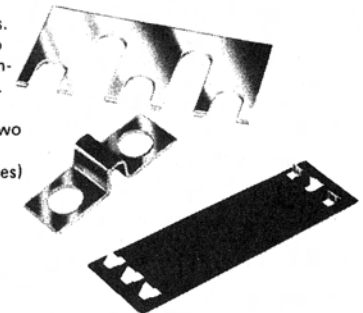
1500 – Jumper is constructed of plated brass. "Rooster comb" design permits connections to two to 10 poles. To order, specify:
Part No. 278-A11 (plus no. of poles)
Example: 278-A11-10
Part No. 68240100 (Holes) or
68245100 (slots) (2-pole jumper for 1500 only)



Part No. 68245100

Part No. 68240100

2000 – Plated brass in two styles. Type 267-A28 is designed to jump two adjacent terminals as it is channelled to cross over the barrier top. "Rooster comb" design of Type 267-A42 permits connections of two to 18 poles. To order, specify:
Part No. 267-A42 (Plus No. of poles)
Example: 267-A42-18



1500/2000 – Wire clamp captivated to No. 6-32 screw eliminates need for lugs. To order, specify:
Part No. 1500 58525
Part No. 2000 58526



1500/2000 – Rigid .030" thick self-extinguishing vinyl. Complete with spring clips for attaching to mounting positions. To order, specify:

- 1500 Series –
Part No. 247B24-1 thru 22 terminals
- 2000 Series –
Part No. 247B25-1 thru 22 terminals