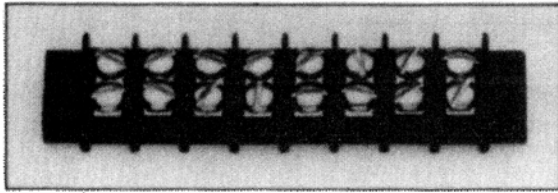


SERIES 3000

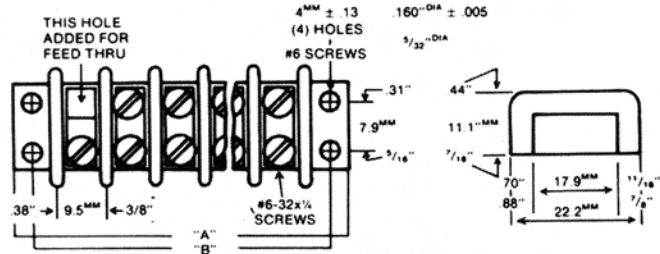


UL Recognized
 UL File No. E82890
 CSA #LR57186-1
 CSA Approved

SPECS.	
CONSTRUCTION	CLOSED BACK OR FEED THRU
TERMINAL CENTERS	3/8" (9.5mm)
CURRENT RATING, AMPS (UL)	20
VOLTAGE RATING, rms	
(A) UL RECOGNIZED	
1. GENERAL INDUSTRIAL	150-300
2. COMMERCIAL EQUIP.	250
(B) WITHSTAND AND VOLTS, rms	7500
MATERIAL	(THERMOPLASTIC) (COLOR BLACK)
WIRE SIZE RECOMMENDED	14-22 AWG SOLID/STRANDED
SCREWS	5/32 x 1/4 BINDING HEAD STEEL NICKEL PLATED
# OF TERMINALS	1-30
	(UL FLAME RETARDANT RATING 94V-0)

No. of Terminals	Fraction Dimension		Decimal Dimension		Millimeters Dimension	
	A	B	A	B	A	B
-2	1 11/32	1 1/8	1.41	1.13	35.7	28.6
-3	1 25/32	1 1/4	1.78	1.50	45.2	38.1
-4	2 1/32	1 1/2	2.16	1.88	54.7	47.6
-5	2 17/32	2 1/4	2.53	2.25	64.3	57.2
-6	2 29/32	2 3/4	2.91	2.63	73.8	66.7
-7	3 1/32	3	3.28	3.00	83.3	76.2
-8	3 21/32	3 1/2	3.66	3.38	92.8	85.7
-9	4 1/32	3 3/4	4.03	3.75	102.4	95.3
-10	4 13/32	4 1/4	4.41	4.13	111.9	104.8
-11	4 25/32	4 1/2	4.78	4.50	121.4	114.3
-12	5 1/32	4 3/4	5.16	4.88	130.9	123.8
-13	5 17/32	5 1/4	5.53	5.25	140.5	133.4
-14	5 29/32	5 3/4	5.91	5.63	150	142.9
-15	6 1/32	6	6.28	6.00	159.5	152.4
-16	6 21/32	6 1/2	6.66	6.38	169	161.9
-17	7 1/32	6 3/4	7.03	6.75	178.5	171.5
-18	7 13/32	7 1/4	7.41	7.13	188	181
-19	7 25/32	7 1/2	7.78	7.50	197.6	190.1
-20	8 1/32	7 3/4	8.16	7.88	207.1	200
-21	8 17/32	8 1/4	8.53	8.25	216.7	209.6
-22	8 29/32	8 1/2	8.91	8.63	226.2	219.1
-23	9 1/32	9	9.28	9.00	235.7	228.6
-24	9 13/32	9 1/4	9.66	9.38	245.2	238.1
-25	10 1/32	9 3/4	10.03	9.75	254.8	247.7
-26	10 17/32	10 1/4	10.41	10.13	264.3	257.2
-27	10 29/32	10 1/2	10.78	10.50	273.8	266.7
-28	11 1/32	10 3/4	11.16	10.88	283.3	276.2
-29	11 13/32	11 1/4	11.53	11.25	292.9	285.8
-30	11 25/32	11 1/2	11.91	11.63	302.4	295.3

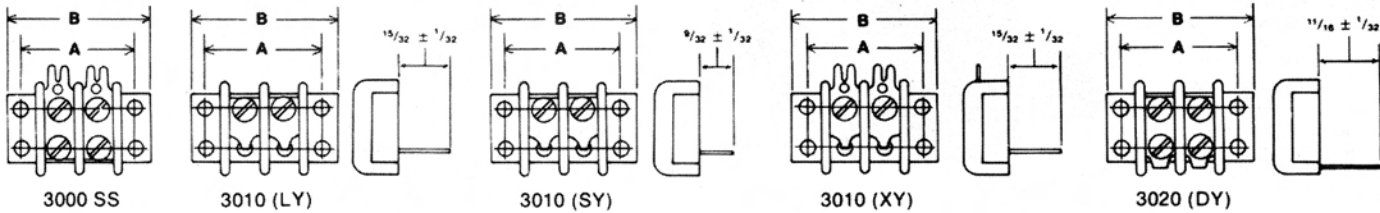
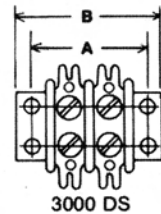
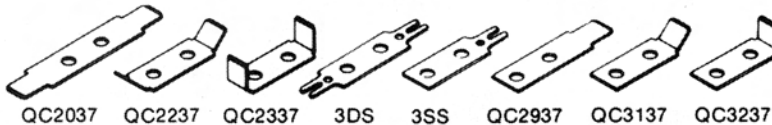
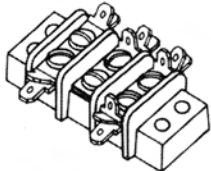
TOP HARDWARE OPTIONAL OUR QC SERIES
 TERMINAL BLOCKS ALSO AVAILABLE WITHOUT MOUNTING ENDS.
 NOTE: OUR TERMINALS ARE ULTRASONICALLY WELDED IN THE BLOCK
 FOR IMPROVED PULL OUT STRENGTH.
 ALSO AVAILABLE 5/32 x 1/4 BINDING HEAD
 BRASS NICKEL PLATED



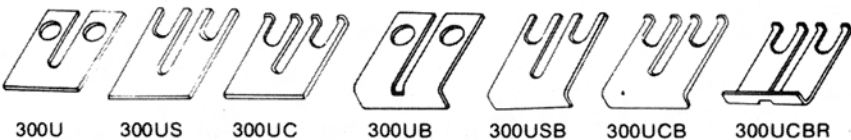
TERMINAL BLOCK HARDWARE

QUICK CONNECT TABS

MARCO'S QC SERIES TERMINAL BOARD TABS DOUBLE ROW



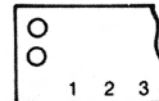
JUMPERS 3/8 CENTERS



OVER-THE-BARRIER-JUMPERS



MARKER STRIP



MARCO'S TERMINAL BLOCK HARDWARE CAN BE PURCHASED SEPARATELY OR ASSEMBLED ON THE TERMINAL BLOCK.

4 TERMINAL BLOCKS