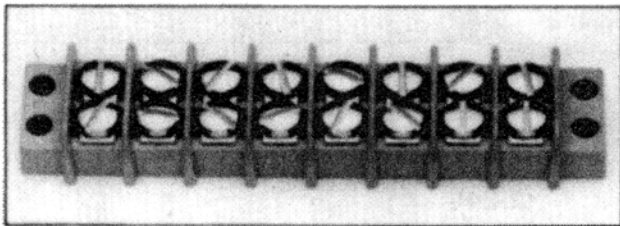


## NEW MIL-T-55164/1D

### MILITARY CLASS 37TB TERMINAL BLOCKS

THIS MATERIAL CAN ALSO BE SUBSTITUTED FOR THE CFG, MFE, MDG, GMF, GDI-30, & GDI-30F ALL OF THE MILITARY SPECIFICATION MIL-M-14



**MOLDED MATERIAL**

TYPE: GPT-30F PER MIL-M-24519 COLOR: GRAY  
SCREWS: 6/32 x 1/4 BRASS NICKEL PLATED B.H.  
EYELETT: BRASS, NICKEL PLATED

**ELECTRICAL RATING:**

RATED VOLTAGE 300 VOLTS (MAXIMUM)  
CURRENT RATING: 20 AMPS  
DIELECTRIC WITHSTANDING VOLTAGE: 3000 VOLTS RMS

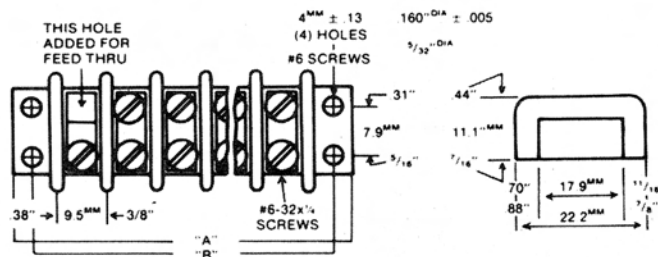
**# OF TERMINALS**

TOP HARDWARE OPTIONAL OUR QC SERIES  
CONSTRUCTION CLOSED BACK OR FEED THRU  
TERMINAL CENTERS 3/16" (9.5mm)

1-30

TOP HARDWARE OPTIONAL OUR QC SERIES  
TERMINAL BLOCKS ALSO AVAILABLE WITHOUT MOUNTING ENDS.  
NOTE: OUR TERMINALS ARE ULTRASONICALLY WELDED IN THE BLOCK FOR IMPROVED PULL OUT STRENGTH.

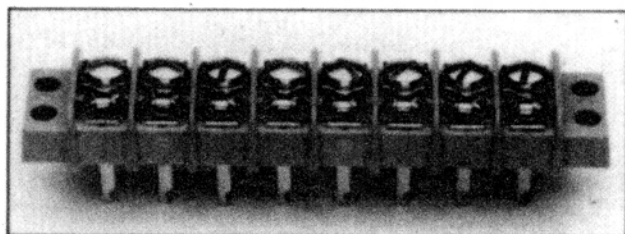
No. of Terminals	Fraction Dimension		Decimal Dimension		Millimeters Dimension	
	A	B	A	B	A	B
-2	1 13/32	1 1/4	1.41	1.13	35.7	28.6
-3	1 29/32	1 1/2	1.78	1.50	45.2	38.1
-4	2 1/32	1 7/8	2.16	1.88	54.7	47.6
-5	2 17/32	2 1/4	2.53	2.25	64.3	57.2
-6	2 29/32	2 5/8	2.91	2.63	73.8	66.7
-7	3 1/32	3	3.28	3.00	83.3	76.2
-8	3 17/32	3 3/8	3.66	3.38	92.8	85.7
-9	4 1/32	3 7/8	4.03	3.75	102.4	95.3
-10	4 17/32	4 1/4	4.41	4.13	111.9	104.8
-11	4 29/32	4 5/8	4.78	4.50	121.4	114.3
-12	5 1/32	4 7/8	5.16	4.88	130.9	123.8
-13	5 17/32	5 1/4	5.53	5.25	140.5	133.4
-14	5 29/32	5 5/8	5.91	5.63	150	142.9
-15	6 1/32	6	6.28	6.00	159.5	152.4
-16	6 17/32	6 3/8	6.66	6.38	169	161.9
-17	6 29/32	6 7/8	7.03	6.75	178.5	171.5
-18	7 1/32	7 1/4	7.41	7.13	188	181
-19	7 17/32	7 5/8	7.78	7.50	197.6	190.1
-20	7 29/32	7 7/8	8.16	7.88	207.1	200
-21	8 1/32	8 1/4	8.53	8.25	216.7	209.6
-22	8 17/32	8 3/8	8.91	8.63	226.2	219.1
-23	8 29/32	9	9.28	9.00	235.7	228.6
-24	9 1/32	9 1/4	9.66	9.38	245.2	238.1
-25	9 17/32	9 3/8	10.03	9.75	254.8	247.7
-26	9 29/32	10	10.41	10.13	264.3	257.2
-27	10 1/32	10 1/4	10.78	10.50	273.8	266.7
-28	10 17/32	10 3/8	11.16	10.88	283.3	276.2
-29	10 29/32	10 7/8	11.53	11.25	292.9	285.8
-30	11 1/32	11 1/4	11.91	11.63	302.4	295.3



## NEW MIL-T-55164/4D

### MILITARY CLASS 40TB TERMINAL BLOCKS

THIS MATERIAL CAN ALSO BE SUBSTITUTED FOR THE CFG, MFE, MDG, GMF, GDI-30, & GDI-30F ALL OF THE MILITARY SPECIFICATION MIL-M-14



**MOLDED MATERIAL**

TYPE: GPT-30F PER MIL-M-24519 COLOR: GRAY  
SCREWS: 6/32 x 1/4 BRASS NICKEL PLATED B.H.  
EYELETT: BRASS, NICKEL PLATED

**ELECTRICAL RATING:**

RATED VOLTAGE 300 VOLTS (MAXIMUM)  
CURRENT RATING: 20 AMPS  
DIELECTRIC WITHSTANDING VOLTAGE: 3000 VOLTS RMS

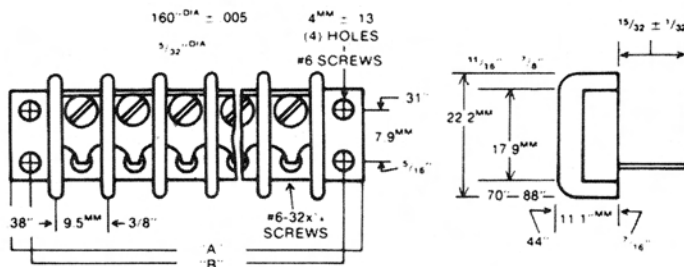
**# OF TERMINALS**

TOP HARDWARE OPTIONAL OUR QC SERIES  
CONSTRUCTION CLOSED BACK OR FEED THRU  
TERMINAL CENTERS 3/16" (9.5mm)

1-30

TOP HARDWARE OPTIONAL OUR QC SERIES  
TERMINAL BLOCKS ALSO AVAILABLE WITHOUT MOUNTING ENDS.  
NOTE: OUR TERMINALS ARE ULTRASONICALLY WELDED IN THE BLOCK FOR IMPROVED PULL OUT STRENGTH.

No. of Terminals	Fraction Dimension		Decimal Dimension		Millimeters Dimension	
	A	B	A	B	A	B
-2	1 13/32	1 1/4	1.41	1.13	35.7	28.6
-3	1 29/32	1 1/2	1.78	1.50	45.2	38.1
-4	2 1/32	1 7/8	2.16	1.88	54.7	47.6
-5	2 17/32	2 1/4	2.53	2.25	64.3	57.2
-6	2 29/32	2 5/8	2.91	2.63	73.8	66.7
-7	3 1/32	3	3.28	3.00	83.3	76.2
-8	3 17/32	3 3/8	3.66	3.38	92.8	85.7
-9	4 1/32	3 7/8	4.03	3.75	102.4	95.3
-10	4 17/32	4 1/4	4.41	4.13	111.9	104.8
-11	4 29/32	4 5/8	4.78	4.50	121.4	114.3
-12	5 1/32	4 7/8	5.16	4.88	130.9	123.8
-13	5 17/32	5 1/4	5.53	5.25	140.5	133.4
-14	5 29/32	5 5/8	5.91	5.63	150	142.9
-15	6 1/32	6	6.28	6.00	159.5	152.4
-16	6 17/32	6 3/8	6.66	6.38	169	161.9
-17	6 29/32	6 7/8	7.03	6.75	178.5	171.5
-18	7 1/32	7 1/4	7.41	7.13	188	181
-19	7 17/32	7 5/8	7.78	7.50	197.6	190.1
-20	7 29/32	7 7/8	8.16	7.88	207.1	200
-21	8 1/32	8 1/4	8.53	8.25	216.7	209.6
-22	8 17/32	8 3/8	8.91	8.63	226.2	219.1
-23	8 29/32	9	9.28	9.00	235.7	228.6
-24	9 1/32	9 1/4	9.66	9.38	245.2	238.1
-25	9 17/32	9 3/8	10.03	9.75	254.8	247.7
-26	9 29/32	10	10.41	10.13	264.3	257.2
-27	10 1/32	10 1/4	10.78	10.50	273.8	266.7
-28	10 17/32	10 3/8	11.16	10.88	283.3	276.2
-29	10 29/32	10 7/8	11.53	11.25	292.9	285.8
-30	11 1/32	11 1/4	11.91	11.63	302.4	295.3



4 TERMINAL BLOCKS