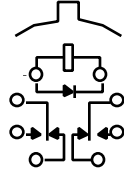




**HM·HS**

**STANDARD • SENSITIVE TO-5  
COMMERCIAL RELAY**



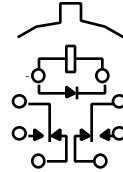
TERMINAL VIEW

**FEATURES**

- Hermetically sealed
- Spreader Pads
- Excellent RF switching

**HMD·HSD**

**STANDARD • SENSITIVE TO-5  
DIODE SUPPRESSED  
COMMERCIAL RELAY**



TERMINAL VIEW

**FEATURES**

- Suppression Diode
- Hermetically sealed
- Spreader Pads
- Excellent RF switching

**ELECTRICAL CHARACTERISTICS**

**CONTACT ARRANGEMENT**

2 Form C (DPDT)

**CONTACT MATERIAL**

Stationary:  
Gold/platinum/palladium/silver alloy  
(gold plated)

Moveable:  
Gold/platinum/palladium/silver alloy  
(gold plated)

**CONTACT RESISTANCE**

Before Life:  
100 milliohms max.  
(measured @ 10 mA @ 6 Vdc)

After Life:  
200 milliohms max.  
(measured @ 1 A @ 28 Vdc)

**MECHANICAL LIFE EXPECTANCY**

1 million operations

**ELECTRICAL CHARACTERISTICS**

**COIL VOLTAGE**

5 to 30 Vdc (HM/HMD)  
5 to 48 Vdc (HS/HSD)

**COIL POWER**

HM/HMD:  
675 mW max. @ 25°C

HS/HSD:  
565 mW max. @ 25°C

**DUTY CYCLE**

Continuous

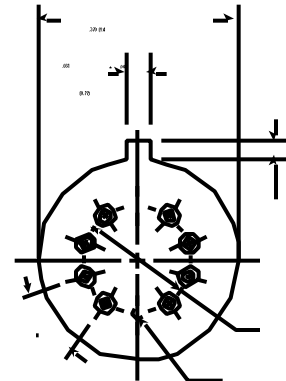
**PICK-UP VOLTAGE**

Approximately 70% of  
nominal coil voltage

**PICK-UP SENSITIVITY**

HM/HMD:  
180 mW max. @ 25°C

HS/HSD:  
90 mW max. @ 25°C



**HEADER**

**CONTACT RATINGS**

CONTACT LOAD	TYPE	OPERATIONS MIN.
1.0 A @ 28 Vdc	Resistive	100,000
250 mA @ 115 Vac, 60 Hz & 400 Hz	Resistive (Case not grounded)	100,000
100 mA @ 115 Vac, 60 Hz & 400 Hz	Resistive	100,000
0.2 A @ 28 Vdc	Inductive (0.32 Henry)	100,000
0.1 A @ 28 Vdc	Lamp	100,000
30 µA @ 50 mVdc	Low Level	1,000,000