

OPERATING CHARACTERISTICS

TIMING

Operate Time:
 SHC/SHCD: 4.0 ms max.
 SHCS/SHCSD: 6.0 ms max.

Release Time:
 SHC: 3.0 ms max.
 SHCS: 3.0 ms max.
 SHCD: 6.0 ms max.
 (suppression diode)
 SHCSD: 7.5 ms max.
 (suppression diode)

DIELECTRIC WITHSTANDING VOLTAGE

Between Open Contacts:
 350 Vrms 60 Hz

Between Adjacent Contacts:
 350 Vrms 60 Hz

Between Contacts & Coil:
 350 Vrms 60 Hz

INSULATION RESISTANCE

1,000 megohms @ 500 Vdc

ENVIRONMENTAL CHARACTERISTICS

TEMPERATURE RANGE

-55°C to + 85°C

WEIGHT

SHC/SHCD:
 0.09 oz. (2.55 gms)

SHCS/SHCSD:
 0.15 oz. (4.30 gms)

VIBRATION RESISTANCE

10 G's, 10 to 500 Hz

SHOCK RESISTANCE

30 G's, 6 ±1 ms

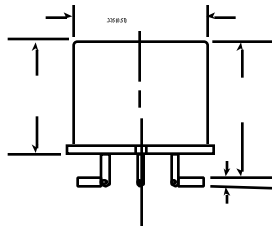
SEMICONDUCTOR CHARACTERISTICS

DIODE

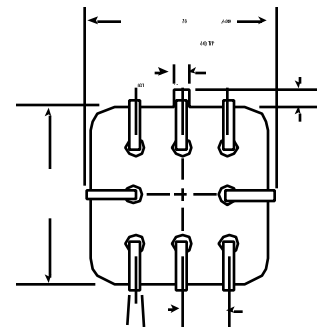
100 Vdc peak inverse voltage (PIV)
 1.0 Vdc max. transient voltage

STANDARD COIL DATA

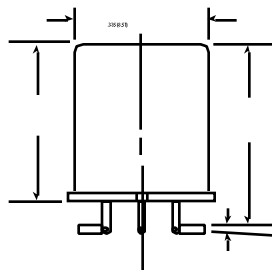
	NOM. COIL VOLTAGE (Vdc)	COIL RESISTANCE IN OHMS ±20% @ 25°C	PICKUP VOLTAGE Vdc (MAX.) @ 25°C	NOM. COIL POWER (mW) @ 25°C	MAX. COIL VOLTAGE	COIL DESIG.
SHC/SHCD	5.0	64	3.8	391	5.8	5
	6.0	98	4.9	367	8.0	6
	9.0	220	7.0	368	12.0	9
	12.0	400	9.0	360	16.0	12
	18.0	880	14.0	368	24.0	18
	26.5	1,600	18.0	439	32.0	26
SHCS/SHCSD	5.0	100	3.5	250	7.5	5
	6.0	200	4.5	180	10.0	6
	9.0	400	6.8	203	15.0	9
	12.0	800	9.0	180	20.0	12
	18.0	1,600	13.5	203	30.0	18
	26.5	3,200	18.0	219	40.0	26
	36.0	6,500	24.0	199	57.0	36
48.0	11,000	32.0	209	75.0	48	



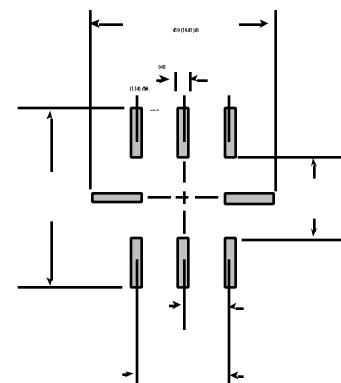
SHC/SHCD ENCLOSURE



SHC/SHCD/SHCS/SHCSD HEADER



SHCS/SHCSD ENCLOSURE



RECOMMENDED SOLDER PAD LAYOUT