

OPERATING CHARACTERISTICS

TIMING

Operate Time: 4.0 ms max. (HFW)
 5.0 ms max. (HMB)
 6.0 ms max. (HMS)
 Release Time: 4.0 ms max. (HFW)
 5.0 ms max. (HMB/HMS)

CONTACT BOUNCE

2.0 ms max.

DIELECTRIC WITHSTANDING VOLTAGE

Between Open Contacts:
 500 Vrms 60 Hz
 Between Adjacent Contacts:
 1000 Vrms 60 Hz
 Between Contacts & Coil:
 1000 Vrms 60 Hz
INSULATION RESISTANCE
 10,000 megohms min. @ 500 Vdc

ENVIRONMENTAL CHARACTERISTICS

TEMPERATURE RANGE

-65°C to +125°C

WEIGHT

0.46 oz. (13 gms max.)

VIBRATION RESISTANCE

HFW/HMB/HMS:
 Standard: 20 G's, 10 to 2,000 Hz
 HFW/HMB:
 QPL: 30 G's, 10 to 3,000 Hz
 HMS:
 QPL: 20 G's, 10 to 2,500 Hz

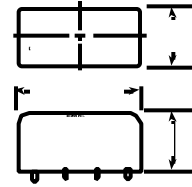
SHOCK RESISTANCE

100 G's, 6 ± 1 ms
 50 G's, 11 ± 1 ms (HMS)

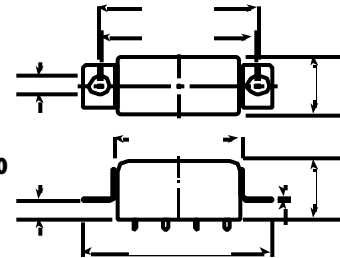
QPL APPROVAL

MIL-R-39016/6 (HFW)
 MIL-R-39016/22 (HMB)
 MIL-R-39016/44 (HMS)

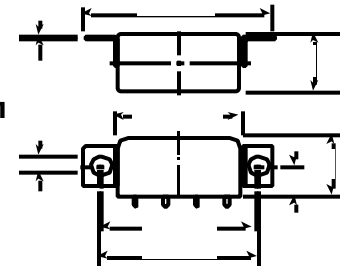
01



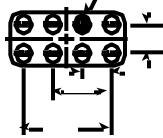
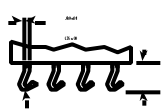
30



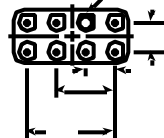
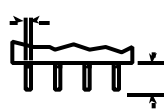
31



11



12



TERMINALS

MOUNTING STYLES

7 RELAYS

STANDARD COIL DATA

	NOM. COIL VOLTAGE (Vdc)	COIL RESISTANCE IN OHMS ±10% @ 25°C	PICKUP VOLTAGE Vdc (MAX.) @ 25°C	PICKUP VOLTAGE Vdc (MIN.) @ 125°C	DROP-OUT VOLTAGE Vdc (MIN.) @ 25°C	DROP-OUT VOLTAGE Vdc (MIN.) @ -65°C	NOM. COIL POWER (mW) @ 25°C	MAX. COIL VOLTAGE	COIL DESIG.
HFW/HFW4A/HFW5A	5.0	27	2.7	3.8	0.29	0.21	926	6.0	L
	6.0	40	3.2	4.5	0.35	0.25	900	7.5	F
	12.0	160	6.4	9.0	0.7	0.5	900	15.0	G
	26.5	700	13.5	18.0	1.5	1.0	1003	32.0	K
HMB	6.0	40	3.6	4.8	0.35	0.25	900	7.5	F
	12.0	160	7.2	9.6	0.7	0.5	900	15.0	G
	26.5	700	15.0	20.0	1.5	1.0	1003	32.0	K
HMS	5.0	47	2.2	3.2	0.21	0.12	532	7.0	S001
	6.0	75	2.75	4.0	0.27	0.17	480	9.0	S002
	12.0	310	5.6	8.0	0.55	0.35	465	20.0	S003
	26.5	1,030	11.4	16.5	1.1	0.7	682	35.0	S004
	30.0	1,620	14.3	21.0	1.4	0.9	556	44.0	S005
	36.0	2,640	18.0	26.0	1.8	1.1	491	56.0	S006
OTHER	6-8	60	3.5	4.85	0.35	0.22	817	9.0	A
	(avail. for	12-15	320	6.8	9.42	0.68	570	21.0	B
	HFW/HFW4A	18.0	520	9.5	13.16	0.95	623	27.0	J
	relays only)	26.5-32	1,250	14.0	19.4	1.5	684	42.0	D
		40.0	2,700	21.3	29.5	2.1	593	61.0	H
	48.0	3,500	25.5	35.3	2.5	658	70.0	E	

SPECIFYING A PART NUMBER EXAMPLE:

TYPE HFW **TERMINALS** 12 **MOUNTINGS** 30 **COILS** K **FEATURES** 00 (n/a HMS)