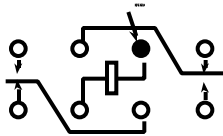


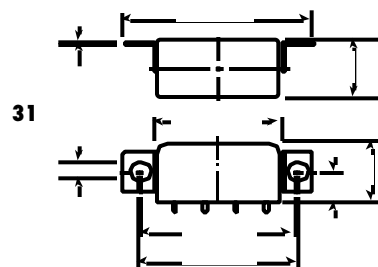
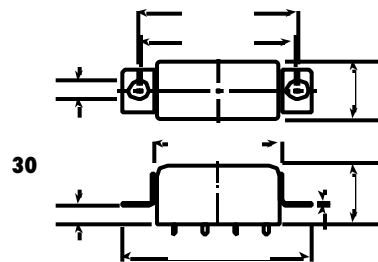
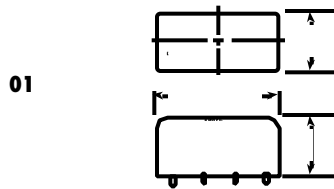
## HFC

COMMERCIAL/INDUSTRIAL  
HALF SIZE RELAY



### FEATURES

- Hermetically sealed
- Up to 5 amps switching
- Economical configuration
- Optional terminals & mounting styles



MOUNTING STYLES

### ELECTRICAL CHARACTERISTICS

#### CONTACT ARRANGEMENT

2 Form C (DPDT)

#### CONTACT MATERIAL

Stationary:  
Bifurcated hardened silver alloy

Moveable:  
Gold plated hardened alloy

#### CONTACT RESISTANCE

Before Life: 50 milliohms max.  
(measured at 10 mA @ 6 Vdc)

After Life: 100 milliohms max.  
(measured @ 2 A @ 28 Vdc)

#### MECHANICAL LIFE EXPECTANCY

10 million operations

#### COIL VOLTAGE

5 to 26.5 Vdc

#### COIL POWER

1.4 watts max. @ 25°C

#### DUTY CYCLE

Continuous

#### PICK-UP VOLTAGE

Approximately 60% of  
nominal coil voltage

#### PICK-UP SENSITIVITY

360 mW

### OPERATING CHARACTERISTICS

#### TIMING

Operate Time:  
6.0 ms max.

Release Time:  
6.0 ms max.

#### DIELECTRIC WITHSTANDING VOLTAGE

Between Open Contacts:  
350 Vrms 60 Hz

Between Adjacent Contacts:  
500 Vrms 60 Hz

Between Contacts and Coil:  
500 Vrms 60 Hz

#### INSULATION RESISTANCE

1,000 megohms min @ 500 Vdc

### ENVIRONMENTAL CHARACTERISTICS

#### TEMPERATURE RANGE

-55°C to +85°C

#### WEIGHT

0.46 oz. (13 gms) max.

#### VIBRATION RESISTANCE

10 G's, 10 to 500 Hz

#### SHOCK RESISTANCE

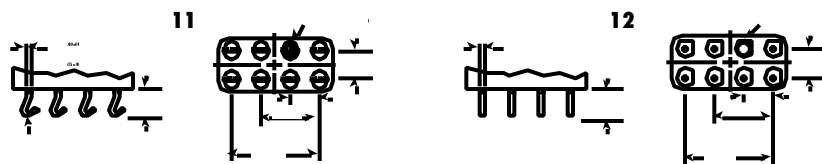
30 G's, 6 ± 1 ms

### CONTACT RATINGS

	CONTACT LOAD	TYPE	OPERATIONS MIN.
	2 A @ 28 Vdc	Resistive	100,000
<b>HFC4A</b>	4 A @ 28 Vdc	Resistive	100,000
<b>HFC5A</b>	5 A @ 28 Vdc	Resistive	100,000
	0.75 A @ 28 Vdc	Inductive (200 mH)	100,000
	0.3 A @ 115 Vac, 60 Hz & 400 Hz	Resistive	100,000

### STANDARD COIL DATA

NOM. COIL VOLTAGE (Vdc)	COIL RESISTANCE IN OHMS ± 20% @ 25°C	PICKUP VOLTAGE Vdc (MAX.) @ 25°C	PICKUP VOLTAGE Vdc (MAX.) @ 85°C	NOM. COIL POWER (W) @ 25°C	MAX. COIL VOLTAGE	COIL DESIG.
5.0	27	3.0	3.7	.92	6.0	L
6.0	40	3.6	4.5	.90	7.5	F
12.0	160	7.2	8.9	.90	15.0	G
26.5	700	16.0	19.7	1.00	32.0	K



TERMINALS

SPECIFYING A PART NUMBER EXAMPLE:

**TYPE** HFC    **TERMINALS** 12    **MOUNTINGS** 30    **COILS** K    **FEATURES** 00