

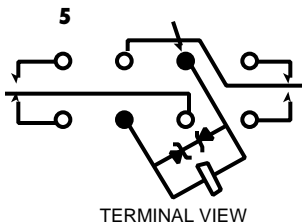
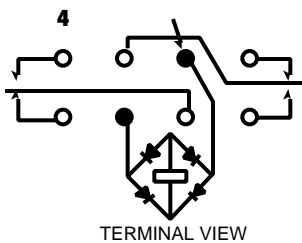
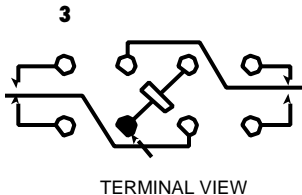
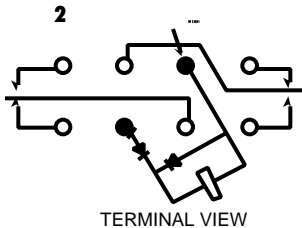
07

**TWO POLE 10 AMP
HIGH-PERFORMANCE RELAY**

**QUALIFIED TO MIL-R-5757/23
MS 27245 & MS 27247**

FEATURES

- Hermetically sealed
- Up to 10 amps switching
- High shock & vibration ratings
- Optional terminals & mounting styles
- DC, AC & diode-suppressed coils



ELECTRICAL CHARACTERISTICS

CONTACT ARRANGEMENT

2 Form C (DPDT)

CONTACT MATERIAL

Stationary: Silver cadmium oxide
Moveable: Silver cadmium oxide

CONTACT RESISTANCE

Before Life: 10 milliohms max.
After life: 20 milliohms max.
(Measured at 10 A @ 28 Vdc)

MECHANICAL LIFE EXPECTANCY

1 million operations

COIL VOLTAGE

6 to 120 Vdc,
115 Vac

COIL POWER

4.3 watts max. @ 25°C

DUTY CYCLE

Continuous

PICK-UP VOLTAGE

Approximately 50% of
nominal coil voltage

PICK-UP SENSITIVITY

565 mW

CONTACT RATINGS*

CONTACT LOAD	TYPE	OPERATIONS MIN.
10 A @ 28 Vdc	Resistive	100,000
3 A @ 115 V, 60 Hz	Resistive	50,000
5 A @ 115 V, 400 Hz	Resistive	50,000
6 A @ 28 Vdc	Inductive	50,000
2 A @ 115 V, 60 Hz	Inductive	50,000
2.5 A @ 115 V, 400 Hz	Inductive	50,000
1 A @ 28 Vdc	Lamp	50,000
0.5 A @ 115 V, 60 Hz	Lamp	50,000
0.8 A @ 115 V, 400 Hz	Lamp	50,000
3 A @ 28 Vdc	Motor	50,000
1.5 A @ 115 V, 60 Hz	Motor	50,000
3 A @ 115 V, 400 Hz	Motor	50,000

*All ratings grounded case

OPERATING CHARACTERISTICS

TIMING

Operate time:
Std: 10 ms max.
QPL: 15 ms max.

Release Time:
Std: 10 ms max.
QPL: 15 ms max.

CONTACT BOUNCE

Std: 5 ms max. (N.O. and N.C.)
QPL: 2 ms max. (N.O.)
QPL: 5 ms max. (N.C.)

DIELECTRIC WITHSTANDING VOLTAGE

Between Open Contacts:
500 Vrms 60 Hz

Between Adjacent Contacts:
1000 Vrms 60 Hz

Between Contacts and Coil:
1000 Vrms 60 Hz

INSULATION RESISTANCE

1,000 megohms min. @ 500 Vdc

ENVIRONMENTAL CHARACTERISTICS

TEMPERATURE RANGE

-65°C TO +125°C

WEIGHT

1.3 oz (37 gms) max.

VIBRATION RESISTANCE

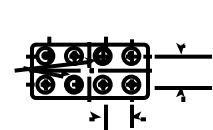
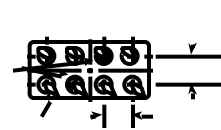
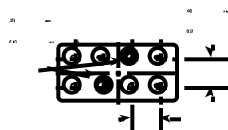
Standard: 30 G's, 10 to 2,000 Hz
QPL: 20 G's, 10 to 2,000 Hz

SHOCK RESISTANCE

100 G's, 6 ±1 ms

QPL APPROVAL

MIL-R-5757/23
MS 27245
MS 27247



TERMINALS