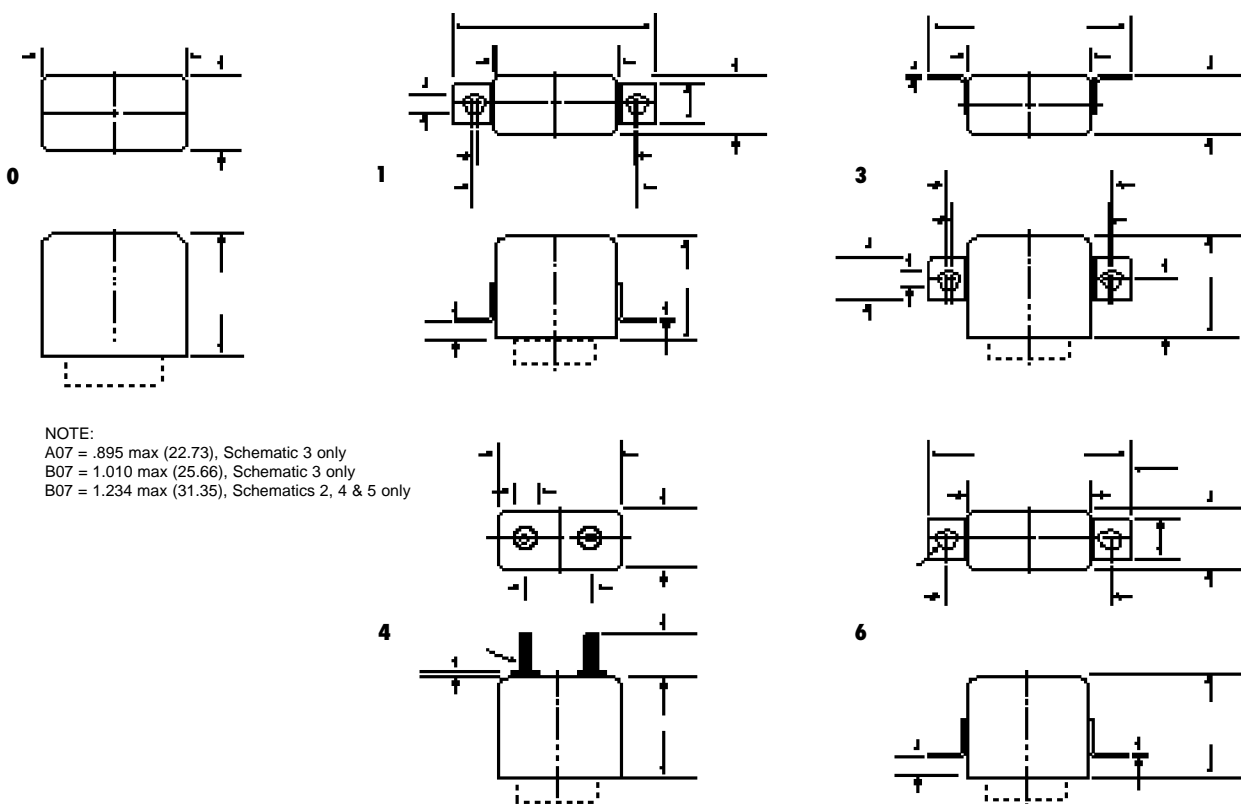


**7
RELAYS**

COIL DATA									
NOM. COIL VOLTAGE (Vdc)	COIL RESISTANCE IN OHMS ±10% @ 25°C	PICKUP VOLTAGE Vdc (MAX.) @ 25°C	PICKUP VOLTAGE Vdc (MAX.) @ 125°C	DROP-OUT VOLTAGE Vdc (MIN.) @ 125°C	DROP OUT VOLTAGE Vdc (MIN.) @ -65°C	NOM. COIL POWER (mW) @ 25°C	MAX. COIL VOLTAGE	COIL DESIG.	ENVIRONMENTAL
6.0	19	3.6	4.5	0.4	0.25	1.89	9.0	AA	TEMPERATURE -55°C to +85°C
12.0	75	7.2	9.0	0.9	0.5	1.92	16.0	AB	
26.5	300	14.4	18.0	1.8	1.0	2.34	32.0	AC	VIBRATION 20G's, 10 to 2,000Hz
48.0	1,200	29.0	36.0	3.6	2.0	1.92	52.0	AD	
120.0	7,600	72.0	90.0	9.0	5.0	1.89	122.0	AE	SHOCK 50G's, 11ms
115 Vac 400Hz	1,200	72.0	90.0	10.0	5.0	n/a	n/a	AR	
115 Vac60-400Hz	7,600	72.0	90.0	10.0	5.0	n/a	n/a	AS	TEMPERATURE -55°C to +85°C
6.0	19	3.3	4.5	0.4	0.25	1.89	9.0	BA	
12.0	75	6.5	9.0	0.9	0.5	1.92	16.0	BB	VIBRATION 20G's, 10 to 2,000Hz
26.5	300	13.0	18.0	1.8	1.0	2.34	32.0	BC	
48.0	1,200	26.0	36.0	3.6	2.0	1.92	52.0	BD	SHOCK 50G's, 11ms
120.0	7,600	66.0	90.0	9.0	5.0	1.89	122.0	BE	
115 Vac 400Hz	1,200	75.0	90.0	10.0	5.0	n/a	n/a	BR	TEMPERATURE -65°C to +125°C
115 Vac60-400Hz	7,600	75.0	90.0	10.0	5.0	n/a	n/a	BS	
6.0	19	3.7	5.0	0.4	0.25	1.89	9.0	CA	VIBRATION 30G's, 10 to 2,000Hz
12.0	75	7.4	10.0	0.9	0.5	1.92	16.0	CB	
26.5	300	14.7	20.0	1.8	1.0	2.34	32.0	CC	SHOCK 100G's, 6ms
48.0	1,200	29.4	40.0	3.6	2.0	1.92	52.0	CD	
120.0	7,600	74.0	100.0	9.0	5.0	1.89	122.0	CE	TEMPERATURE -65°C to +125°C
115 Vac 400Hz	1,200	80.0	100.0	10.0	5.0	n/a	n/a	CR	
115 Vac60-400Hz	7,600	80.0	100.0	10.0	5.0	n/a	n/a	CS	



NOTE:
 A07 = .895 max (22.73), Schematic 3 only
 B07 = 1.010 max (25.66), Schematic 3 only
 B07 = 1.234 max (31.35), Schematics 2, 4 & 5 only

07 MOUNTING STYLES

SPECIFYING A PART NUMBER EXAMPLE:

TYPE	RATINGS	MOUNTINGS	SCHEMATIC	TERMINALS	COIL	TESTING
B07	B	3	3	2	BC	1