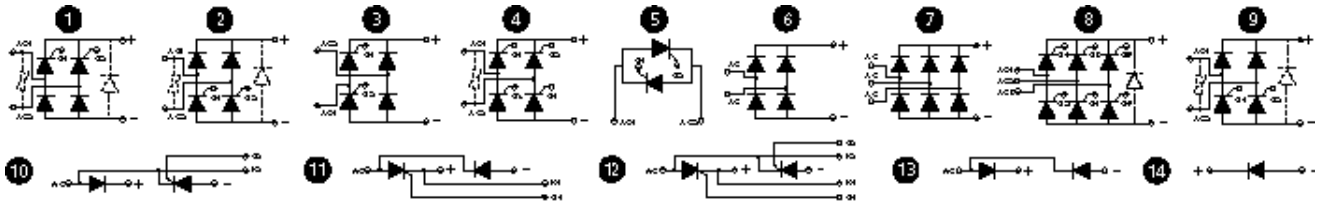


Power Modules

Crydom is your single source for all your SCR/diode power module needs. Choose from a wide selection of ready-to-use circuit configurations, in virtually any package size and power rating. And when you want something special, Crydom can produce custom circuitry to your exacting specifications.

Top quality and dependability are assured in Crydom's ISO 9002 certified manufacturing facilities.

7 RELAYS



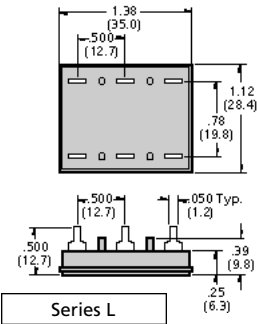
SERIES L 15-42.5 Amp • SCR/Diode Module

- Low Profile
- Designed for PCB Connections



PCB MOUNT Type	Current (Amps)	Circuit Fig. No.	AC Line Input Voltage (Vac)	Repetitive Peak Rev. Voltage (V_{RRM})	Max. Non-Repetitive Surge Current (I_{TSM})
L312F	15	1	240	600	225
L512F	25	1	240	600	300
L514F	25	1	480	800	300
L522F	25	2	240	600	300
L542	25	4	240	600	300
L612F	42.5	1	240	600	600
L622F	42.5	2	240	600	600
L652	42.5	5	240	600	600

Operating Temp Range: -30°C to 80°C Isolation Voltage (Vac): 2500



Series L

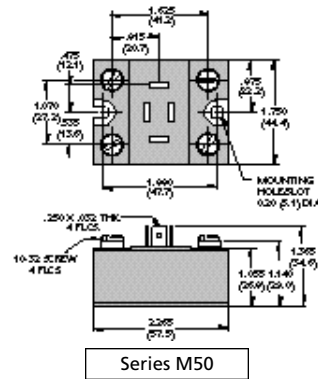
SERIES M50 50-100 Amp • SCR/Diode Module

- Over 40KW Output Capability



PANEL MOUNT Type	Current (Amps)	Circuit Fig. No.	AC Line Input Voltage (Vac)	Repetitive Peak Rev. Voltage (V_{RRM})	Max. Non-Repetitive Surge Current (I_{TSM})
M5010045V*	100	5	480	1200	1500
M50100SB1200	100	6	480	1200	1500
M50100SB600	100	6	240	600	1500
M50100TB1200	100	7	480	1200	1500
M50100TB600	100	7	240	600	1500
M505012F	50	1	240	600	600
M505012FV*	50	1	240	600	600
M505015F	50	1	480	1200	600
M505015FV*	50	1	480	1200	600
M505032	50	4	240	600	600
M505035	50	4	480	1200	600
M505042	50	5	240	600	600
M505045	50	5	480	1200	600
M5060SB1200	60	6	480	1200	800
M5060SB600	60	6	240	600	800
M5060TB1200	60	7	480	1200	800
M5060TB600	60	7	240	600	800
M508012F	80	1	240	600	1500

* V = external suppressor Operating Temp Range: -30°C to 80°C Isolation Voltage (Vac): 2500



Series M50

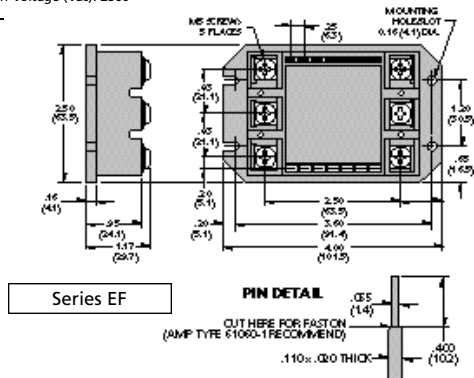
SERIES EF 50-170 Amp • SCR/Diode Module

- ▶ High Thermal Efficiency
- ▶ Complete Power Control Circuits in a Single Package



PANEL MOUNT Type	Current (Amps)	Circuit Fig. No.	AC Line Input Voltage (Vac)	Repetitive Peak Rev. Voltage (V_{RRM})	Max. Non-Repetitive Surge Current (I_{TSM})
EFD01FF	50	1	480	1200	400
EFE01FF	75	1	480	1200	600
EFE13C	75	6	240	600	600
EFE15C	100	7	240	600	600
EFE15F	100	7	480	1200	600
EFE16F	100	8	480	1200	600
EFF01FF	100	1	480	1200	1500
EFG13C	125	6	240	600	1950
EFG15C	170	7	240	600	1950
EFG15F	170	7	480	1200	1950

Operating Temp Range: -30°C to 80°C Isolation Voltage (Vac): 2500



Series EF