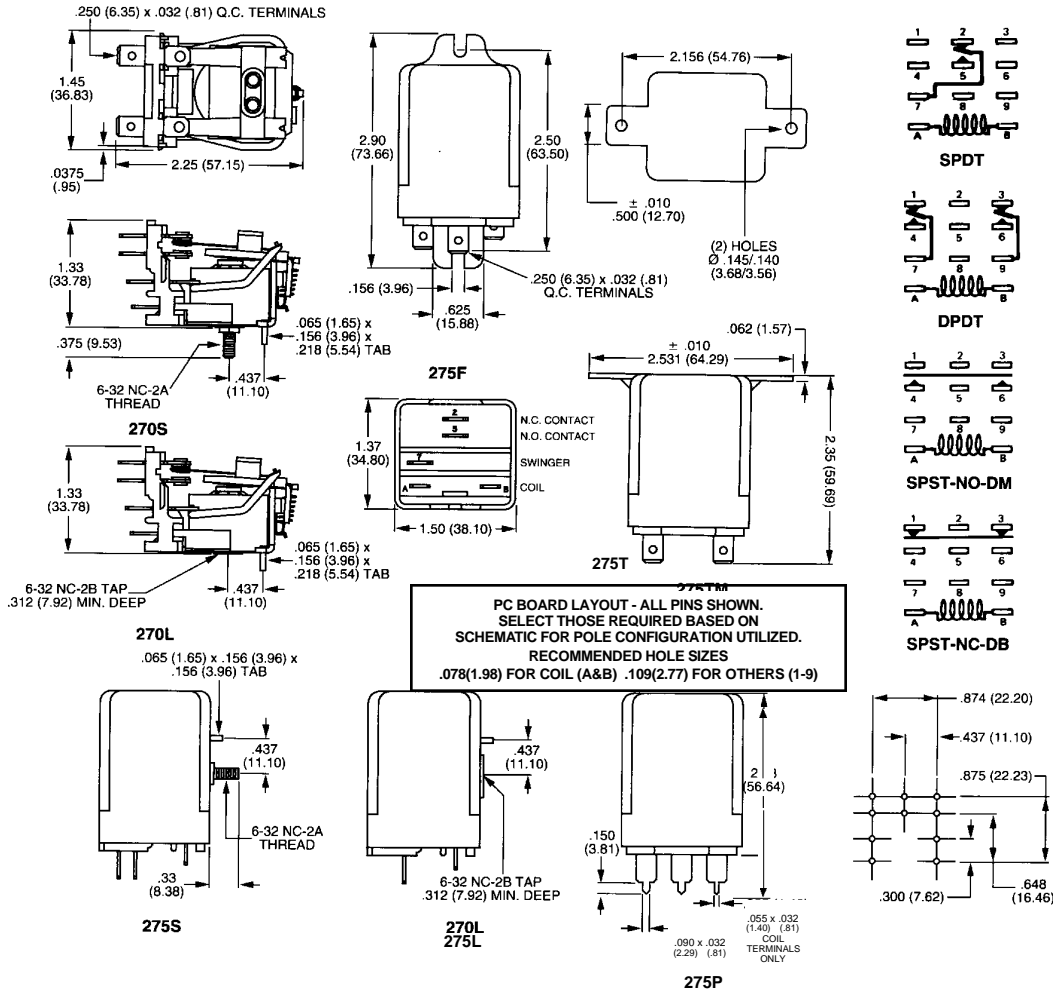


DIMENSIONS [Unit Inch (mm)]

SCHEMATICS

**7
RELAYS**



ORDERING INFORMATION

30 AMP Part Numbers

MODEL	POLE CONFIG.	AC Coils			DC Coils		
		24VAC	120VAC	240VAC	12VDC	24VDC	110VDC
275F	SPST-NO	20837-82	20837-84	20837-85	20845-81	20845-82	20845-84
	SPST-NC	20838-82	20838-84	20838-85	20846-81	20846-82	20846-84
	SPDT	20839-82	20839-84	20839-85	20847-81	20847-82	20847-84
	DPST-NO	20842-82	20842-84	20842-85	20850-81	20850-82	20850-84
	DPST-NC	20843-82	20843-84	20843-85	20851-81	20851-82	20851-84
	DPDT	20844-82*	20844-84*	20844-85	20852-81	20852-82*	20852-84
275P	SPST-NO	20973-82	20973-84	20973-85	20970-81	20970-82	20970-84
	SPST-NC	21058-82	21058-84	21058-85	21059-81	21059-82	21059-84
	SPDT	21057-82	21057-84	21057-85	21016-81	21016-82	21016-84
	DPST-NO	21044-82	21044-84	21044-85	21023-81	21023-82	21023-84
	DPST-NC	20976-82	20976-84	20976-85	20934-81	20934-82	20934-84
	DPDT	20931-82	20931-84	20931-85	20930-81	20930-82	20930-84
275T	SPST-NO	20993-82	20993-84	20993-85	21001-81	21001-82	21001-84
	SPST-NC	20994-82	20994-84	20994-85	21002-81	21002-82	21002-84
	SPDT	20995-82	20995-84	20995-85	21003-81	21003-82	21003-84
	DPST-NO	20998-82	20998-84	20998-85	21006-81	21006-82	21006-84
	DPST-NC	20999-82	20999-84	20999-85	21007-81	21007-82	21007-84
	DPDT	21000-82	21000-84	21000-85	21008-81	21008-82	21008-84

35 AMP Part Numbers

275F	SPST-NO-DM	20840-82	20840-84	20840-85	20848-81	20848-82*	20848-84
	SPST-NC-DB	20841-82	20841-84	20841-85	20849-81	20849-82	20849-84
275T	SPST-NO-DM	20996-82	20996-84	20996-85	21004-81	21004-82	21004-84
	SPST-NC-DB	20997-82	20997-84	20997-85	21005-81	21005-82	21005-84

*Black Items Are Normally Stocked.

Gray Items Are Non Stock. Minimum Quantity May Be Required.