

CLASS 104 DRY MINIATURE REED RELAY

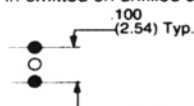
MINIATURE
REED

7

PIN SPACING OF .100" IS STANDARD. PIN SPACING OF .150 IS AVAILABLE ON SPECIAL ORDER. ALSO AVAILABLE ARE MODELS WITH ELECTROSTATIC SHIELDS.

NONSTANDARD SCHEMATICS AND PIN-OUTS CAN ALSO BE PRODUCED FOR SPECIFIC CUSTOMER REQUIREMENTS.

Spacing between filled in circles in schematics are on a .100 Grid Pattern. Pin omitted on unfilled circles.



RELAYS

CASE SIZE	CIRCUIT DIAGRAM TOP VIEW	Magnecraft PART NUMBER	COIL MEASURED AT 25°C					MAX. CONTACT RATING		
			NOMINAL INPUT VOLTAGE	MAXIMUM PULL-IN	MAXIMUM DROPOUT	NOMINAL RESISTANCE (OHMS)	NOMINAL POWER (mW)	MAX. RESISTIVE LOAD	SWITCHING CURRENT & VOLTAGE	CARRY CURRENT
SPST (1 FORM "C")										
I		W104MPCX-3	24	18.0	2.0	2600	220	4 VA	0.25 AMP 100VDC	0.5 AMPS
III		W104MPCX-6	12	9.0	1.0	230	626	4 VA	0.25 AMP 100VDC	0.5 AMPS
DPDT (2 FORM "C")										
III		W104MPCX-149 W104MPCX-150 W104MPCX-151	5 12 24	4.0 9.0 18.0	0.5 1.0 2.0	45 230 1200	556 626 480	4 VA	0.25 AMP 100VDC	0.5 AMPS
CLASS 134 MERCURY										
DPDT(2 FORM "C") MERCURY										
II		W134MPCX-7 W134MPCX-8	5 12	4.0 9.6	0.5 1.0	45 230	560 620	50 VA	1.0 AMP 500 VDC	2.0 AMPS
II		W134MPCX-10 W134MPCX-11	5 12	4.0 9.6	1.0 1.0	45 230	560 620	50 VA	1.0 AMP 500 VDC	2.0 AMPS
SPDT (1 FORM "C") MERCURY										
I		W134MPCX-1 W134MPCX-2 W134MPCX-3	5 12 24	4.0 9.0 18.0	0.5 1.0 2.0	60 330 1400	417 435 410	50 VA	1.0 AMP 500 VDC	2.0 AMPS

For Class 134 allow a minimum of 30 seconds after mounting for excess Mercury to clear from the contacts before using.