

30 AMP MERCURY DISPLACEMENT RELAY

**CLASS
MDR**



CLASS M30
 RATED 30 AMPS
 SWITCHES RESISTIVE
 TUNGSTEN, AND MOTOR LOADS
 1 POLE N.O. CONTACT
 SCREW TERMINALS



SPECIFICATIONS MERCURY DISPLACEMENT RELAYS

COIL

Frequency of Operation: 60 per minute max.
 Pull-in voltage: 80% of nominal voltage, Typ. AC & DC coils.
 Dropout voltage: 78% of nominal voltage, typ. AC coils
 65% of nominal voltage, typ. DC coils

CONTACTS

Material: Mercury
 Contact resistance: .004 Ohm terminal to terminal

TIMING

Operate (at nominal voltage) 50 Milliseconds typical
 Dropout (at nominal voltage) 80 Milliseconds typical

DIELECTRIC STRENGTH

All mutually insulated points to ground: 2650 V rms (1 Second)

TEMPERATURE

Operating: - 35°C to + 60°C Under continuous load.

LIFE

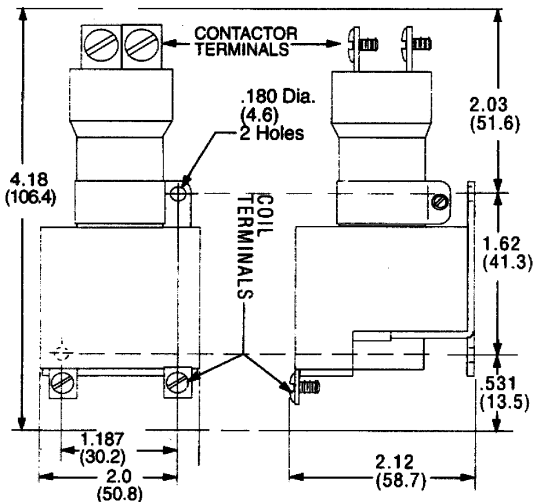
Mechanical: (No load) 5,000,000 Operations
 Electrical (Rated load) 100,000 Operations

MISCELLANEOUS

Insulation Material: Class B - 130°C
 Mounting: Vertical ±10°
 Options: Form "A" and "B" contact configurations. Other coil voltages available other then listed in MDR section
 Weight: 13 ozs. 370 grams.

FOR EXTENDED LOAD LIFE WHEN SWITCHING RESISTIVE AND TUNGSTEN LOADS ORDER THE ML30-STYLE. OTHER COIL VOLTAGE AND CONTACT COMBINATIONS AVAILABLE.

Construction in accordance with VDE 0660 and 0110 (Insulation group 380)



CONTACTOR RATINGS FOR M30A - M30B

VOLTAGE	PHASE	HP		MOTOR AMPS		RESISTIVE AMPS	TUNGSTEN AMPS
		1∅	3∅	1∅	3∅		
120VAC	1∅ 3∅	2*	3*	24	19.2	30*	30*
240VAC	1∅ 3∅	5*	7.5*	28	19	30*	15
480VAC	1∅ 3∅	5*	10*	14	14	30*	7.5
600VAC	1∅ 3∅	5*	10*	11.2	11	25 **	6
24VDC	DC	1/2		27		30*	30*
48VDC	DC	1/2		13.5		30*	30*
125VDC	DC	1/2		5.2		16*	16*
250VDC	DC	1/2		2.6		12*	12*

* UL and CSA Listed ** CSA only

Magnecraft PART NUMBER	COIL Measured @ 25°C			
	NOMINAL INPUT VOLTAGE	NOMINAL RESISTANCE (OHMS)	NOMINAL CURRENT	NOMINAL POWER
WM30A-120A	120 VAC	700	.058	7VA