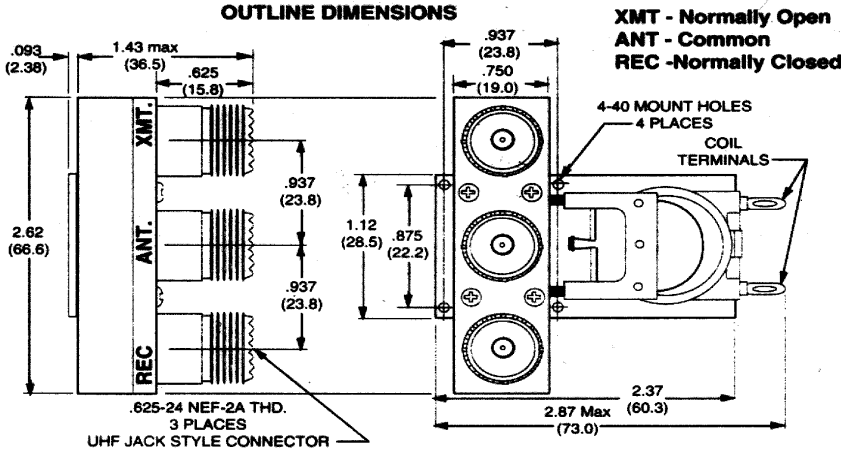
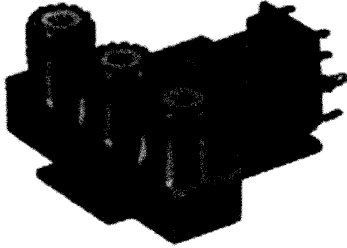


# 500 WATT, COAXIAL R.F. SWITCHING RELAY

CLASS  
**128**

**128 COAXIAL RELAY**  
 PANEL MOUNT WITH UHF CONNECTORS  
 AUXILIARY CONTACTS  
 AC OR DC INPUT AVAILABLE.

Dimensions are shown in INCHES and (MILLIMETERS).  
 Drawing shown without Auxiliary Contacts, but max.  
 Dimensions are the same as shown.



**GENERAL SPECIFICATIONS**

**R.F. CONTACTS**

R.F. Load rating:	500 Watts max. up to 1000 MHz
Contact Configuration:	SPDT (1 Form "C")
Contact Resistance (Initial):	50 Milliohms
VSWR ( Voltage Standing Wave Ratio)	1.25 to 1 max., up to 470 MHz
Cross Talk:	40 DB min., up to 470 MHz.

**TIMING**

Operate Time:	20 mS Max. @ Nominal Voltage.
Release Time:	20 mS Max. @ Nominal Voltage.

**DIELECTRIC STRENGTH**

All Mutually Insulated current carrying parts to ground:	1000 V rms @ Sea level
Insulation Resistance:	1000 Megohms min. 500 V

**TEMPERATURE**

Rated Operation:	-55°C to +65°C
------------------	----------------

**VIBRATION:**

Rated Operation:	10 to 55 Hz @ 10 G's acceleration
------------------	-----------------------------------

**SHOCK**

Rated Operation:	30 G's @ 11ms
------------------	---------------

**LIFE EXPECTANCY**

Mechanical:	100,000 Operations @ Rated Load.
Electrical:	5 Million Operations no load

**MISCELLANEOUS**

Connectors:	UHF Standard, 50 Ω Impedance
-------------	------------------------------

**AUXILIARY CONTACTS**

Auxiliary Contact Load Rating:	10 Amps at 120 VAC, 28 VDC Resistive.
Contact Configuration:	DPDT, (2 Form "C")
Contact Material:	Silver Alloy, Gold Flashed
Weight:	9 oz. - 255.1 grams.

Magnecraft PART NUMBER	R.F CONTACT CONFIGURATION	AUXILIARY CONTACT CONFIGURATION	COIL Measured @ 25°C	
			NOMINAL INPUT VOLTAGE	NOMINAL RESISTANCE (OHMS)
<b>DC OPERATED - WITHOUT AUXILIARY CONTACTS</b>				
W128X-9	SPDT	NONE	12 VDC	100
<b>AC OPERATED - WITH AUXILIARY CONTACTS</b>				
W128AX-11	SPDT	DPDT	120 VAC	-
<b>DC OPERATED - WITH AUXILIARY CONTACTS</b>				
W128X-14	SPDT	DPDT	12 VDC	100
W128X15	SPDT	DPDT	24 VDC	400