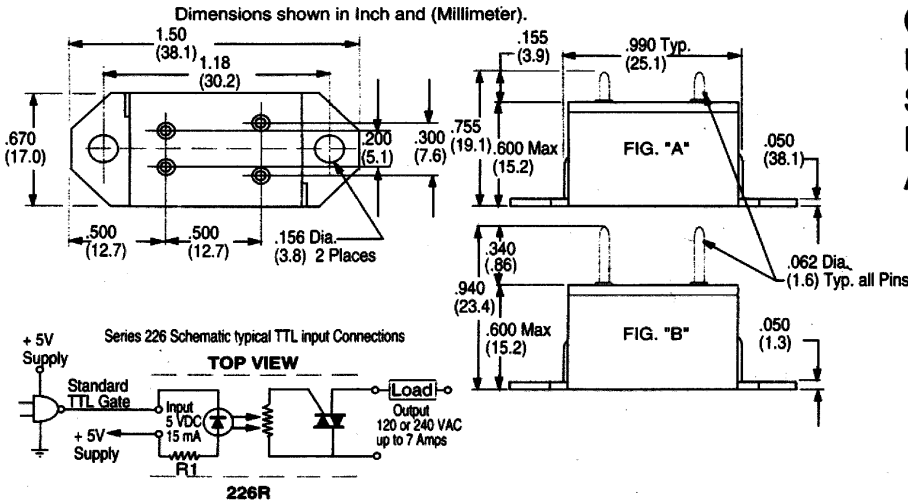


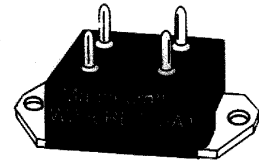
MINIATURE SOLID STATE RELAY

CLASS 226

7 RELAYS



CLASS 226
UP TO 7 AMPS
SPST—NO
DC INPUTS
AC OUTPUTS



COMPATIBLE WITH TTL GATES.
PRINTED CIRCUIT AND PUSH-ON
TERMINAL PIN VERSIONS.

PUSH-ON TERMINAL RECEPTICALS

FOR 18-22 AWG MOLEX WINCHESTER
FOR 24-30 02-06-1103 156-10185
02-06-1132 156-10245



Magnecraft PART NUMBER	PUSH ON TERMINALS	FIG "A"	W226R-7-5A1	W226R-7-12A1	W226R-8-5A1	W226R-8-12A1
	PRINTED CIRCUIT TERMINALS	FIG "B"	W226RE-7-5A1	W226RE-7-12A1	W226RE-8-5A1	W226RE-8-12A1
INPUT CHARACTERISTICS						
Input Voltage Range			5VDC	12VDC	5VDC	12VDC
Maximum Pickup Voltage (over operating temperature range)			4.3VDC	10.3VDC	4.3VDC	10.3VDC
Minimum Dropout Voltage (over operating temperature range)			1.5VDC			
Input Current			Input current (at nominal voltage) 13mA typical / 15mA max.			
Reverse Polarity Protected			No			
Input Filtered for transients less than one millisecond.			No			
Response Time			Turn on, 16m Sec. Max.,		Turn off, 60m Sec. Max.	
OUTPUT CHARACTERISTICS						
Nominal Off State Voltage V_D (RMS)			120		240	
Maximum Off State Voltage $V_{D MAX}$ (RMS)			260		380	
Minimum Off State Voltage $V_{D MIN}$ (RMS)			20		40	
Non-Repetitive Peak Voltage V_{DSM} (Blocking Voltage)			400		700	
Maximum Rate of Rise of Off State Voltage dv/dt			100V/uSec blocking		4V/uSec commutating	
Rated Load Current I_L (RMS)* All current ratings are based on use of suitable thermally conductive compound (e.g. silicone grease between the SSR mounting base and mounting surface of suitable heat sink).			7 Amp			
Minimum Load Current $I_{T MIN}$ (RMS) to maintain "On"			20mA			
Non-Repetitive Surge Current $I_{T SM}$ (one Cycle Surge)			50 Amp			
Maximum RMS Overload current for 1 second			18 Amp			
Maximum Off State Leakage current I_D (RMS)			0.1mA @ 25°C		1.0 mA @ 25°C max.	
Maximum RMS On-State Voltage V_T (RMS) Maximum Voltage drop across relay output @ rated current			1.8V		3.6V	
MISCELLANEOUS CHARACTERISTICS						
Max. I^2T for fusing (8.3 m Sec)			24			
Thermal Resistance Junction to Case			3°C/w			
Suggested Heat Sink			TO—3 mounting			
Dielectric Strength V_{ISO} (Input-Output Isolation)			2500 VAC			
Insulation Resistance R_{ISO} @ 500VDC			10 ¹⁰ Ω			
Operating temperature Range			-40° to + 65°C			
Storage temperature Range			-40° to + 85°C			
Weight			0.37 oz. (10.6g)			