

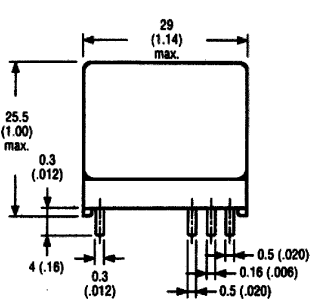
## G2R

## Power PCB Relay

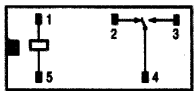
### Dimensions [Unit: mm (inch)]

#### PCB Terminal: SPDT

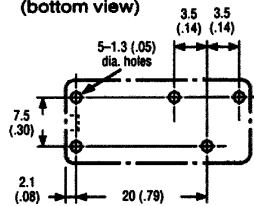
(General Purpose, High Sensitivity)



#### Terminal arrangement/ Internal connections (bottom view)

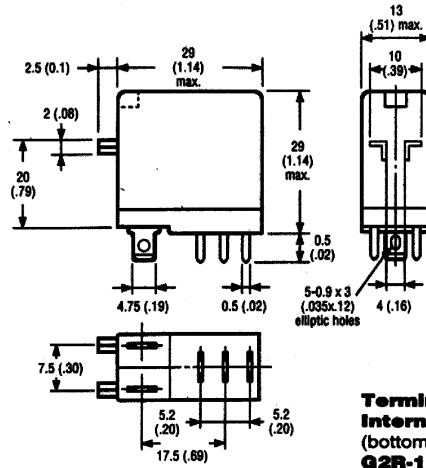


#### Mounting holes (bottom view)

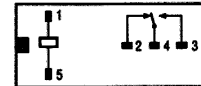


Note: 1. For SPST-NO, standard version, remove terminal no. 2.  
2. ■ and □ indicate mounting orientation marks.

#### Plug-in: SPDT

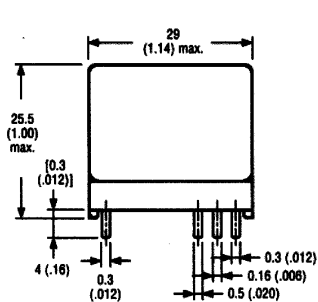


#### Terminal arrangement/ Internal connections (bottom view) G2R-1-S

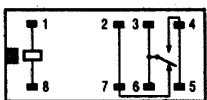


Note: 1. ■ and □ indicate mounting orientation marks.

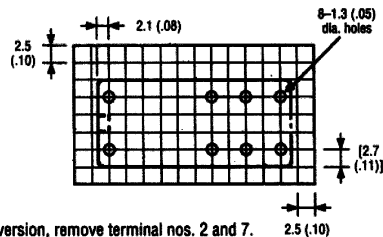
#### PCB: SPDT High Capacity



#### Terminal arrangement/ Internal connections (bottom view)

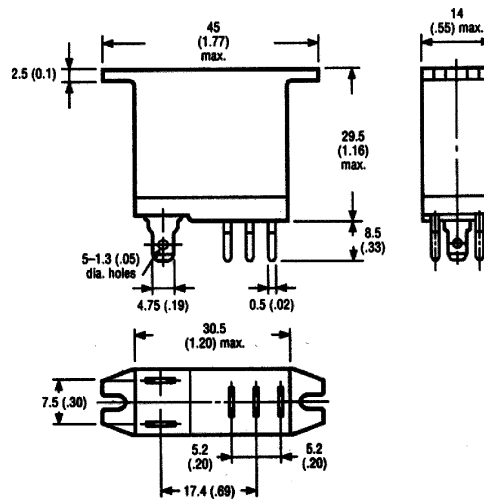


#### Mounting holes (bottom view)

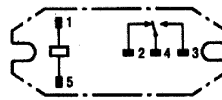


Note: 1. For SPST-NO, high-capacity version, remove terminal nos. 2 and 7.  
2. ■ and □ indicate mounting orientation marks.

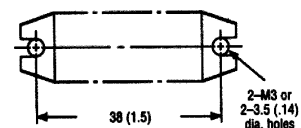
#### Quick Connect: SPDT



#### Terminal arrangement/ Internal connections (bottom view)



#### Mounting holes (bottom view)



Note: 1. For SPST-NO, quick connect version, remove terminal no. 2.