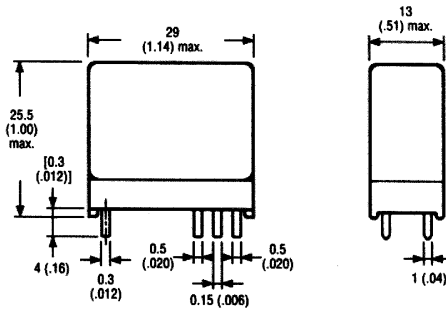


G2R

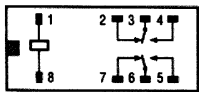
Power PCB Relay

Dimensions [Unit: mm (inch)]

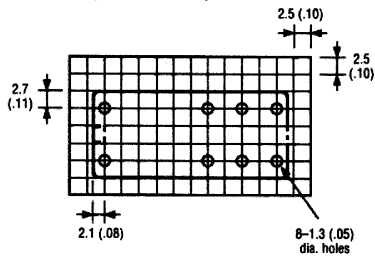
PCB Terminal: DPDT (General Purpose, High Sensitivity)



Terminal arrangement/ Internal connections (bottom view)

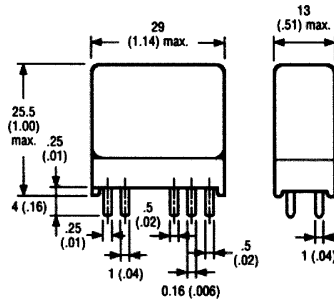


Mounting holes (bottom view)

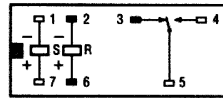


Note: 1. For DPST-NO, general purpose and high-sensitivity versions, remove terminal nos. 2 and 7.
2. ■ and □ indicate mounting orientation marks.

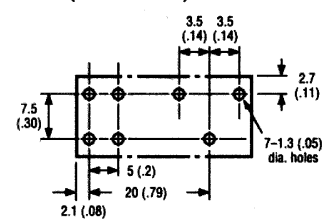
SPDT Dual Coil Latching



Terminal arrangement/ Internal connections (bottom view)

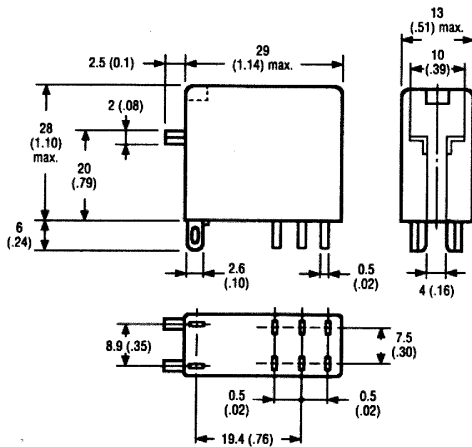


Mounting holes (bottom view)

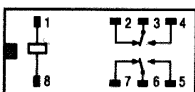


Note: 1. For SPST-NO, latching version, remove terminal no. 3.
2. ■ and □ indicate mounting orientation marks.

Plug-In: DPDT

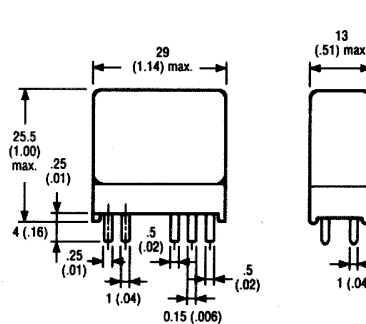


Terminal arrangement/ Internal connections G2R-2-S (bottom view)

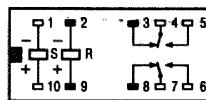


Note: 1. ■ and □ indicate mounting orientation marks.

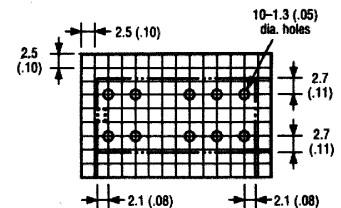
DPDT Dual Coil Latching



Terminal arrangement/ Internal connections G2R-2-S (bottom view)



Mounting holes (bottom view)



Note: 1. For DPST-NO, latching version, remove terminal nos. 3 and 8.
2. ■ and □ indicate mounting orientation marks.