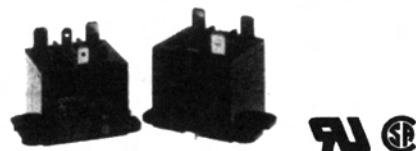


G4B

General Purpose Relay

Features

- Creepage distance of more than .08"
- Upper mounting bracket type for easy wiring and mounting



Contact Data

Contact ratings

SPST-NO/SPDT, Standard: 15 A, 220 VAC, 24 VDC (Resistive); 10 A, 220 VAC, 7 A, 24 VDC (Inductive); 5 A, 120 VAC, Tungsten (TV-5); 1 HP, 120 VAC; 10 A, 277 VAC (Ballast)
SPST-NO/SPDT, High-capacity: 25 A, 220 VAC, 24 VDC (Resistive); 20 A, 220 VAC, 15 A, 24 VDC (Inductive); 2 HP, 250 VAC

Maximum operating voltage 250 VAC, 125 VDC

Maximum operating current

Standard: 20 A
High-capacity: 25 A

Maximum switching capacity

Standard, Resistive: 3,300 VA, 360 W
High-capacity: 5,500 VA, 600 W

Minimum permissible load (Ref. value) 100mA at 5 VDC

Coil Data [% of rated voltage]

Pickup voltage 80% max. (AC and DC)

Dropout voltage 30% min. (AC); 10% min. (DC)

Maximum voltage 110% at 55°C

Characteristic Data

Initial contact resistance 30mΩ max.

Insulation resistance 100MΩ min. (at 500VDC)

Dielectric strength 2,000 VAC, 50/60 Hz for 1 minute
Between non-continuous contacts: 1,000 VAC

Service life

Mechanical: 10,000,000 operations min.

Electrical: Standard - 200,000 operations min. at 15 A, 220 VAC, 24 VDC

High-capacity - 100,000 operations min. at 25 A, 220 VAC, 24 VDC

Construction Data

Termination PC board terminals or quick-connect terminals

Weight 1.55 oz. (44 g)

Packaging method Trays

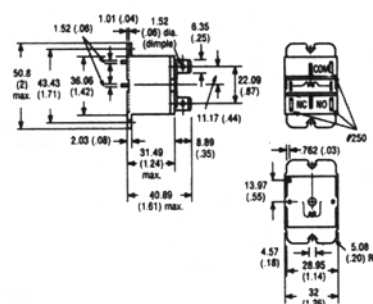
Ordering Information

Part number	Rated voltage (V)	Coil res. (Ohms)	Power	Contact rating	Type
G4B-112T-C-US -DC12	12 DC	135	1.2 W	15 A	SPDT
-DC24	24 DC	480	1.2 W	15 A	Standard
-AC24	24 AC	—	1.3 VA	15 A	Quick
-AC120	120 AC	—	1.3 VA	15 A	Connect #110 Coil Terminals
G4B-112TI-C-US -DC12	12 DC	135	1.2 W	15 A	SPDT
-DC24	24 DC	480	1.2 W	15 A	Standard
-AC24	24 AC	—	1.3 VA	15 A	Quick
-AC120	120 AC	—	1.3 VA	15 A	Connect #187 Coil Terminals
G4B-112TP-C-US -DC12	12 DC	135	1.2 W	15 A	SPDT
-DC24	24 DC	480	1.2 W	15 A	Standard
-AC24	24 AC	—	1.3 VA	15 A	PCB Coil
-AC120	120 AC	—	1.3 VA	15 A	Terminals
G4B-112T-FD-C-US-RP -DC12	12 DC	135	1.2 W	25 A	SPDT
-DC24	24 DC	480	1.2 W	25 A	High Capacity
-AC24	24 AC	—	1.3 VA	25 A	Quick
-AC120	120 AC	—	1.3 VA	25 A	Connect #110 Coil Terminals
G4B-112TI-FD-C-US-RP -DC12	12 DC	135	1.2 W	25 A	SPDT
-DC24	24 DC	480	1.2 W	25 A	High Capacity
-AC24	24 AC	—	1.3 VA	25 A	Quick
-AC120	120 AC	—	1.3 VA	25 A	Connect #187 Coil Terminals
G4B-112TP-FD-C-US-RP -DC12	12 DC	135	1.2 W	25 A	SPDT
-DC24	24 DC	480	1.2 W	25 A	High Capacity
-AC24	24 AC	—	1.3 VA	25 A	PCB Coil
-AC120	120 AC	—	1.3 VA	25 A	Terminals

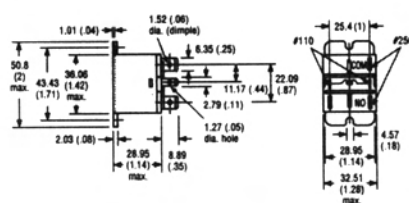
Note: 1. For SPST-NO version, delete "C" in the part number.
 2. Other coil voltages available.

Dimensions [Unit: mm (inch)]

PCB Coil Terminals



Quick Connect #110 Coil Terminals



Quick Connect #187 Coil Terminals

