

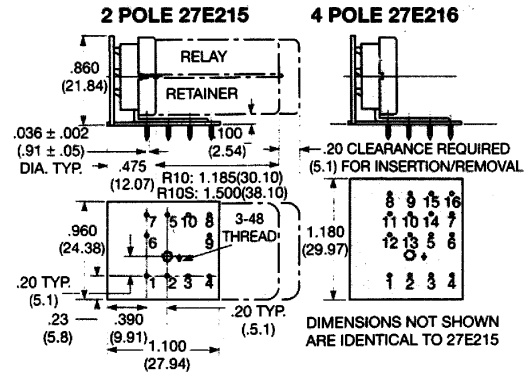
R10 SOCKET & ACCESSORY INFORMATION (CONTINUED)

ORDERING DATA - Stock items are boldfaced.

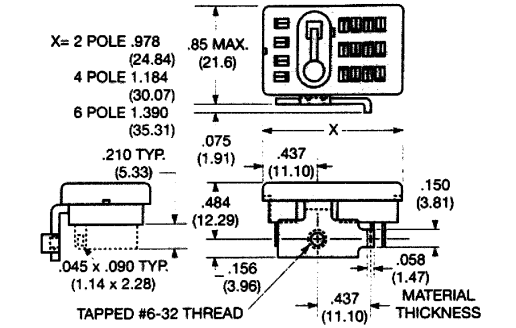
Socket Part No.		No. of Poles	Type of Terminal	Grounding Provision
Tin Plated	Gold Flashed			
27E215	27E732	2	PC Rt. Angle	Yes
—	27E734			



PC RIGHT ANGLE SOCKET
Allows relay to mount flat on PC board and reduces height from 1.720" (43.69 mm) to .860" (21.84 mm). 1A max. rating.

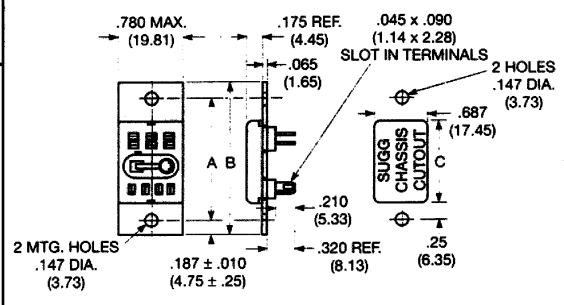


BRACKET MOUNT SOCKET
Allows solder terminal relay to mount flat on a chassis.



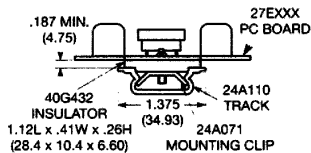
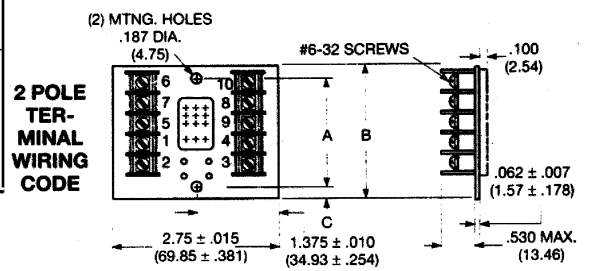
FLANGE MOUNT SOCKET
Solder terminal socket with tin-plated terminals and grounding strip pre-assembled on .065" (1.65 mm) steel mounting plate. Requires only one chassis cutout.

Part No.	No. of Poles	Dim. A Nom.	Dim. B Max.	Dim. C Min.
27E446	2	1.437 (36.50)	1.822 (46.27)	.937 (23.80)
27E447	4	1.687 (42.85)	2.072 (52.63)	1.125 (28.58)
27E448	6	1.875 (47.63)	2.260 (57.40)	1.343 (34.11)

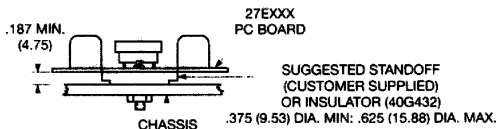


TRACK MOUNT SOCKET
Provides front wiring, screw terminal connections for R10 family relays. No grounding provision.

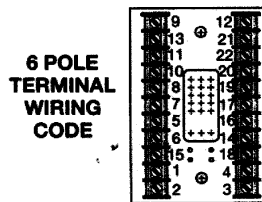
Part No.	No. of Poles	Dim. A Nom.	Dim. B Max.	Dim. C Nom.
27E460	2	1.800 (45.72)	2.230 (56.64)	.200 (5.08)
27E461	4	2.125 (53.98)	2.830 (71.88)	.337 (8.56)
27E462	6	2.812 (71.42)	3.830 (97.28)	.494 (12.55)



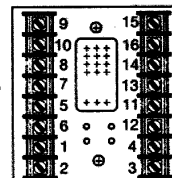
SUGGESTED TRACK MOUNTING



SUGGESTED CHASSIS MOUNTING



6 POLE TERMINAL WIRING CODE



4 POLE TERMINAL WIRING CODE