

SOCKETS FOR KU SERIES RELAYS THROUGH 3 POLES

SOCKET SELECTION TABLE
Stock items are boldfaced.

For KUP, KUEP, KUGP, KUIP, and KUMP relays, through 3 poles, with .187" (4.75 mm) quick connect termination.

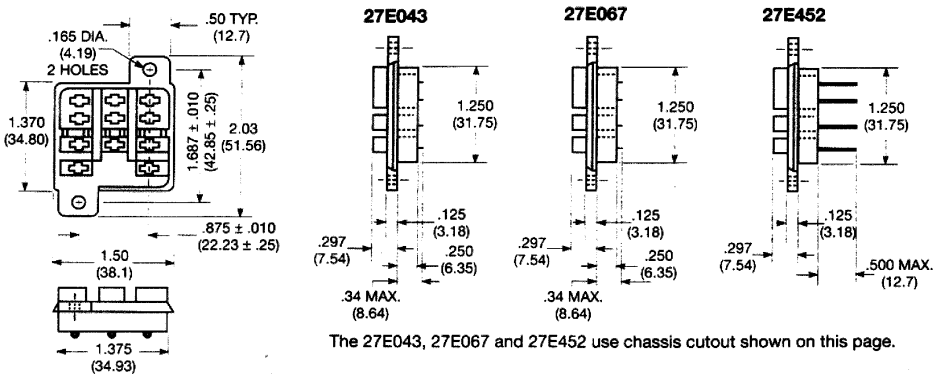
SOCKET	SOCKET TERMINATION	HOLD-DOWN SPRING
27E043	Solder eyelet	20C228 or 20C254*
27E046	PC board, .144" (3.66 mm) terminals	20C228 or 20C254
27E067	.187" (4.75 mm) quick connect	20C228 or 20C254
27E121	Screw terminals	20C314 (2 per socket required)
27E305	PC board, .184" (4.67 mm) terminals	20C228 or 20C254
27E396	.187" (4.75 mm) quick connect*	20C254
27E893	Screw terminals†	20C318

* 20C228 held in place by socket hold-down screw where as 20C254 snaps onto socket.
** Snap-in mounting.
† DIN rail mounting.

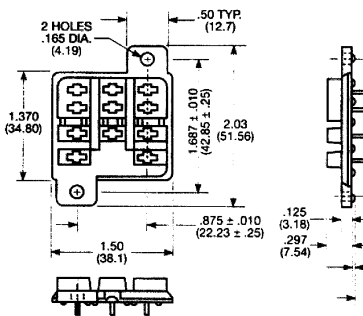
HARD MOUNT SOCKETS FOR RELAYS THROUGH 3 POLES

Nylon sockets with .187" (4.75 mm) quick connect, solder, printed circuit, wire wrap or no terminals are available for KUEP, KUGP, KUIP, KUMP, and KUP relays, through 3 poles, with .187" (4.75 mm) quick connect terminals. All are rated 15 amps and UL recognized, File E59244 and CSA certified File LR15734 (except 27E452, 10 amps).

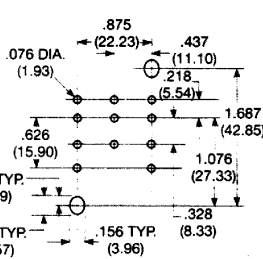
- 27E043—with solder eyelet terminals.
- 27E067—with .187" (4.75 mm) quick connect terminals
- 27E452—with .032" (.81 mm) x .062" (1.57 mm) x .725" (18.42 mm) terminals for wire wrapping. Use 20 to 26 gauge wire depending on type of wrapping system.



27E046, 27E305, 27E310
SOCKET WITH PRINTED CIRCUIT TERMINALS



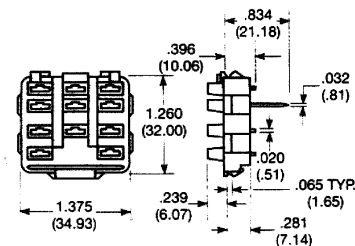
SUGGESTED SOCKET
PC BOARD LAYOUT



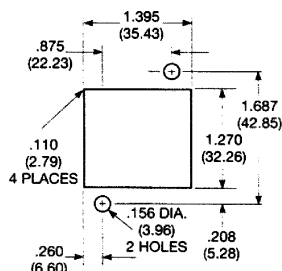
SNAP-IN SOCKETS FOR RELAYS THROUGH 3 POLES

Nylon snap-in sockets with .187" (4.75 mm) quick connect, solder, or wire wrap terminals are available for KUEP, KUGP, KUIP, KUMP, and KUP relays, through 3 poles, with .187" (4.75 mm) quick connect terminals. Snap-in sockets reduce labor by eliminating time consuming screw or rivet mounting. Preassembled wiring harnesses may also be used as the sockets are designed to snap into the chassis from either front or back. All are rated 15 amps and UL recognized, File E59244. The 27E396, 27E397 and 27E400 use chassis cutout shown on this page.

- 27E396—with .187" (4.75 mm) quick connect terminals.



RECOMMENDED CHASSIS CUTOUT
FOR HARD MOUNT SOCKETS



RECOMMENDED CHASSIS CUTOUT
FOR SNAP-IN SOCKETS

