

**PHASE SEQUENCE & LOSS MONITOR/RELAYS
SLA - SERIES**

Any system using 3 phase motors needs Phase Monitor protection. These monitors operate independently of motor size or power requirement of the system. When the phase sequence is correct and full line voltage is present on all three phases, the internal relay picks up. When incorrect phase sequence or phase loss occurs or the line voltages fall below the trip point, the relay drops out. Both DELTA and WYE systems may be monitored. In WYE systems, connections to neutral are not required. The LED's glow when all conditions are normal. *NOTE: WHEN A PHASE IS LOST WHILE THE MOTOR IS RUNNING, A CONDITION KNOWN AS REGENERATION OCCURS WHERE A VOLTAGE IS INDUCED INTO THE OPEN PHASE NEARLY EQUAL IN MAGNITUDE TO THE NORMAL PHASE-TO-PHASE VOLTAGE. HOWEVER, WITH THE EXCEPTION OF LIGHTLY LOADED MOTORS, ENOUGH CHANGE IS DETECTED BY THE SLA TO PROVIDE THE REQUIRED PROTECTION WHEN PROPERLY ADJUSTED. PATENT #3,611,050*

VOLTAGE: All Voltages Referenced Are
Phase-to-Phase, 50/60 Hz

ENCLOSURES

- A: Plug In; 1.75" x 2.375" x 3.0"H
- E: Surface Mounted; 4.0" x 4.0" x 3.0"H
- N: Surface Mounted; 3.7" x 2.18" x 1.5"H

DROP OUT:

- 1 ∅ Low: 83% of Setting
- 3 ∅ Low: 90% of Setting

MODEL NUMBER	OPERATING VOLTAGE	DROP OUT		PIN CONFIGURATION	AGENCY APPROVAL	LED	RESET	ENCLOSURE STYLE
		1 ∅ LOW	3 ∅ LOW					
SLA-120-ASA	95-130 Adj	79-108	85-117	Figure 1	• & CSA	Yes	Auto	A
SLA-230-ASA	190-270 Adj	158-224	171-243	Figure 1	• & CSA	Yes	Auto	A
SLA-440-ASA	430-480 Adj	378-461	410-500	Figure 1	---	Yes	Auto	A
SUA-120-ALA	95-130 Adj	79-108	85-117	Figure 1	• & CSA	Yes	Auto	A
SUA-230-ALA	190-270 Adj	158-224	171-243	Figure 1	• & CSA	Yes	Auto	A
SUA-440-ASA	430-480 Adj	378-461	410-500	Figure 1	• & CSA	Yes	Auto	A
*SUA-120-ALAU	95-130 Adj	79-108	85-117	Figure 1	▲ & CSA	Yes	Auto	A
*SUA-230-ALAU	190-270 Adj	158-224	171-243	Figure 1	▲ & CSA	Yes	Auto	A
SLA-120-ALA	95-130 Adj	79-108	85-117	Figure 2	---	No	Auto	A
SLA-230-ALA	190-270 Adj	158-224	171-243	Figure 2	---	No	Auto	A
SLA-120-ALE	95-130 Adj	79-108	85-117	Figure 3	▲ & CSA	Yes	Auto	E
SLA-230-ALE	190-270 Adj	158-224	171-243	Figure 3	▲ & CSA	Yes	Auto	E
SLA-380-ALE	350-440 Adj	290-365	315-396	Figure 3	▲ & CSA	Yes	Auto	E
SLA-440-ALE	430-480 Adj	357-398	387-432	Figure 3	▲ & CSA	Yes	Auto	E
SLA-575-ALE	525-625 Adj	436-519	473-563	Figure 3	▲ & CSA	Yes	Auto	E
SLA-120-ALER	95-130 Adj	79-108	85-117	Figure 3	▲ & CSA	Yes	Manual	E
SLA-230-ALER	190-270 Adj	158-224	171-243	Figure 3	▲ & CSA	Yes	Manual	E
SLA-380-ALER	350-440 Adj	290-365	315-396	Figure 4	▲ & CSA	Yes	Manual	E
SLA-440-ALER	430-480 Adj	357-398	387-432	Figure 4	▲ & CSA	Yes	Manual	E
SLA-120-AFN	120	100	108	Figure 5	•	No	Auto	N
SLA-208-AFN	208	173	187	Figure 5	•	No	Auto	N
SLA-220-AFN	220	183	198	Figure 5	•	No	Auto	N
SLA-230-AFN	230	191	207	Figure 5	•	No	Auto	N
SLA-240-AFN	240	199	216	Figure 5	•	No	Auto	N

*UL LISTED ONLY WHEN USED WITH RB-08 SOCKET

NOTE: ALL MODELS AVAILABLE WITH FIXED OPERATING VOLTAGES.

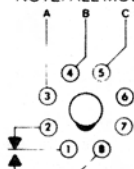


FIGURE 1

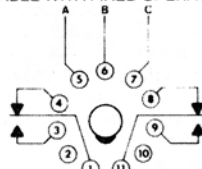


FIGURE 2

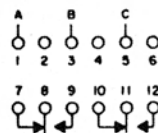


FIGURE 3

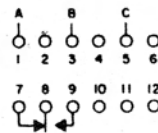


FIGURE 4

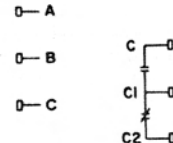


FIGURE 5

- UL Recognized
- ▲ UL Listed

FILE NUMBERS
UL: E55826
CSA: LR40123

