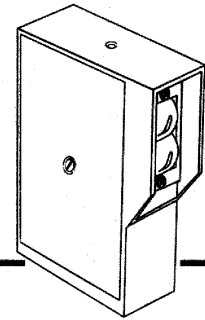


Heavy Duty

Photoelectric Sensors

Diffuse Proximity



- **Modulated LED**
- **Choice of Outputs**
- **Diecast Aluminum Housing Epoxy Coated**
- **Tri-Color LED Indicator**
- **Optional Plug-In Time Delays**
- **NEMA 3, 4, 12 & 13 Design**
- **-20°C to +70°C**

These beefed-up sensors are smart as well as tough. Die cast aluminum housings and totally sealed optics help make them ideal for severe environments. All models use a modulated infrared LED emitter and

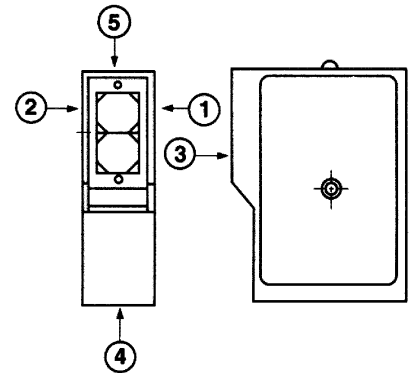
receiver to ignore ambient light. Plug-in time delay modules offer wide flexibility in application options.

Designed for harsh industrial environments, the EP100 Series is especially equipped to alert you to potential problems. When other sensors run into alignment or dirty optic problems, you don't know about it until they fail. The EP100 uses a unique "tri-color" LED to indicate impending problems. When the LED glows:

- Green — stable operation
>70% reflected signal strength
- Yellow — marginal operation
40-70% reflected signal strength
- Red — insufficient reflected signal

Target Repeatability

For best repeatability, it is recommended to have target travel in direction (1) or (2). Traveling toward lens (3) will result in slightly higher tolerance on switch point. It is not recommended to have target travel in direction (4) and (5).



Supply Voltage	Power Consumption	Output Circuit Type	Fixed Range			Adjustable Range	Output Rating	Response Time	Maximum Switching Frequency	Leakage Current
			1.0'	2.5'	6.5'					
RELAY OUTPUTS										
120 VAC	1.0 VA	DPDT	EP130-12003*	EP130-12002*	EP130-12001*	—	5A Resistive @ 250 VAC or 30 VDC	20mS/25ms	25 Hz	—
11-30 VDC	70 mA	DPDT	EP130-15003	EP130-15002	EP130-15001	—	5A Resistive @ 250 VAC or 30 VDC	20mS/25ms	25 Hz	—
110/220 VAC	4.0 VA	SPDT	—	—	—	EP130-12004	50 W - 250 VDC 60 VA - 250 VAC	70mS	7 Hz	—
11-30 VDC ± 10%	90 mA	SPDT	—	—	—	EP130-15004	50 W-250 VDC 60 VA - 250 VAC	70mS	7 Hz	—
TRANSISTOR OUTPUTS										
120 VAC	1.0 VA	NPN	EP130-12203*	EP130-12202*	EP130-12201*	—	25 mA @ 40 VDC	60mS/10ms	60 Hz	—
11-30 VDC	70 mA	NPN	EP130-15203	EP130-15202	EP130-15201	—	25 mA @ 40 VDC	60mS/10ms	60 Hz	—
11-30 VDC ± 10%	90 mA	PNP	—	—	—	EP130-15004	100mA	70mS	7 Hz	—
TRIAC OUTPUTS										
120 VAC	1.0 VA	SPST	EP130-12903*	EP130-12902*	EP130-12901*	—	.05-1.5 A @ 90-240 VAC	6mS/40ms	20 Hz	5mA
11-30 VDC	70 mA	SPST	EP130-15903	EP130-15902	EP130-15901	—	.05-1.5 A @ 90-240 VAC	6mS/40ms	20 Hz	5mA

* UL Listed and CSA Approved