

PE90/PM90 SERIES



19

FILTERS

FEATURES

- RFI Filter Module Combines IEC Connector, Fusing, Voltage Select and On/Off Switch into a single, space-efficient assembly.
- PE90 Series Filters Provide 20% More Differential Mode Attenuation than Comparable Units.
- Accepts Either U.S. or European Standard Fuse Sizes.
- PM90 Meets UL 544 Specification for Medical and Dental Equipment.

SPECIFICATIONS

Rated Voltages: 250VAC Max., 50/60 Hz.
Rated Current at: 115VAC, 3A and 6A, 250VAC, 3A and 6A
Maximum Operating Ambient Temperature at Rated Current: 40° C.

Humidity Range: 0.95% R.H.

Insulation Resistance: 9×10^9 ohms at 100VDC

Maximum Leakage Current

Each Line to Ground –	PE90	PM90
at 115VAC, 60 Hz.:	0.25mA	0.002mA
at 250VAC, 50 Hz.:	0.40mA	0.005mA

Hipot Test (one minute) –

Line to Ground:	1500VAC	1500VAC
Line to Line:	1450VDC	1450VDC

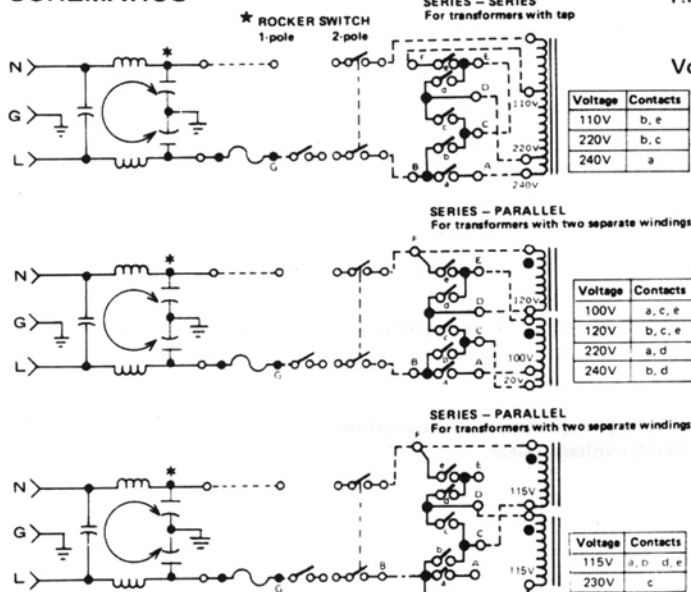
Voltage Select Card: Installed in 120VAC position unless otherwise specified.

SAFETY AGENCY RECOGNITION/APPROVALS

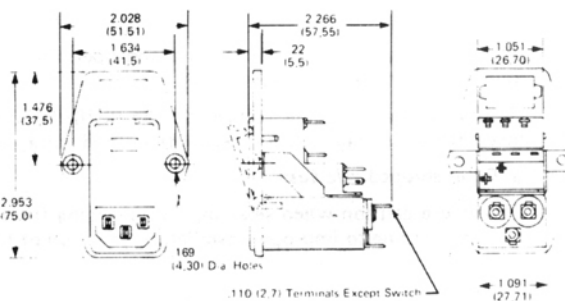


All Units are Approved under VDE
 File No. 11722-4730-1012.

SCHEMATICS



PE PM90 SCREW-MOUNT SERIES



* L/G Capacitors are removed and L/L Capacitor is shifted to load side on all PM Series.

Nominal Current Rating	Part Number	Termination Line/Load	MINIMUM INSERTION LOSS – dB (50 ohm Circuit)						
			MODE	Frequency – MHz					
				15	0.5	1.0	5.0	10	30
3A	PE9XXX03	IEC/Solder Tabs	Common	18	24	30	45	45	50
	PM9XXX03	IEC/Solder Tabs	Differential	8	18	24	46	50	40
6A	PE9XXX06	IEC/Solder Tabs	Common	14	20	22	24	22	15
	PM9XXX06	IEC/Solder Tabs	Differential	8	18	24	32	30	30
6A	PE9XXX06	IEC/Solder Tabs	Common	10	19	24	39	44	50
	PM9XXX06	IEC/Solder Tabs	Differential	8	18	24	39	40	40
6A	PE9XXX06	IEC/Solder Tabs	Common	10	15	18	18	18	15
	PM9XXX06	IEC/Solder Tabs	Differential	8	18	24	32	28	25