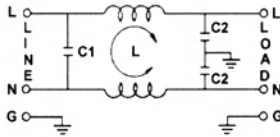
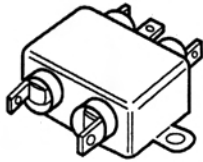




851 Series General Purpose Filters

A compact general purpose filter designed to provide effective EMI suppression which can be used in a wide variety of electrical and electronics equipment.



Mfg.'s No.	Similar to Corcom	Amp Rating	Size Lx W x H
851-02/001	2VB1/2EB1	2	2.15 x 1.77 x 0.65
851-03/003	3VB1/3EB1	3	2.54 x 1.77 x 0.79
851-03/004*	3VB3/3EB3	3	0.96 x 1.77 x 0.65
851-05/005	5VB1/3EB1	5	2.54 x 1.77 x 0.79
851-05/006*	5VB3/5EB3	5	1.33 x 1.77 x 0.79
851-10/007	10VB1/10EB1	10	2.54 x 1.77 x 1.18
851-10/009**	10VB6	10	3.10 x 2.04 x 1.18
851-20/011**	20VB6	20	3.37 x 2.04 x 1.15

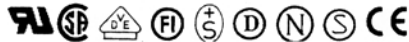
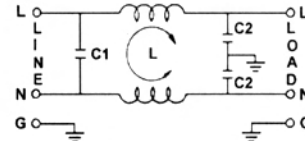
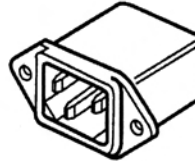
* Leads Without Fastons. ** Stud Terminals Without Fastons.

857 Series Compact IEC General Purpose Filters

A compact and reliable general purpose IEC connector filter designed to provide effective EMI filtration at a low price.

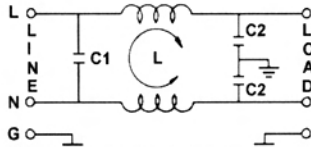
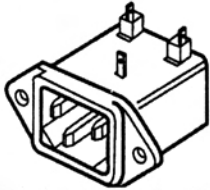


Mfg.'s No.	Similar to Corcom	Amp Rating	Size Lx W x H
857-01/005	1EEA1/1EF1F	1	2.10 x 1.12 x 0.84
857-03/017	3EEA1/3EF1F	3	2.10 x 1.12 x 0.84
857-06/027	6EEA1/6EF1F	6	2.10 x 2.05 x 0.84
857-10/033	10EEA1/10EF1F	10	2.10 x 2.05 x 0.84



857 Series Right Angle IEC General Purpose Filters

A compact purpose right angle IEC connector filter designed to provide effective EMI suppression and easy installation.

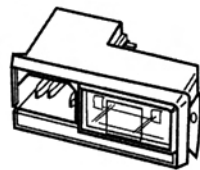
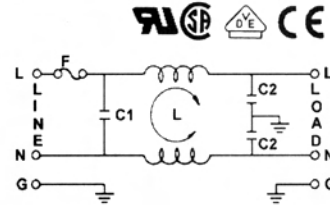
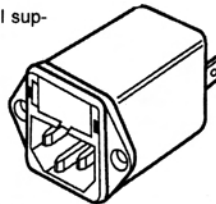


Mfg.'s No.	Similar to Corcom	Amp Rating	Size Lx W x H
857-01/046	1EF2	1	1.50 x 1.22 x 1.02
857-03/047	3EF2	3	1.50 x 1.22 x 1.02
857-06/048	6EF2	6	1.50 x 1.22 x 1.02
857-10/049	-----	10	1.50 x 1.22 x 1.02

860 Series Fused General Purpose Filters

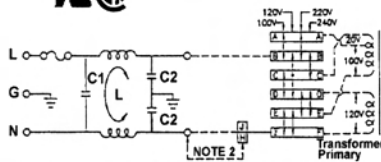
A general purpose filter with a fused IEC connector providing effective EMI suppression of both common and differential mode noise.

Mfg.'s No.	Similar to Corcom	Amp Rating	Size L x W x H
860-02/001	-----	2	2.56 x 1.14 x 1.29
860-04/002	-----	4	2.56 x 1.14 x 1.29
860-04/003	-----	4	2.56 x 1.14 x 1.29
860-06/005	-----	6	2.56 x 1.14 x 1.29



861 Series Multi-Function Module Filter

A multi-function power entry module filter that incorporates an IEC connector, a single fuse holder and a voltage selector switch providing space savings.



Mfg.'s No.	Similar to Corcom	Amp Rating	Size Lx W x H
861-06/001	6J4	6	1.17 x 2.68 x 1.87

862 Series Multi-Function Module Filters

A multi-function power entry module filter that incorporates an IEC connector, a fuse holder with optional power On/Off switch, and voltage selector switch.

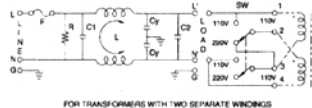


Fig. B

862-06/001 Without Power Switch



Fig. A



FOR TRANSFORMERS WITH TWO SEPARATE WINDINGS

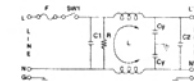
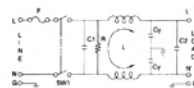


Fig. C



Mfg.'s Type	Electrical Schematic	Amp Rating 115-250	Size L X W X H	IEC Conn	Fuse Holder	Power Switch	Voltage Selector
862-06/001	B	6-6	2.65 x 2.24 x 1.15	Yes	Yes	No	No
862-06/002	B	6-6	2.65 x 2.38 x 1.15	Yes	Yes	SP	No
862-06/003	C	6-4	2.65 x 2.38 x 1.15	Yes	Yes	DP	No
862-06/007	A	6-6	2.65 x 2.24 x 1.15	Yes	Yes	No	Yes