

# ADAM TECH



POWER LINE FILTERS

Adam Tech's EMI/RFI Power Line Filters are designed to block the incoming and outgoing interference of high-frequency signals. This allows devices to run without interruption. This broad product line offers a voltage rating of 115/250VAC, and current ratings ranging from 1A to 20A. A variety of options are available, including outline, mounting, termination, and switches.

## FEATURES AND BENEFITS:

- Line filter type
- Flanged panel or chassis mount
- 115/250VAC voltage rating
- Current ratings ranging from 1 to 20 Amps
- Fused option
- Switch option
- Various termination options including quick connect, wire leads, terminal block, and screw
- Ideal for switching power supplies
- Prevents electromagnetic interference signals from reaching the input power line or the equipment
- UL Recognized

## APPLICATIONS:

- Industrial
- Medical
- Consumer goods
- Computer and networking equipment
- Test and measurement equipment
- Switching power supplies

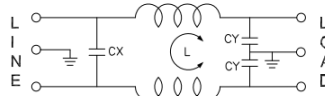


The products displayed in this brochure represent the various types of Power Line Filters Adam Tech has to offer. Each part is available in other variations, such as with different current ratings and fuse options. Additional **medical grade** filters are also available. Please contact us with any inquiries.

## PLF-11A1-6A-Q



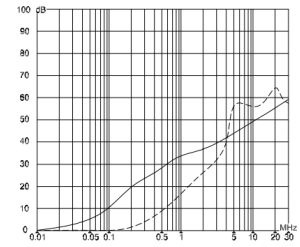
IEC Inlet Socket  
QD Terminals, Flange Mount  
115/250VAC, 6A



L:2x0.8mH  
Cx:0.1uF(X2)  
Cy:3300pF(Y2)

[VIEW FULL DATASHEET](#)

### INSERTION LOSS



— Common Mode  
- - - Differential Mode

## PLF-11A1-10A-Q



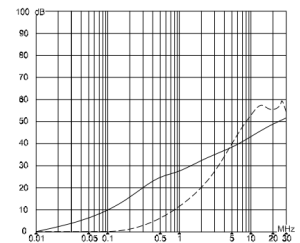
IEC Inlet Socket  
QD Terminals, Flange Mount  
115/250VAC, 10A



L:2x0.3mH  
Cx:0.1uF(X2)  
Cy:3300pF(Y2)

[VIEW FULL DATASHEET](#)

### INSERTION LOSS

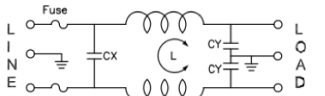


— Common Mode  
- - - Differential Mode

## PLF-11B2-6A-Q-R5



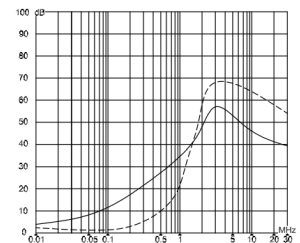
Medical Grade  
Fused IEC Inlet Socket  
QD Terminals, Flange Mount  
115/250VAC, 6A



L:2x0.3mH  
Cx:0.1uF(X2)  
Cy:3300pF(Y2)\*2

[VIEW FULL DATASHEET](#)

### INSERTION LOSS

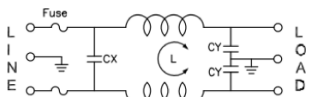


— Common Mode  
- - - Differential Mode

## PLF-11B2-10A-Q



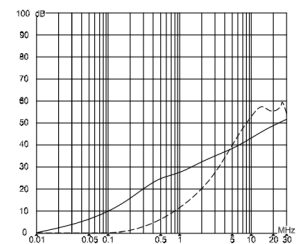
Fused IEC Inlet Socket  
QD Terminals, Flange Mount  
115/250VAC, 10A



L:2x0.3mH  
Cx:0.1uF(X2)  
Cy:3300pF(Y2)\*2

[VIEW FULL DATASHEET](#)

### INSERTION LOSS

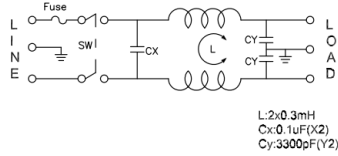


— Common Mode  
- - - Differential Mode

## PLF-11C1-10A-Q

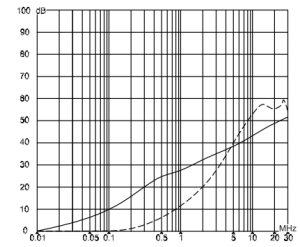


Power Entry Module  
Fuse and Switch  
Horizontal Flange Mount  
115/250VAC, 10A



[VIEW FULL DATASHEET](#)

### INSERTION LOSS

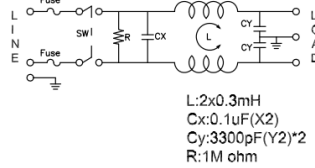


— Common Mode  
- - - Differential Mode

## PLF-11C4-10A-Q-R

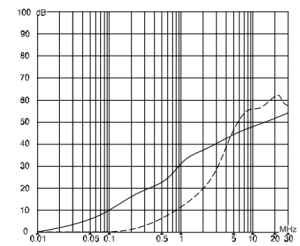


Power Entry Module  
Fuse and Switch  
Vertical Flange Mount  
115/250VAC, 10A



[VIEW FULL DATASHEET](#)

### INSERTION LOSS

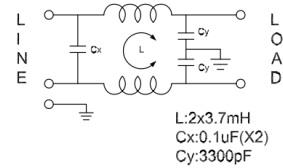


— Common Mode  
- - - Differential Mode

## PLF-11E1-1A-W

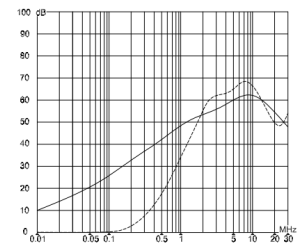


Medium Performance  
Wire Leads w/ Ring Terminal  
Chassis Mount  
115/250VAC, 1A



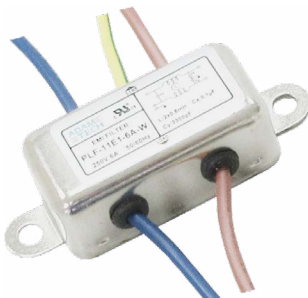
[VIEW FULL DATASHEET](#)

### INSERTION LOSS

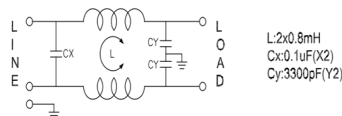


— Common Mode  
- - - Differential Mode

## PLF-11E1-6A-W

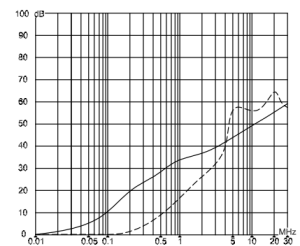


Medium Performance  
Wire Leads, Chassis Mount  
115/250VAC, 6A



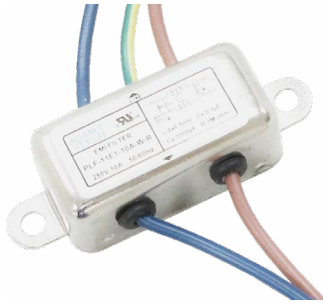
[VIEW FULL DATASHEET](#)

### INSERTION LOSS

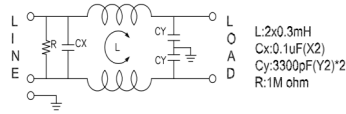


— Common Mode  
- - - Differential Mode

## PLF-11E1-10A-W-R

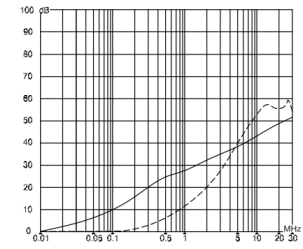


Medium Performance  
Wire Leads, Chassis Mount  
115/250VAC, 10A



[VIEW FULL DATASHEET](#)

### INSERTION LOSS

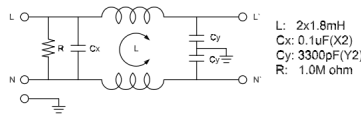


— Common Mode  
- - - Differential Mode

## PLF-11E3-6A-Q-R

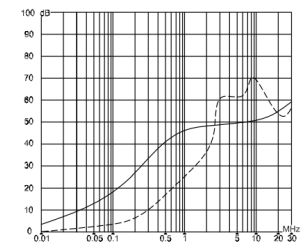


Medium Performance  
QD Terminals, Chassis Mount  
115/250VAC, 6A



[VIEW FULL DATASHEET](#)

### INSERTION LOSS

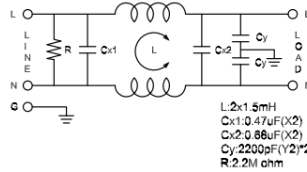


— Common Mode  
- - - Differential Mode

## PLF-12D2-3A-Q-R

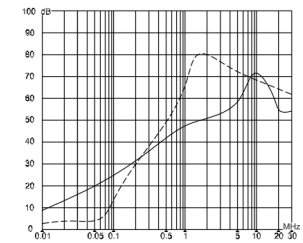


Medium Performance  
QD Terminals, Chassis Mount  
115/250VAC, 3A



[VIEW FULL DATASHEET](#)

### INSERTION LOSS

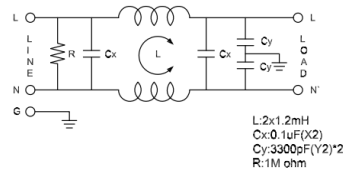


— Common Mode  
- - - Differential Mode

## PLF-12D2-10A-Q-R

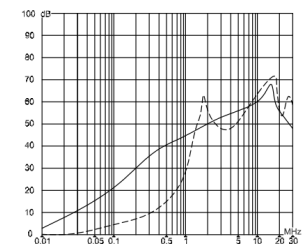


Medium Performance  
QD Terminals, Chassis Mount  
115/250VAC, 10A



[VIEW FULL DATASHEET](#)

### INSERTION LOSS

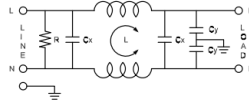


— Common Mode  
- - - Differential Mode

## PLF-12D4-20A-Q-R



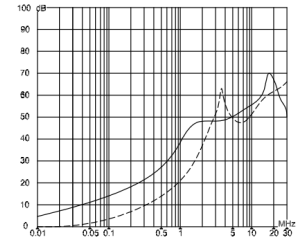
Medium Performance  
QD Terminals, Chassis Mount  
115/250VAC, 20A



L: 2x0.9mH  
Cx: 0.1uF(X2)  
Cy: 3300pF(Y2)  
R: 2.2M ohm

[VIEW FULL DATASHEET](#)

### INSERTION LOSS

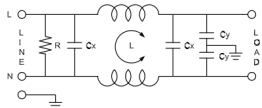


— Common Mode  
- - - Differential Mode

## PLF-12E4-10A-Q-R



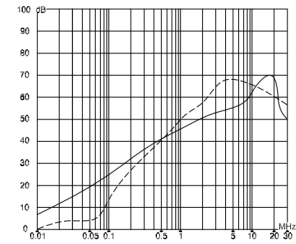
Medium Performance  
QD Terminals, Chassis Mount  
115/250VAC, 10A



L: 2x1.2mH  
Cx: 0.22uF(X2)  
Cy: 3300pF(Y2)  
R: 2.2M ohm

[VIEW FULL DATASHEET](#)

### INSERTION LOSS

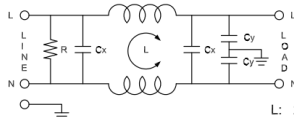


— Common Mode  
- - - Differential Mode

## PLF-12E4-20A-S-R



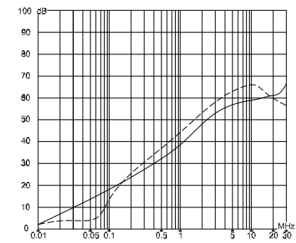
Medium Performance  
Screw Terminals, Chassis Mount  
115/250VAC, 20A



L: 2x0.7mH  
Cx: 0.22uF(X2)  
Cy: 3300pF(Y2)  
R: 2.2M ohm

[VIEW FULL DATASHEET](#)

### INSERTION LOSS

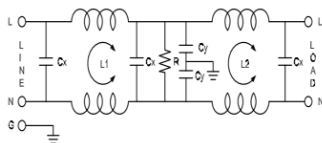


— Common Mode  
- - - Differential Mode

## PLF-21D3-10A-Q



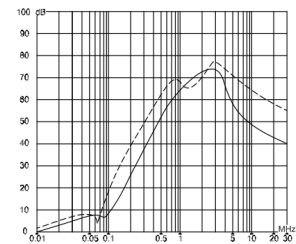
High Performance, Dual Stage  
QD Terminals, Chassis Mount  
115/250VAC, 10A



L1/2: 2x0.6mH  
Cx: 0.1uF(X2)  
Cy: 4700pF(Y2)\*2  
R: 2.2M ohm

[VIEW FULL DATASHEET](#)

### INSERTION LOSS

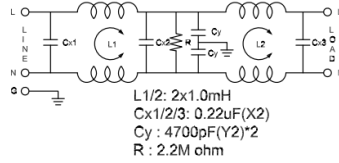


— Common Mode  
- - - Differential Mode

## PLF-21D5-20A-T

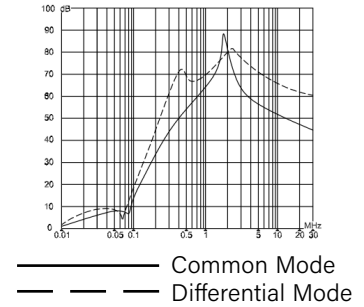


High Performance, Dual Stage  
Terminal Block, Chassis Mount  
115/250VAC, 20A



[VIEW FULL DATASHEET](#)

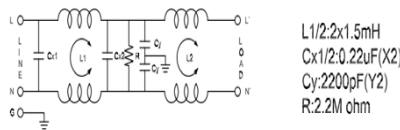
### INSERTION LOSS



## PLF-22D1-6A-W

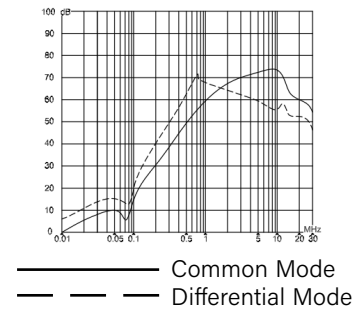


High Performance, Dual Stage  
Wire Leads, Chassis Mount  
115/250VAC, 6A



[VIEW FULL DATASHEET](#)

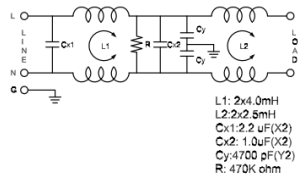
### INSERTION LOSS



## PLF-22D6-20A-Q

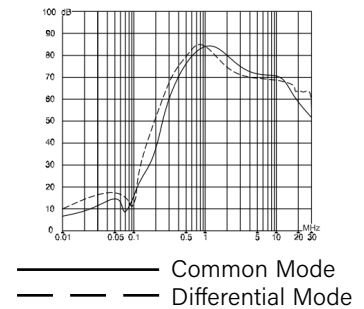


High Performance, Dual Stage  
QD Terminals, Chassis Mount  
115/250VAC, 20A



[VIEW FULL DATASHEET](#)

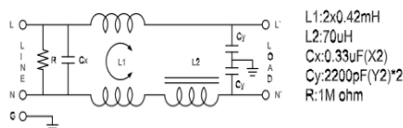
### INSERTION LOSS



## PLF-27D1-3A-W

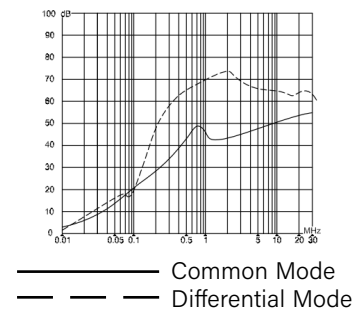


High Performance, Dual Stage  
Wire Leads, Chassis Mount  
115/250VAC, 3A



[VIEW FULL DATASHEET](#)

### INSERTION LOSS



# ADAM TECH

## ADAM TECH USA

(WORLDWIDE HQ)

909 Rahway Ave.

Union, NJ 07083

U.S.A.

Tel: 908-687-5000

Fax: 908-687-5710

Email: [info@adam-tech.com](mailto:info@adam-tech.com)

## ADAM TECH EUROPE

Marcel Schwob

Karlsruhe, Germany

Email: [info@adam-tech.com](mailto:info@adam-tech.com)

## ADAM TECH SOUTH AMERICA

Cesar Nakajune

Sao Paulo, Brazil

Email: [info@adam-tech.com](mailto:info@adam-tech.com)

## ADAM TECH TAIWAN

9F-3, No. 10, Lane 609, Sec. 5, Chongxin Rd.

Sanchong Dist., New Taipei City 241

Taiwan (R.O.C.)

Tel: 886-2 2999 8028

Fax: 886-2 2999 8062

Email: [info@adam-tech.com](mailto:info@adam-tech.com)

## ADAM TECH CHINA

Yingfeng 1st Road, Dajingtou Community

Dalang Town, Dongguan City

Guangdong Province

China (P.R.C.)

Tel: 886-2 2999 8028

Fax: 886-2 2999 8062

Email: [info@adam-tech.com](mailto:info@adam-tech.com)

To contact us, scan the QR  
code to reach our website  
inquiry form.



[adam-tech.com](http://adam-tech.com)