

3.8mm-travel Push Switches (Push-push Type)

SPED3/SPED4/SPED5 Series

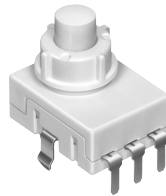
ALPS®

2005
New

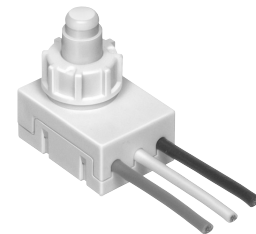
The middle-profile with 3.8mm stroke with noise reduction and linear touch sensation during operation.



SPED3



SPED4



SPED5

Features

- Middle size variety of SPED2 series.
- A variety of mounting styles are available: For use with female connectors, soldering on PC boards, and for use with a wire harness.
- By the adoption of the ratchet cam structure, a smooth, linear operation is obtained.
- Succeeds in reducing the sound from the operation. Contributes to the improvement in conformability of the vehicle interior.
- Easier and faster operation in inspection of the set: 4 pushes in one cycle. (Other existing products need 6-8 pushes.)

Applications

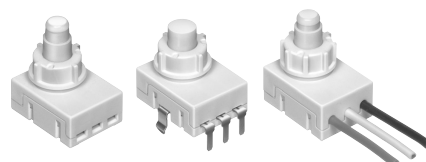
ON/OFF switches for a map lamp in motor vehicles.

Typical Specifications

Item	Specifications		
	SPED3	SPED4	SPED5
Ratings	1A 14.5V DC		
Operating life	30,000cycles		
Circuit arrangement	1pole-2position		
Operating force	4.17±0.74N		
Travel	3.8mm		

3.8mm-travel Push Switches (Push-push Type)

SPED3/SPED4/SPED5 Series



SPED3

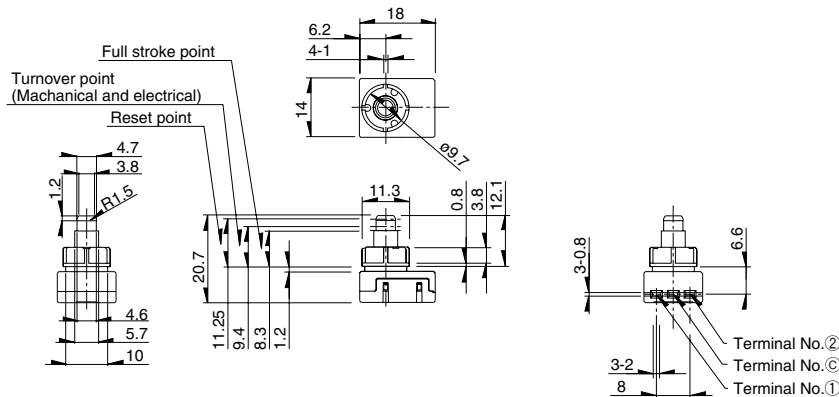
SPED4

SPED5

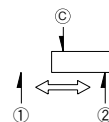
Dimensions

SPED3

Unit:mm



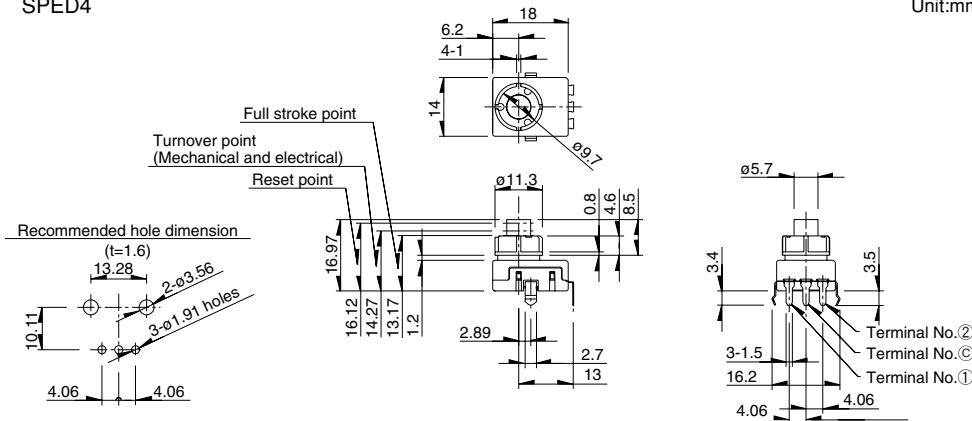
Common Circuit Diagram



Contact shall be positioned
At ① or ② in delivery

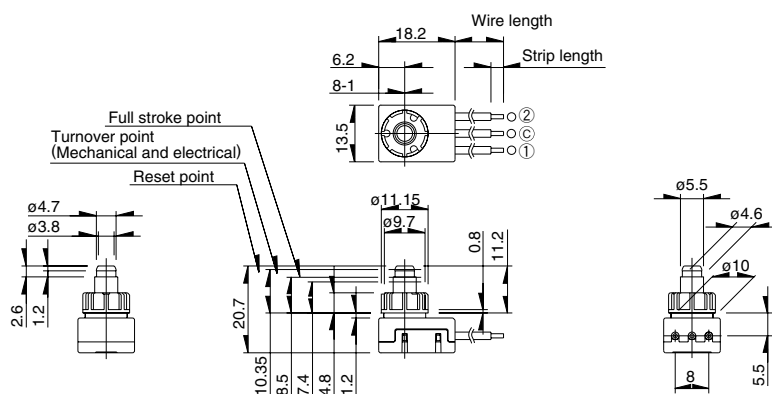
SPED4

Unit:mm



SPED5

Unit:mm



Operating Precautions

1. Unless specifically indicated otherwise, this product has been designed and manufactured for use in ordinary electronic equipment and devices, such as AV equipment, electric home appliances, office machines, and communications equipment. Equipment manufacturers are consequently advised that when these products are planned for equipment that requires a high degree of safety and reliability, especially those apparatuses like medical equipment, aviation and aircraft equipment, space equipment, and burglar alarm equipment, the manufacturers should assure equipment safety by providing protection circuits and redundant circuitry and should fully study the suitability of such products for the intended equipment.
2. Specification indicated in this catalog is outline only. When employing the product, use of an officially authorized specification for supply contract is recommended.
3. The external appearance, performances, and other properties of the product may be changed for improvement without prior notice.
4. Names for products and companies and titles of specifications indicated in this catalogue are mostly trademarks or registered trademarks of their respective owners.
5. Please contact us for any enquiries and queries on our products and their uses.
6. This catalog is valid till the end of December 2005.

Inquiries about Products

Products Information Center +81 (3) 5499-8154
Products Catalog Site <http://www3.alps.co.jp>

ALPS ELECTRIC CO., LTD.

1-7, Yukigaya-otsuka-cho, Ota-ku, Tokyo, 145-8501