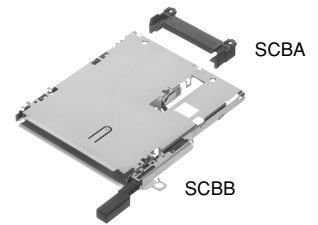


# ExpressCard™ Connector

SCBA/SCBB Series



Light operationality is achieved by a 2-step lever eject mechanism.

## Applications

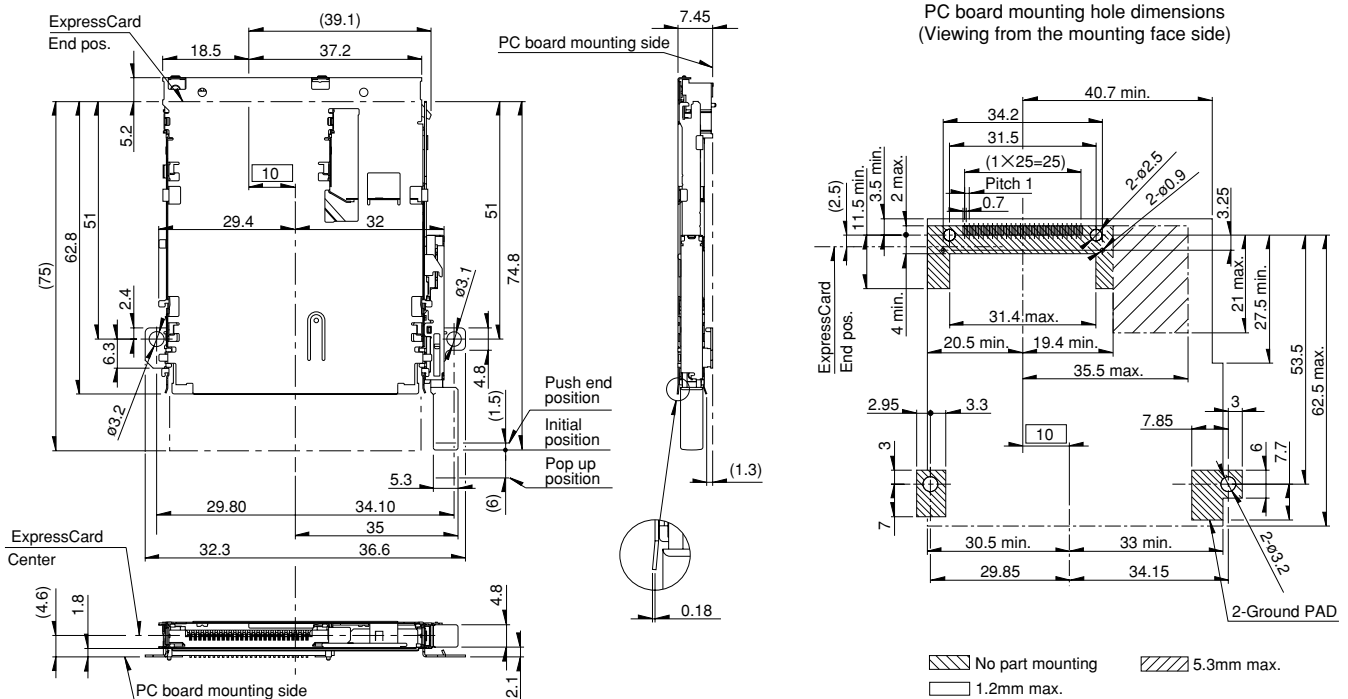
Notebook PCs, desktop PCs, set top boxes, printers, digital cameras, car navigation systems, personal digital assistants, AV equipments, industrial equipments

## Typical Specifications

Items	Specifications	
Structure	Applicable media	ExpressCard™34/54 which confirm to ExpressCard™ standard
	Mounting method	Surface mounting type
	Mounting system	Standard mount
	Contacting pitch	1.0mm
	Number of contacts	26pin
Performance	Operating temperature range	-20°C to +70°C
	Voltage proof	500V AC 1 minute
	Insulation resistance (Initial)	1,000MΩ min.
	Contact resistance (Initial)	120mΩ max.
	Mating and un-mating cycles	5,000cycles

## Dimensions

Unit:mm



## Operating Precautions

- Unless specifically indicated otherwise, this product has been designed and manufactured for use in ordinary electronic equipment and devices, such as AV equipment, electric home appliances, office machines, and communications equipment. Equipment manufacturers are consequently advised that when these products are planned for equipment that requires a high degree of safety and reliability, especially those apparatuses like medical equipment, aviation and aircraft equipment, space equipment, and burglar alarm equipment, the manufacturers should assure equipment safety by providing protection circuits and redundant circuitry and should fully study the suitability of such products for the intended equipment.
- Specification indicated in this catalog is outline only. When employing the product, use of an officially authorized specification for supply contract is recommended.
- The external appearance, performances, and other properties of the product may be changed for improvement without prior notice.
- ExpressCard™ is a trademark of PCMCIA.
- Names for products and companies and titles of specifications indicated in this catalogue are mostly trademarks or registered trademarks of their respective owners.
- Please contact us for any enquiries and queries on our products and their uses.
- This catalog is valid till the end of December 2005.

## Inquiries about Products

Products Information Center +81 (3) 5499-8154  
 Products Catalog Site <http://www3.alps.co.jp>

# ALPS®

ALPS ELECTRIC CO., LTD.  
 1-7, Yukigaya-otsuka-cho, Ota-ku, Tokyo, 145-8501