

## ACCESSORIES

# HANDLES

Styled for all types of applications, designed for long wear; quality construction equals that of high-priced counterparts.

**H-9110-B** Chrome Plated.  
Mounting Centers: 6.00".  
Hardware: (2) 10-32 x .37" screws.  
Hand Clearance: 1.25".  
Material: .37" dia. steel, angular formed.



**H-9111-B** Chrome Plated.  
Mounting Centers: 4.00".  
Hardware: (2) 10-32 x .37" screws.  
Hand Clearance: .93".  
Material: .37" dia. steel.



**H-9112-B** Chrome Plated.  
Mounting Centers: 6.00".  
Hardware: (2) 10-32 x .37" screws.  
Hand Clearance: .93".  
Material: .37" dia. steel.



**H-9113-B** Chrome Plated.  
Mounting Centers: 8.00".  
Hardware: (2) 10-32 x .37" screws.  
Hand Clearance: .93".  
Material: .37" dia. steel.



**H-9114-B** Chrome Plated.  
Mounting Centers: 8.00".  
Hardware: (2) 1/4"-28 x .50" screws.  
Hand Clearance: 1.50".  
Material: .50" dia. steel.



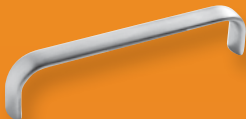
**H-9116-B** Chrome Plated.  
Mounting Centers: 6.00".  
Hardware: (2) 1/4"-28 Hex nuts.  
Hand Clearance: .93".  
Material: .37" dia. steel.



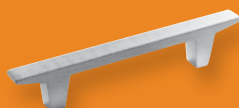
**H-9170-B** Clear anodized aluminum.  
Mounting Centers: 2.75".  
Hardware: (2) 8-32 x .62" screws.  
Hand Clearance 1.18"



**H-9174-B** Clear anodized aluminum.  
Mounting Centers: 4.00".  
Hardware: (2) 8-32 x .37" screws.  
Hand Clearance 1.09"



**H-9176-B** Clear anodized aluminum.  
Mounting Centers: 3.25".  
Hardware: (2) 8-32 x .37" screws.  
Hand Clearance .75"



**H-9160-B** Chrome Plated.  
Mounting Centers: 3.50".  
Hardware: (2) 1/4"-28 Hex nuts.  
Hand Clearance 1.68".  
Material: .37" dia. steel.



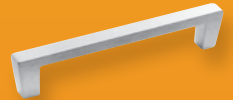
**H-9161-B** Chrome Plated.  
Mounting Centers: 5.25".  
Hardware: (2) 1/4"-28 Hex nuts.  
Hand Clearance 1.68".  
Material: .37" dia. steel.



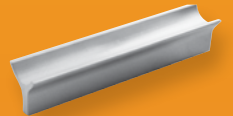
**H-9166-B, H-9168-B**  
Finish: Chrome Plated.  
Mounting Centers: H-9166-B: 1.90".  
H-9168-B: 3.00".  
Hardware: (2) 6-32 x .50" screws.  
Hand Clearance: 1.00".  
Material: 25" dia. brass.



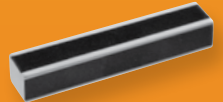
**H-9177-B** Clear anodized aluminum.  
Mounting Centers: 4.37".  
Hardware: (2) 8-32 x .37" screws.  
Hand Clearance .75"



**H-9179-B** Clear anodized aluminum.  
Mounting Centers: 4.00".  
Hardware: (2) 8-32 x .37" screws.  
Hand Clearance. 62"



**H-9180-B** Clear anodized aluminum.  
Black trim. Mounting Centers: 4.00".  
Hardware: (2) 8-32 x .25" screws.



**H-9183-B** Clear anodized aluminum.  
Mounting Centers: 4.56".  
Hardware: (2) 8-32 x .37" screws.  
Minimum hand Clearance 1.09"



**LH-9358** Non-Locking Latch Handle  
Interchangeable with existing key lock  
used on Series 60, Economizer, Series  
2000 Doors.

