

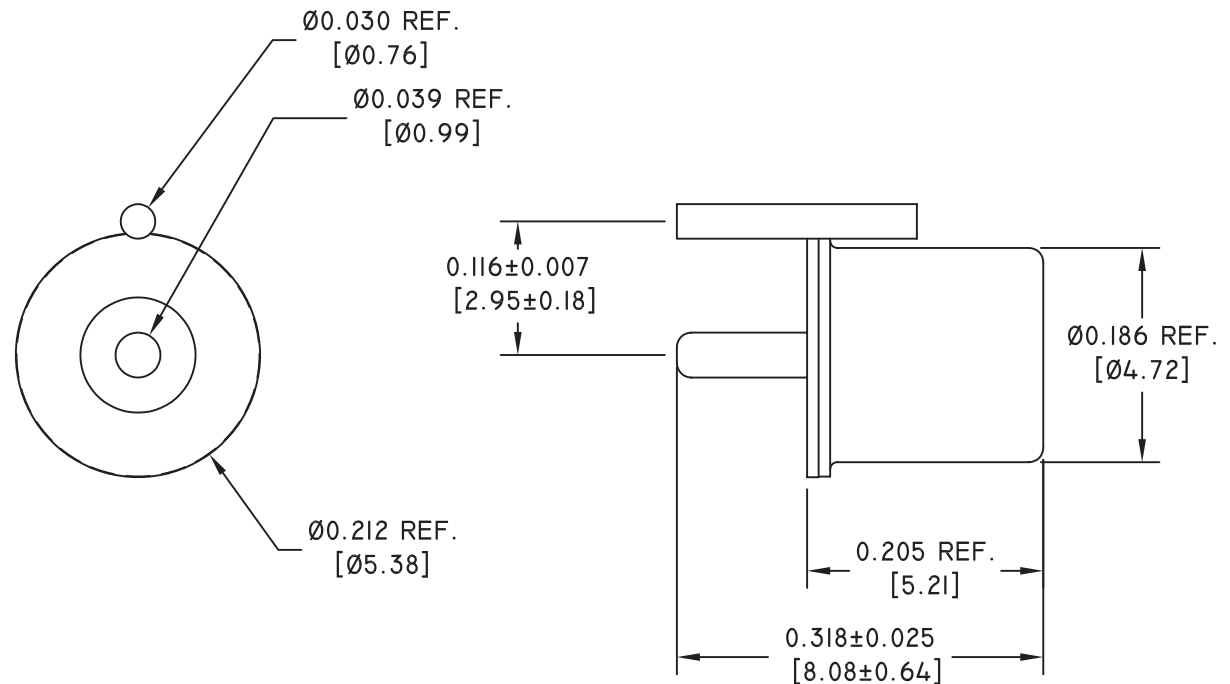
DRAWING #: AG2401-I

REV.	DATE	REVISION DESCRIPTION	DR.
A	11/07/05	SEE ECN 2005-102	L.L.

ROHS COMPLIANT

NOTES:

1. ELECTRICAL:
 - 1.1 CONTACT CAPACITY 24 VOLTS MAX., 0.20 AMPS MAX., 5 VA MAX.
 - 1.2 CONTACT RESISTANCE 100 OHMS MAX. AT 5 VOLTS DC
2. OPERATE:
 - 2.1 SWITCH MAY BE CLOSED OR OPEN IN ANY STATIONARY POSITION
 - 2.2 SWITCH WILL EXHIBIT CHANGE OF STATE UPON MOVEMENT IN ANY POSITION
 - 2.3 OPERATING TEMPERATURE -37° C TO 100° C
3. FINISH:
 - 3.1 TIN PLATED



COMUS INTERNATIONAL

454 ALLWOOD ROAD, CLIFTON, NEW JERSEY 07012

TEL. (973) 777-6900

ENGINEERING			UNSPECIFIED TOLERANCES DECIMAL: .XX ±.01 [.254] .XXX ±.005 [.127] FRACTIONAL: ± 1/64 [.397] ANGULAR: ± 1/2°	REF.:	SCALE:	DRAWN BY:	DATE
QUALITY					NONE	L.L.	11/05/2005
PRODUCTION				TITLE: MOVEMENT/ VIBRATION SENSOR			
APPROVAL	SIGNATURE	DATE			DRAWING #:		AG2401-I