


# Series 5600


## 9/16" Center-to-Center Spacing Double Row Terminal Blocks




### Features:

- **Durable, Hi-Temp, Thermoset, Plastic** is self-extinguishing, resists breakage and conforms to UL94V-0
- **Terminal Flexibility** is ideal for surface mount, sub-panel or chassis connections. One thru 22 terminals. 9/16" center-to-center spacing.
- **Economical Closed-Back Design** does not require costly insulation strip
- **Broad Wire Range** using 8-32 or 10-32 external twin screws, UL recognized for No. 22 AWG to No. 10 AWG. Variations include double solder lug, single solder lug, wire wrap, solder pin and printed circuit pin
- **UL/cUL Electrical Ratings**  
50Amp up to 600VAC dependent on options
- **Recognition**  
Various terminal types are UL recognized and UL recognized to CSA standards.

 Designed to meet UL Standard 1059,  
Guide No. XCFR2.

 Designed to meet CSA Guide  
No. 184-N-90.

 Designed to meet IEC 947-7-1.

### Specifications:

Center-to-Center Spacing: 9/16" (14.29mm)

Wire Range: No. 22AWG. to No. 8AWG.

(No. 8 with ring lug for #10 screw only.)

Number of Terminals: 1 thru 22

Voltage Rating: 600V

Current Rating:

50A with #8 or #10 screw and ring lug

40A with #10 screw

(Options may affect current rating.)

Tightening Torque:

16 in-lbs. with #8 screw

20 in-lbs. with #10 screw

Housing:

Material: Phenolic

Continuous Use Temp: 150°C

Flammability Rating: 94V-0

Water Absorption: .04%

Chemical Resistance: Slightly affected by  
5% caustic solution

Breakdown Voltage (Typical):

Terminal - Terminal 8400 Vrms

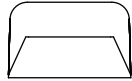
Terminal - Ground 8900 Vrms

Specifications are subject to change.

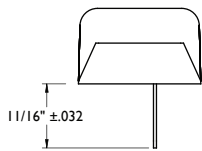


# Series 5600

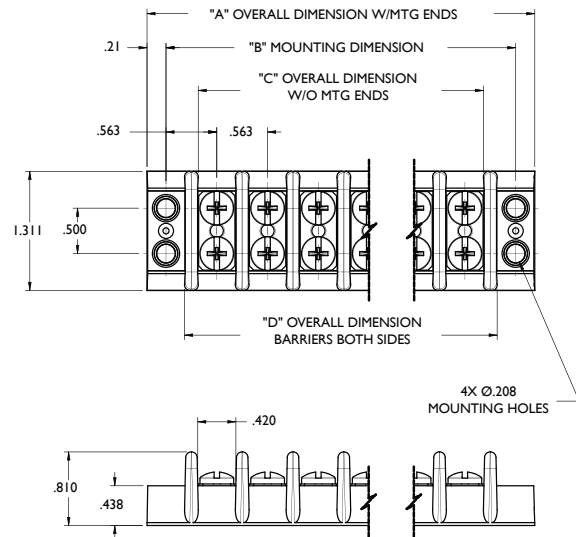
## Variations



0 = Flush Mount



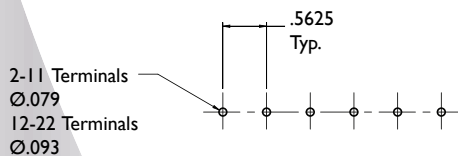
I = Turret Type Solder Terminal



## Terminal Block Dimensions

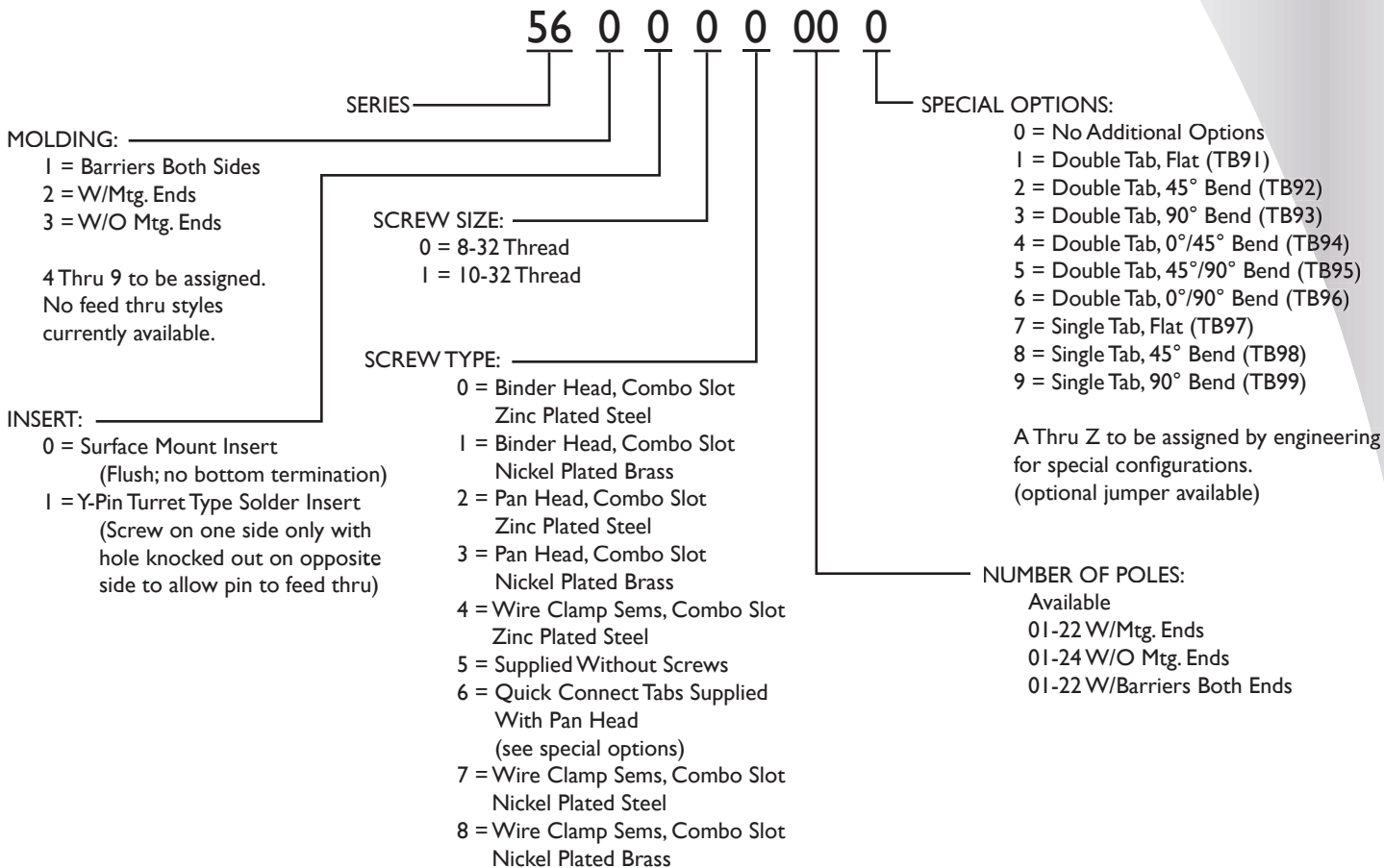
No. of Poles	"A" (Max-Min) Overall Dim. w/Mtg. Ends	"B" (Max-Min) Mtg. Dim.	"C" (Max-Min) Overall Dim. w/o Mtg. Ends	"D" (Max-Min) Overall Dim. w/Barrier
1	1.527-1.563	1.113-1.137	0.414-0.426	0.697-0.713
2	2.084-2.132	1.670-1.706	0.971-0.995	1.254-1.282
3	2.640-2.700	2.226-2.274	1.527-1.563	1.810-1.850
4	3.221-3.245	2.783-2.843	2.084-2.132	2.367-2.419
5	3.781-3.809	3.363-3.387	2.640-2.700	2.943-2.967
6	4.342-4.374	3.924-3.952	3.221-3.245	3.504-3.532
7	4.902-4.938	4.484-4.516	3.781-3.809	4.064-4.096
8	5.463-5.503	5.045-5.081	4.342-4.374	4.625-4.661
9	6.023-6.067	5.605-5.645	4.902-4.938	5.185-5.225
10	6.584-6.632	6.166-6.210	5.463-5.503	5.746-5.790
11	7.144-7.196	6.726-6.774	6.023-6.067	6.306-6.354
12	7.705-7.761	7.287-7.339	6.584-6.632	6.867-6.919
13	8.265-8.325	7.847-7.903	7.144-7.196	7.427-7.483
14	8.828-8.888	8.408-8.468	7.705-7.761	7.988-8.048
15	9.388-9.452	8.970-9.030	8.265-8.325	8.550-8.610
16	9.949-10.017	9.531-9.595	8.828-8.888	9.111-9.175
17	10.509-10.581	10.091-10.159	9.388-9.452	9.671-9.739
18	11.070-11.146	10.652-10.724	9.949-10.017	10.232-10.304
19	11.630-11.710	11.212-11.288	10.509-10.581	10.792-10.868
20	12.193-12.273	11.773-11.853	11.070-11.146	11.353-11.433
21	12.753-12.837	12.335-12.415	11.630-11.710	11.915-11.995
22	13.314-13.402	12.898-12.978	12.193-12.273	12.475-12.559
23	--	--	12.753-12.837	--
24	--	---	13.314-13.402	--

## P.C. Board Drilling Dimensions

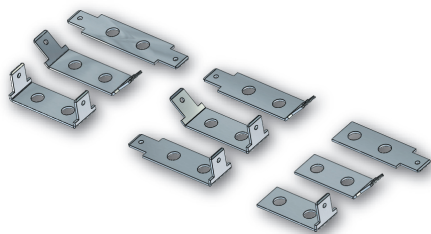


# 9/16" Center-to-Center Spacing Double Row Terminal Blocks



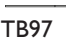
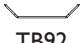
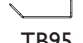
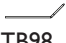
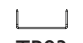


## Ordering Information:



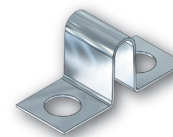
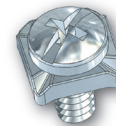
## Accessories



.250" x .032" quick connect tabs available in 9 different styles. Tin-plated brass tabs are held in place by terminal screws. Terminal blocks can accommodate 1 to 6 terminations per pole. Factory assembled or shipped bulk.

Double Sided		Single Sided
 TB91	 TB94	 TB97
 TB92	 TB95	 TB98
 TB93	 TB96	 TB99

Wire clamp captivated screws eliminate the need for lugs. Available for both 8-32 & 10-32 thread options, these screws accept up to No. 10AWG wire and may be factory installed or shipped bulk.



Jumpers constructed of plated brass permit connections of 2 poles.