

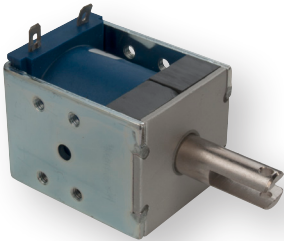


Deltrol CONTROLS

New Magnetic Latching Solenoid Series

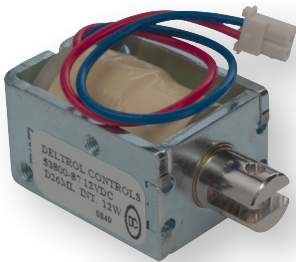
- Energy Saving Latching Solenoids for DC Applications
- Designed for low duty cycle applications
- Compatible with low DC battery power applications

D4-ML



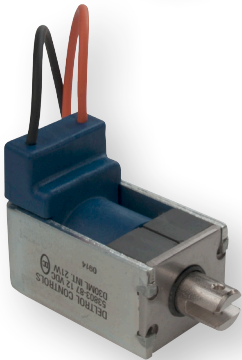
Parts No.	Voltage	Duty Cycle	Power	Resistance (Ohms)	Operation	Typical Force (oz). 100% Voltage, 77° F, Stroke @				
						0.000"	0.125"	0.250"	0.500"	0.750"
53802-86	6 VDC	Intermittent	29 Watts	1.22	Pull	121	90	73	37	15
53802-87	12 VDC			4.92						
53802-88	24 VDC			20						
53802-92	6 VDC	Pulse	115 Watts	0.30		121	148	133	87	36
53802-93	12 VDC			1.22						
53802-94	24 VDC			4.92						

D26-ML



Parts No.	Voltage	Duty Cycle	Power	Resistance (Ohms)	Operation	Typical Force (oz). 100% Voltage, 77° F, Stroke @				
						0.000"	0.125"	0.250"	0.500"	0.750"
53800-86	6 VDC	Intermittent	12 Watts	3	Pull	109	47.1	31	14.3	0
53800-87	12 VDC			12						
53800-88	24 VDC			48						
53800-92	6 VDC	Pulse	48 Watts	0.75		109	71.2	46.8	19.4	0
53800-93	12 VDC			3						
53800-94	24 VDC			12						

D30-ML



Parts No.	Voltage	Duty Cycle	Power	Resistance (Ohms)	Operation	Typical Force (oz). 100% Voltage, 77° F, Stroke @				
						0.000"	0.125"	0.250"	0.500"	0.750"
53803-86	6 VDC	Intermittent	21 Watts	1.7	Pull	96	65	46	19.7	7.7
53806-87	12 VDC			6.8						
53803-88	24 VDC			27.2						
53803-92	6 VDC	Pulse	85 Watts	0.42		96	172	152	99	31
53803-93	12 VDC			1.7						
53803-94	24 VDC			6.8						