

Product Upgrade

No. 122

Direct from IDEC Corporation

May 31, 2004



New WindLDR Upgrade Version 4.5

IDEC is pleased to announce the latest upgrade to our WindLDR PLC programming software, Version 4.5. WindLDR is a Windows based ladder logic programming tool to program all IDEC PLCs. At IDEC, we understand how important it is to have intuitive programming software that's simple and easy to use. WindLDR's new features include: a split ladder window for easy navigation, improved tag name editor, and rung comment search. Programming and documenting your PLC can now be accomplished with just a couple of clicks and has never been easier.

When you purchase or download IDEC WindLDR software, fill out the registration form and you will be notified when future upgrades become available. With WindLDR v4.5 you can be confident that you're getting the simplest, most intuitive ladder programming software in today's market. On top of that, our support department is available to answer all

of your programming questions and explain WindLDR's new features.

Visit us at www.idec.com/software to download the WindLDR 4.5 upgrade. Note that this is only an upgrade file, and you must already have WindLDR v4.0 or higher on your PC in order to install it.

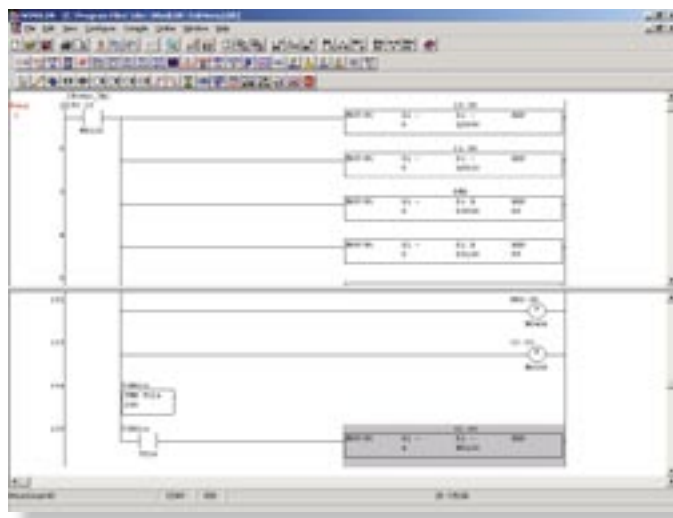
con't on back

New Features:

- Improved tag name editor
- Added communication ports up to COM8
- Improved PLC selection dialog box
- Rung comment search
- Macro instruction for setting analog module parameters
- Split ladder window
- Ladder editor screen can be saved in bitmap format

Standard Features:

- Programming tool for IDEC PLCs
- Easy to use
- Supports: FA2J, FA3S, Micro1, Micro3, Micro3C, OpenNet Controller, and MicroSmart PLCs
- Operates on Windows XP, ME, 2000, 98, 95 and Win NT v4.0
- Free upgrades via Web (www.idec.com/software)
- Upgrade only applicable to users of WindLDR v4.0 or higher

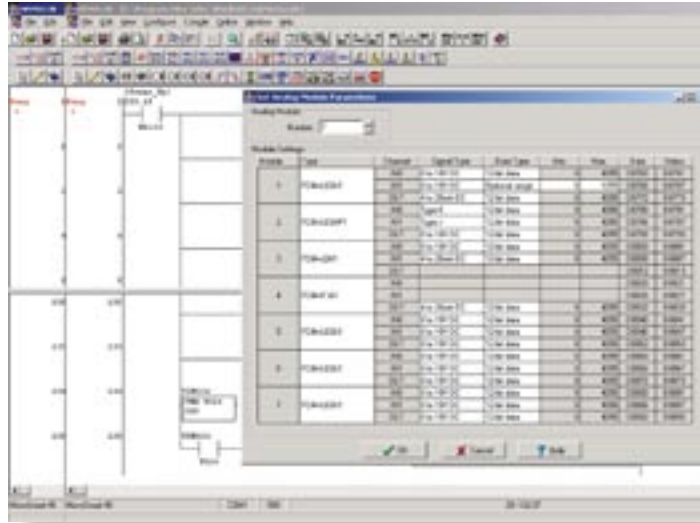


con't from front

For those users who are not familiar with WindLDR software, you may download a free demo version of the software. The demo version features all of the same functionality as the new WindLDR v4.5 software, except that it will not allow you to communicate with the PLC.

For additional information, please contact Technical Support at 800-262-IDEDEC (press 2) or email support@idec.com.

IDEC Corporation
1-800-262-IDEDEC (4332)
1175 Elko Drive • Sunnyvale, CA 94089
Fax: 408-745-5258 • www.idec.com



MicroSmart

EXPANDING YOUR CONTROL

Programmable Logic Controller



- Two types of CPU modules: All-in-one and slim types.
- Expansion of I/O terminals is possible (All-in-one type: up to 88 I/O, Slim type: up to 264 I/O)
- In addition to the RS232C port built into the CPU module, another communication port can be added (RS232C or RS485).
- The analog voltage input function on the slim type CPU module and analog I/O module enhances the processing capacity of analog signals.

The MicroSmart is the next generation of programmable logic controller. These flexible, adaptable PLCs are as compact as they are powerful, so you can create the system you need without increasing your space requirements or your budget.

Each MicroSmart module is equipped with a standard power supply circuit, four high-speed counters, an RS-232C port and an analog potentiometer. The housing is extremely compact, it is only 90mm in height and 70mm deep.

The Slim type and the 24 I/O CPU module can be expanded with the optional modules. There are 18 available expansion modules including four analog I/O modules. Depending upon the CPU, you can create a system with as many as 264 I/O points. Each MicroSmart module can be enhanced with a memory cartridge for programs or a real-time clock and calendar cartridge, and an RS-485 communications adapter or an additional RS-232 adapter. These adapters allow the MicroSmart to connect to PCs, printers, barcode

readers, or other RS-232 devices as well as to IDEC operator interfaces or other PLCs. The MicroSmart can also be linked to as many as 32 other MicroSmart modules as a master or slave, or as a slave to an OpenNet Controller or PC.

The newest accessory in the MicroSmart series is the HMI module, a plug-in LCD unit for display and monitoring. It fits directly into the All-in-One module or into the HMI Base Module for use with the slim type module. The HMI module can access certain menus and edit values, even while the system is operational. MicroSmart modules are programmable with WindLDR, IDEC's intuitive ladder logic software. Programs can be stored on the optional memory cartridges and transferred between modules. The CPU modules also feature user program read/write protection.