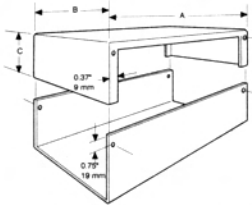


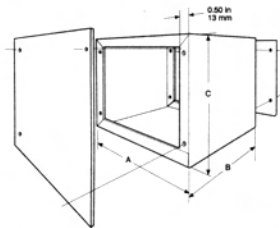
1411 SERIES ALUMINUM UTILITY ENCLOSURE



- .040" thick aluminum
- Unpainted or ASA 61 grey backed enamel finish (outside only)
- Unpainted version is protected with a plastic skin cover to ensure high quality finish
- Four self-tapping screws included

Mfr. No.		Dimensions (In)		
Painted	Unpainted	A	B	C
1411B	1411BU	2.7	2.2	1.6
1411C	1411CU	3.2	2.2	1.1
1411D	1411DU	3.2	2.2	1.6
1411F	1411FU	4.0	2.2	3.0
1411G	1411GU	4.0	2.2	1.6
1411H	1411HU	4.0	2.2	2.2
1411K	1411KU	5.0	2.2	2.2
1411L	1411LU	5.0	4.0	3.0
1411M	1411MU	6.0	3.0	3.0
1411N	1411NU	5.0	3.0	2.2
1411P	1411PU	6.0	5.0	4.0
1411Q	1411QU	7.0	5.0	3.0
1411R	1411RU	8.0	6.0	3.5
1411S	1411SU	8.0	4.0	3.0
1411T	1411TU	10.0	2.2	1.6
1411U	1411UU	10.0	6.0	3.5
1411W	1411WU	12.0	3.0	2.2
1411X	1411XU	12.0	7.0	4.0
1411Z	1411ZU	17.0	5.0	4.0

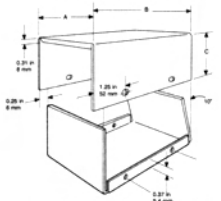
1415 SERIES STEEL UTILITY ENCLOSURE



- Sizes A - E are 20 gauge 0.036" thick steel
- Sizes F - J are 18 gauge 0.048" thick steel
- ASA 61 grey baked enamel finish
- Self-tapping screws included
- Models with "B" dimension less than 5" have only one hole per side, centered in "B".

Mfr. No.	Dimensions (In)		
	A	B	C
1415A	4	2	4
1415B	4	3	5
1415C	6	4	5
1415D	6	6	6
1415E	9	5	6
1415F	10	7	8
1415G	12	6	7
1415H	10	8	10
1415I	12	8	11
1415J	15	7	9

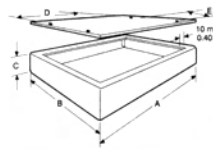
1454 SERIES INSTRUMENT ENCLOSURE



- Made of strong, economical 20 gauge steel
- Light grey panels with textured black covers
- Choice of sloping or vertical front panels by reversing the case
- 6-32 Philips nickel plated screws and self-adhesive rubber feet included

Mfr. No.	Dimensions (In)		
	A	B	C
1454C	4	2.5	2
1454E	4	5	2
1454F	4	6	3
1454G	6	2.5	2
1454H	5	7.5	2.5
1454J	4	3	4
1454K	8	3.5	2.5
1454L	5	6	4
1454M	4	3	6
1454P	10	5	3.5
1454R	5	5	7.5

1441 & 1431 SERIES STEEL CHASSIS



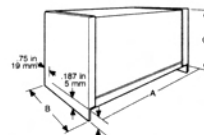
- Spot welded heavy duty construction
- Available in a natural aluminum finish or painted ASA 61 grey baked enamel
- Covers are punched with 4 holes - 3/16" in diameter
- Hardware not provided

Mfr. No.		Gauge	Dimensions (In)				
Chassis	Cover		A	B	C	D	E
STEEL CHASSIS AND COVER							
1441-6	1431-6	20	4	4	2	3.6	3
1441-8	1431-8	20	6	4	2	5.6	3
1441-9	1431-10	20	8	4	1	7.6	3
1441-10	1431-10	20	8	4	2	7.6	3
1441-12	1431-12	20	7	5	2	6.6	3
1441-14	1431-14	20	9	5	2	8.6	3
1441-15	1431-16	20	10	6	1	9.6	4
1441-16	1431-16	20	10	6	2	9.6	4
1441-18	1431-18	20	13.5	5	2	13.1	3
1441-20	1431-20	20	17	4	3	16.6	3
1441-22	1431-22	20	12	8	2	11.6	6
1441-24	1431-22	20	12	8	3	11.6	6
1441-26	1431-26	20	16	8	2	15.6	6
1441-28	1431-26	20	16	8	3	15.6	6
1441-29	1431-29	20	12	10	2	11.6	8
1441-30	1431-30	20	17	10	2	16.6	8
1441-32	1431-30	20	17	10	3	16.6	8
1441-33	1431-30	20	17	10	4	16.6	8
1441-34	1431-34	18	17	12	2	16.6	10
1441-36	1431-34	18	17	12	3	16.6	10
1441-38	1431-38	18	17	14	3	16.6	12
1441-40	1431-38	18	17	14	4	16.6	12
1441-42	1431-38	18	17	14	5	16.6	12

1444 & 1434 SERIES ALUMINUM CHASSIS

Mfr. No.		In Thick	Dimensions (In)				
Chassis	Cover		A	B	C	D	E
ALUMINUM CHASSIS AND COVER							
1444-6	1434-6	.040	4	4	2	3.6	3
1444-8	1434-8	.040	6	4	2	5.6	3
1444-9	1434-10	.040	8	4	1	7.6	3
1444-10	1434-10	.040	8	4	2	7.6	3
1444-12	1434-12	.040	7	5	2	6.6	3
1444-14	1434-14	.040	9	5	2	8.6	3
1444-15	1434-16	.040	10	6	1	9.6	4
1444-16	1434-16	.040	10	6	2	9.6	4
1444-18	1434-18	.040	13.5	5	2	13.1	3
1444-20	1434-20	.040	17	4	3	16.6	3
1444-22	1434-22	.051	12	8	2	11.6	6
1444-24	1434-22	.051	12	8	3	11.6	6
1444-26	1434-26	.051	16	8	2	15.6	6
1444-28	1434-26	.051	16	8	3	15.6	6
1444-29	1434-29	.051	12	10	2	11.6	8
1444-30	1434-30	.051	17	10	2	16.6	8
1444-32	1434-30	.051	17	10	3	16.6	8
1444-33	1434-30	.051	17	10	4	16.6	8

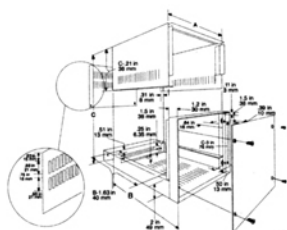
1451 SERIES STEEL CHASSIS COVER



- For use with the 1441 & 1444 series chassis
- 20 gauge steel ends welded to a perforated steel wrapper
- ASA 61 grey baked enamel finish
- 4 self-tapping screws included

Mfr. No.	Dimensions (In)			Use with Chassis Size
	A	B	C	
1451-10	8	4	5.2	4 x 8
1451-14	9	5	5.2	5 x 9
1451-16	10	6	5.2	6 x 10
1451-22	12	8	5.2	8 x 12
1451-26	16	8	5.2	8 x 16
1451-30	17	10	5.2	10 x 17

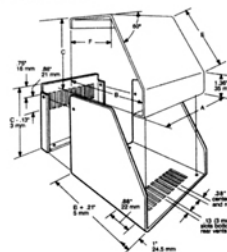
1452 SERIES INSTRUMENT ENCLOSURE



- 20 gauge steel cover and 18 gauge base and frame (for strength)
- Finished in light grey
- Easy to machine .064" thick aluminum panels painted satin black (one side only)
- Philips nickel plated screws and self-adhesive rubber feet included

Mfr. No.	Dimensions (In)		
	A	B	C
1452DE11	7.5	10.9	8.5
1452FF13	9.5	12.9	9.5
1452FH17	9.5	16.9	11.5
1452GC6	10.5	5.9	6.5
1452HD7	11.5	6.9	7.5
1452KE9	13.5	8.9	8.5
1452PG9	17.5	8.9	10.5

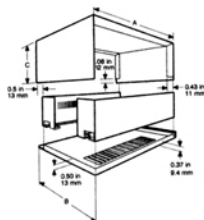
SCEM SERIES SLOPED INSTRUMENT ENCLOSURE



- Convection ventilation is provided by slots in the bottom and removable rear panels
- Aluminum case is finished in satin blue with a light grey panel
- Hardware and rubber feet included

Mfr. No.	Dimensions (In)					
	A	B	C	E	F	
SCEM101110WH	4	4.5	4	3	2.9	
SCEM161110WH	6.5	4.5	4	3	2.9	
SCEM161414WH	6.5	5.5	5.5	4.7	3.1	
SCEM251414WH	10	5.5	5.5	4.7	3.1	
SCEM251619WH	10	6.5	7.5	7	2.9	
SCEM351619WH	14	6.5	7.5	7	2.9	

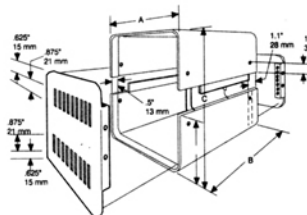
1426 SERIES INSTRUMENT ENCLOSURE



- Top and bottom made in 20 gauge steel (for strength)
- Finished in a light grey or satin blue
- Easy to machine 0.064" thick aluminum panels front and rear
- Rear panel and bottom of enclosure is vented
- Front panel is satin black, rear panel matches case color
- 6-32 Philips nickel plated screws and self-adhesive rubber feet included

Mfr. No.		Dimensions (In)		
		A	B	C
Off White	Satin Blue			
1426K	1426K-B	6	5	4
1426M	1426M-B	8	6	4
1426O	1426O-B	10	7	4
1426Q	1426Q-B	11	11.7	5.5
1426S	1426S-B	12	6	4
1426V	1426V-B	12	8	4
1426W	1426W-B	12	10	4
1426Y	1426Y-B	12	6	5.5

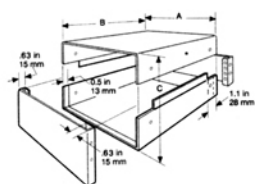
1401 SERIES INSTRUMENT ENCLOSURE



- 20 gauge steel top & bottom halves finished in light grey
- 0.064" thick aluminum panels, front finished in satin black and vented back finished in light grey
- Rear panel is vented top and bottom
- 6-32 Philips nickel plated screws and self-adhesive rubber feet included

Mfr. No.	Dimensions (In)		
	A	B	C
1401AAA	4	6	4
1401AA	6	6	5
1401A	6	10	5
1401C	8	10	9
1401E	8	8	8
1401G	10	12	9
1401K	10	14	6.5
1401M	12	8	9
1401N	14	8	9
1401P	14	10	5

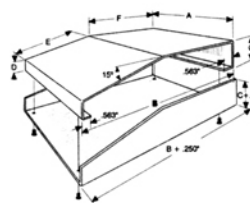
1458 SERIES INSTRUMENT ENCLOSURE



- 20 gauge steel case with black or blue satin finish
- Easy to machine 0.064" thick aluminum panels front and rear (one satin black and one light grey)
- Symmetrical design so either end panel can be front
- 6-32 Philips nickel plated screws and self-adhesive rubber feet included

Mfr. No.		Dimensions (In)		
		A	B	C
Satin Black	Satin Blue			
1458A3	1458A3B	4	4	3
1458B4	1458B4B	6	4	4
1458C3	1458C3B	6	6	3
1458C4	1458C4B	6	6	4
1458D3	1458D3B	8	8	3
1458D4	1458D4B	8	8	4
1458D5	1458D5B	8	8	5
1458E3	1458E3B	8	10	3
1458E4	1458E4B	8	10	4
1458E5	1458E5B	8	10	5
1458G3	1458G3B	10	8	3
1458G4	1458G4B	10	8	4
1458G5	1458G5B	10	8	5

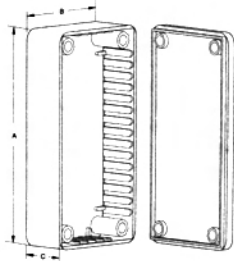
1456 SERIES SLOPED INSTRUMENT ENCLOSURE



- Aluminum cases 0.081" thick
- Sold pre-assembled with a textured blue case and a light grey top panel
- Comes with self adhesive rubber feet and required mounting hardware

Mfr. No.	Dimensions (In)						° of Slope
	A	B	C	D	E	F	
1456CE2WHBU	4	5.5	2	1.1	3.3	2.2	15°
1456KH3WHBU	10	8.3	3	1.3	6.3	2.2	15°
1456PL3WHBU	14	11.3	3	1.3	6.3	5.2	15°
1456FE3WHBU	6.5	5.5	3	1.1	3.7	2.2	30°
1456FG4WHBU	6.5	7.2	4	1.1	5.7	2.2	30°
1456KK4WHBU	10	10.2	4	1.1	5.7	5.2	30°
1456RK4WHBU	17	10.2	4	1.1	5.7	5.2	30°

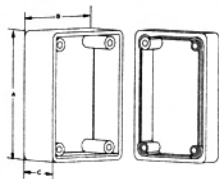
1591 SERIES PLASTIC GENERAL PURPOSE ENCLOSURES



- Ideally suited for mounting printed circuit boards
- Integral card guides molded in, accept 1.5 mm (0.062") P.C. cards.
- Two piece lap joint construction provides protection against dust accumulation and splashing water
- Designed to meet IP54
- Molded in flame retardant ABS plastic (carries a UL flammability rating of 94V-O at 1.47 mm (0.06") thickness) or economical black polystyrene plastic
- The ABS plastic lid is secured with M3 x 10 mm Philips machine screws, threaded into tapped integral brass bushings
- The styrene plastic lid is secured with self-tapping #4 x 0.5" Philips screws
- The lid adds .16" to overall height

Mfr. No.				Dimensions (In.)		
Black ABS	Blue ABS	Grey ABS	Black Styrene	A	B	C (no lid)
1591LBK	1591LBU	1591LGY	1591LSBK	3.3	2.2	1.4
1591ABK	1591ABU	1591AGY	1591ASBK	3.9	2.0	0.8
1591BBK	1591BBU	1591BGY	1591BSBK	4.4	2.4	1.1
1591CBK	1591CBU	1591CGY	1591CSBK	4.7	2.6	1.4
1591DBK	1591DBU	1591DGY	1591DSBK	5.9	3.2	1.8
1591EBK	1591EBU	1591EGY	1591ESBK	7.5	4.3	2.2
1591GBK	1591GBU	1591GGY	1591GSBK	4.8	3.7	1.2
1591HBK	1591HBU	1591HGY	1591HSBK	6.5	2.8	1.0
1591MBK	1591MBU	1591MGY	1591MSBK	3.3	2.2	0.8
1591SBK	1591SBU	1591SGY	1591SSBK	4.3	3.2	1.6
1591TBK	1591TBU	1591TGY	1591TSBK	4.7	3.2	2.2
1591UBK	1591UBU	1591UGY	1591USBK	4.7	4.7	2.2
1591VBK	1591VBU	1591VGY	1591VSBK	4.7	4.7	3.5

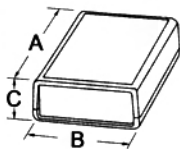
1594 SERIES ABS PLASTIC HEAVY DUTY ENCLOSURES



- Rugged electronic instrument enclosures, ideally suited for mounting printed circuit boards
- Heavy duty with an average wall thickness of .13" (3.3 mm)
- Molded in flame retardant ABS plastic (carries a UL flammability rating of 94V-O at 1.47 mm (0.06") thickness) or economical grey styrene
- Designed to meet IP54
- Countersunk ABS lid is secured with four M3 x 0.5" x 0.71" (18 mm) Philips machine screws threaded into tapped integral brass bushings
- Countersunk styrene plastic lid is secured with four #4 x 1" (25.4 mm) self-tapping screws

Mfr. No.				Dimensions (In.)			
Black ABS	Blue ABS	Grey ABS	Grey Styrene	A	B	C	Assembled Height
1594ABK	1594ABU	1594AGY	1594ASGY	2.2	2.2	1.1	1.6
1594BBK	1594BBU	1594BGY	1594BSGY	3.2	2.2	1.1	1.6
1594CBK	1594CBU	1594CGY	1594CSGY	4.1	2.6	1.3	1.8
1594DBK	1594DBU	1594DGY	1594DSGY	5.2	2.6	1.7	2.2
1594EBK	1594EBU	1594EGY	1594ESGY	6.6	4.2	2.1	2.6

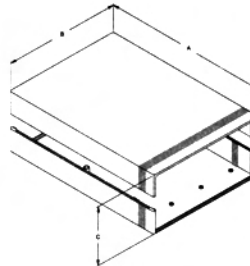
1593 SERIES HAND HELD INSTRUMENT ENCLOSURES



- Electronic instrument enclosures, ideally suited for mounting printed circuit boards
- Ergonomically designed for a comfortable fit into the user's hand
- Two piece lap joint construction provides protection against dust accumulation and splashing water
- Molded in choice of black or grey general purpose ABS plastic
- Unit is secured with self-tapping screws

Mfr. No.			Dimensions (In.)		
Black	Grey		A	B	C
1593KBK	1593KGY		2.6	2.6	1.1
1593SBK	1593SGY		3.6	2.6	.83
1593PBK	1593PGY		3.6	2.6	1.1
1593TBK	1593TGY		4.4	2.6	.83
1593QBK	1593QGY		4.4	2.6	1.1

1598 SERIES PLASTIC INSTRUMENT ENCLOSURES



- Modern low profile designed instrument enclosure.
- Two sets of vertical 1.5 mm (0.062") P.C. board guides are molded into case halves, front and rear
- Available in economical matte textured grey polystyrene or flame retardant ABS plastic (carries a UL flammability rating of 94V-O at 1.47 mm (0.06") thickness)
- Designed to meet IP54
- Integral horizontal P.C. card mounts on Eurocard centers
- Front & rear panels are 1.6 mm (0.064") brushed aluminum with paper on one side
- ABS plastic end panels also available.

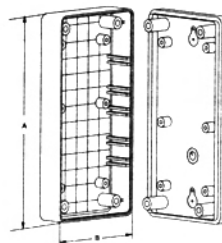
ABS PLASTIC ENCLOSURES

Mfr. No.			Dimensions (In.)		
Black	Blue	Grey	A	B	C
1598ABK	1598ABU	1598AGY	6.18	3.70	1.42
1598BBK	1598BBU	1598BGY	5.28	5.31	1.96
1598BBBK	1598BBBU	1598BBGY	7.05	6.06	1.42
1598CBK	1598CBU	1598CGY	7.09	6.10	2.04
1598DBK	1598DBU	1598DGY	7.09	8.11	2.52
1598EBK	1598EBU	1598EGY	6.30	6.30	3.38
1598FBK	1598FBU	1598FGY	9.84	6.30	1.58
1598GBK	1598GBU	1598GGY	9.84	6.30	3.00
1598HBK	1598HBU	1598HGY	11.02	7.87	1.58
1598JBK	1598JBU	1598JGY	11.02	7.87	3.00

POLYSTYRENE PLASTIC ENCLOSURES

Mfr. No.		Dimensions (In.)		
Grey case with metal panels	Grey case with black plastic panels	A	B	C
1598ASGY	1598ASGYPBK	6.18	3.70	1.42
1598BSGY	1598BSGYPBK	5.28	5.31	1.96
1598BSBGY	1598BSBGYPBK	7.05	6.06	1.42
1598CSGY	1598CSGYPBK	7.09	6.10	2.04
1598DSGY	1598DSGYPBK	7.09	8.11	2.52
1598ESGY	1598ESGYPBK	6.30	6.30	3.38
1598FSGY	1598FSGYPBK	9.84	6.30	1.58
1598GSGY	1598GSGYPBK	9.84	6.30	3.00
1598HSGY	1598HSGYPBK	11.02	7.87	1.58
1598JSGY	1598JSGYPBK	11.02	7.87	3.00

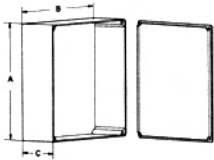
1599 SERIES PLASTIC LOW PROFILE HAND HELD ENCLOSURES



- Attractively styled and ergonomically designed for use as a "hand-held" instrument enclosure
- Two piece lap joint construction provides protection against dust accumulation and splashing water
- Extra deep top and ultra shallow base are specifically designed to enhance the aesthetics of the enclosure
- Designed to meet IP54
- Two keyhole knockouts are molded into the inside of the base to facilitate wall mounting installer

Mfr. No.		Dimensions (In.)		
ABS	Styrene	A	B	C
1599B	1599BSGY	5.12	2.56	0.98
1599E	1599ESGY	6.70	3.35	1.33
1599H	1599HSGY	8.66	4.33	1.73

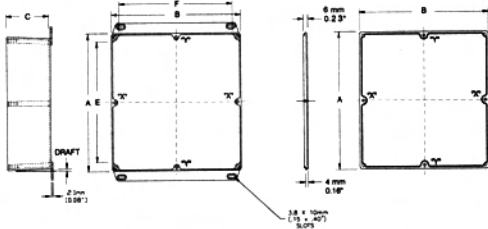
1590 SERIES DIECAST ALUMINUM ENCLOSURE



- Rugged diecast aluminum alloy
- Two piece lap joint construction provides protection against dust accumulation and splashing water.
- Provides for improved EMI/RFI shielding
- 6-32 x 1/2" machine screws secure lid into tapped holes
- Designed to meet IP54
- Assembled height = dimension "C" + .16"

Mfr. No.	Dimensions (in.)		
	A	B	C (no lid)
1590LB	1.99	1.99	1.06
1590H	2.07	1.50	1.06
1590A	3.64	1.52	1.06
1590B	4.39	2.34	1.06
1590BB	4.67	3.68	1.18
1590DD	7.40	4.70	1.30
1590S	4.35	3.21	1.57
1590J	5.71	3.74	1.77
1590P1	6.01	3.24	1.81
1590D	7.38	4.70	2.05
1590C	4.72	3.70	2.07
1590T	4.74	3.13	2.17
1590U	4.70	4.70	2.17
1590F	7.38	7.38	2.48
1590K	4.92	4.92	2.95
1590E	7.38	4.70	3.07
1590V	4.70	4.70	3.54

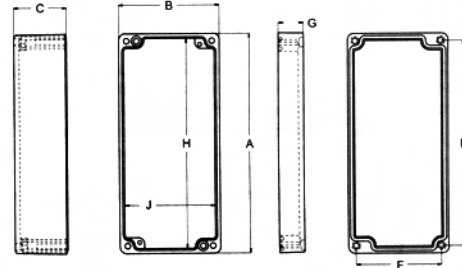
1590 SERIES DIECAST ALUMINUM FLANGED LID ENCLOSURE



- Rugged diecast aluminum alloy
- Two piece lap joint construction provides protection against dust accumulation and splashing water.
- Provides for improved EMI/RFI shielding
- Flanged lid allows for easy mounting to walls or shelves
- The lid has four countersunk holes cast into the flanges
- The flange allows for added security as the lid screws are hidden against the wall or shelf
- 6-32 x 1/2" machine screws secure lid into tapped holes
- Designed to meet IP54
- Assembled height = dimension "C" + .16"

Mfr. No.	Dimensions (in.)		
	A	B	C (no lid)
1590LFL	1.99	1.99	1.06
1590AFL	3.64	1.52	1.06
1590BFL	4.39	2.34	1.06
1590BBFL	4.67	3.68	1.18
1590DDFL	7.40	4.70	1.30
1590SFL	4.35	3.21	1.57
1590P1FL	6.01	3.24	1.81
1590DFL	7.38	4.70	2.05
1590CFL	4.72	3.70	2.07
1590TFL	4.74	3.13	2.17
1590UFL	4.70	4.70	2.17
1590FFL	7.38	7.38	2.48
1590EFL	7.38	4.70	3.07
1590VFL	4.70	4.70	3.54

1590 Z SERIES WATERTIGHT, HEAVY-DUTY, THICK WALL DIECAST ALUMINUM ENCLOSURE

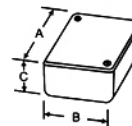


- Rugged diecast aluminum alloy
- Two piece "tongue & groove" construction with a neoprene gasket
- Provides protection against dust accumulation and water. Ideal for repetitive opening and closing
- Four recessed stainless steel machine screws secure lid into tapped holes
- Includes neoprene "O" rings
- Models 1590Z100, 1590Z120, 1590Z150 & 1590Z160 include mounting shelves and 6 drilled & tapped holes for mounting or grounding
- Models 1590Z110, 1590Z130 & 1590Z135 include

- 2 drilled and tapped holes for mounting or grounding
- Models 1590Z135 & 1590Z160 also include a drilled & tapped grounding hole in the lid
- Designed to meet IP65

Mfr. No.	Dimensions (in.)				Lid Ground	Mounting Shelf
	A	B	C (no lid)	G		
1590Z100	2.94	3.14	1.57	.47	No	Yes
1590Z110	2.94	3.14	1.57	.47	No	No
1590Z120	4.92	3.15	1.72	.62	No	Yes
1590Z130	6.89	3.15	1.61	.47	No	No
1590Z135	6.89	3.15	1.61	.79	Yes	No
1590Z150	8.70	4.76	2.39	.79	No	Yes
1590Z160	6.30	6.30	2.76	.79	Yes	Yes

1551 SERIES MINIATURE PLASTIC ENCLOSURE



- Miniature electronic enclosure, ideally suited for mounting printed circuit boards
- Molded in a choice of black or grey general purpose ABS plastic
- 2 P.C. board standoffs molded into interior
- Two piece lap joint construction provides protection against dust accumulation and splashing water
- Designed to meet IP54
- Available with or without keyring kit. Models with keyring kit are predrilled in narrow side.

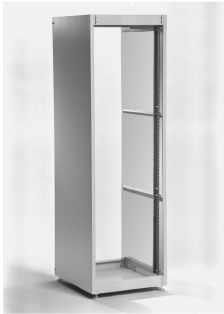
1551 SERIES WITHOUT KEY RING

Mfr. No.		Dimensions (in.)		
Black	Grey	A	B	C
1551GBK	1551GGY	1.97	1.38	.67
1551HBK	1551HGY	2.36	1.38	.67
1551KBK	1551KGY	3.15	1.57	.67

1551 SERIES WITH KEY RING KIT

Mfr. No.		Dimensions (in.)		
Black	Grey	A	B	C
1551GRBK	1551GRGY	1.97	1.38	.67
1551HRBK	1551HRGY	2.36	1.38	.67
1551KRBK	1551KRGY	3.15	1.57	.67

REFK SERIES ECONOMY KNOCKDOWN RACK



- Standard 19" panel width (22" overall)
- 24" usable depth (24.5" overall)
- Includes 4 infinitely adjustable combination rack mount rails with full EIA spacing, 4 leveling feet and #10-32 clip nuts for rails
- Shipped in a flat pack container
- Simple assembly with one bolt in each corner to lock sides to the top and bottom
- Heavy-duty 16 gauge steel top, bottom and sides
- 14 gauge black steel rails
- Finished in a rugged textured enamel
- 2 horizontal rail supports per side on units 42" or higher

Mfr. No.		Dimensions (In.)		
Black	Grey	Height	Width	Depth
REFK1903524BK1	REFK1903524CG1	35	19	24
REFK1904224BK1	REFK1904224CG1	42	19	24
REFK1904924BK1	REFK1904924CG1	49	19	24
REFK1905624BK1	REFK1905624CG1	56	19	24
REFK1906324BK1	REFK1906324CG1	63	19	24
REFK1907024BK1	REFK1907024CG1	70	19	24
REFK1907724BK1	REFK1907724CG1	77	19	24

RSDF SERIES FLUSH SOLID DOOR



- Features lockable latch, magnetic catch, and spring-loaded hinge pins for easy installation
- Opens either left or right by inverting
- Allows full access to space between panel rails
- Mounts within the panel space flush with the rack frame

Mfr. No.		Dimensions (In.)	
Black	Grey	Height	Width
RSDF19035BK1	RSDF19035CG1	35	19
RSDF19042BK1	RSDF19042CG1	42	19
RSDF19049BK1	RSDF19049CG1	49	19
RSDF19056BK1	RSDF19056CG1	56	19
RSDF19063BK1	RSDF19063CG1	63	19
RSDF19070BK1	RSDF19070CG1	70	19
RSDF19077BK1	RSDF19077CG1	77	19

RSDL SERIES FLUSH LOUVERED DOOR



- Features lockable latch, magnetic catch, and spring-loaded hinge pins for easy installation
- Opens right hand only with louvers facing down
- Allows full access to space between panel rails
- Mounts within the panel space flush with the rack frame

Mfr. No.		Dimensions (In.)	
Black	Grey	Height	Width
RSDL19035BK1	RSDL19035CG1	35	19
RSDL19042BK1	RSDL19042CG1	42	19
RSDL19049BK1	RSDL19049CG1	49	19
RSDL19056BK1	RSDL19056CG1	56	19
RSDL19063BK1	RSDL19063CG1	63	19
RSDL19070BK1	RSDL19070CG1	70	19
RSDL19077BK1	RSDL19077CG1	77	19

CONTEMPRA 2 SERIES RACK



- Standard 19" panel width (22" overall)
- Comes pre-assembled with the following components and hardware:
 - 1 Contempra 2 frame
 - 1 pair of side panels
 - 1 solid door
 - 1 solid top
 - 4 full length, black, punched combination rails
 - 4 adjustable levelling feet
 - type 10-32 clip nuts

Mfr. No.		Dimensions (In.)		
Black	Grey	Height	Width	Depth
C2RR194223BK1	C2RR194223CG1	42	19	24
C2RR194231BK1	C2RR194231CG1	42	19	31.5
C2RR196323BK1	C2RR196323CG1	63	19	24
C2RR196331BK1	C2RR196331CG1	63	19	31.5
C2RR197023BK1	C2RR197023CG1	70	19	24
C2RR197031BK1	C2RR197031CG1	70	19	31.5
C2RR197823BK1	C2RR197823CG1	78	19	24
C2RR197831BK1	C2RR197831CG1	78	19	31.5

CDF SERIES FLUSH LOUVERED DOOR



- Constructed of 16 gauge steel
- Fits either front or back of frame
- Quick release hinge design allows for easy installation and removal.
- Features lockable latch

Mfr. No.		Dimensions (In.)	
Black	Grey	Height	Width
CDF1942LBK1	CDF1942LCG1	42	19
CDF1963LBK1	CDF1963LCG1	63	19
CDF1970LBK1	CDF1970LCG1	70	19
CDF1978LBK1	CDF1978LCG1	78	19

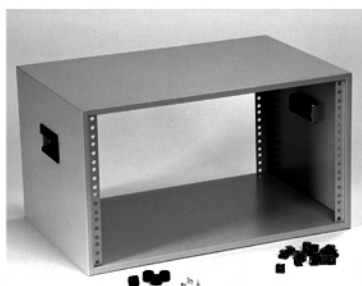
LIGHT DUTY RELAY RACK HEAVY DUTY RELAY RACK



- Provides complete access to equipment
- An economical option to an enclosed rack
- Welded construction, painted black
- Engineered for use as a solid, single, free-standing unit
- The light-duty rack is constructed of 12 gauge steel
- The heavy-duty rack is constructed of 10 gauge steel
- EIA spacing (0.5"-1.25"0 is standard on front flange only)
- Holes are drilled and tapped 10-32

Mfr. No.		Dimensions (In.)	
Light Duty	Heavy Duty	Height	Width
DNRR42LDW	DNRR42HDW	42	19
DNRR63LDW	DNRR63HDW	63	19
DNRR70LDW	DNRR70HDW	70	19
DNRR77LDW	DNRR77HDW	77	19
DNRR84LDW	DNRR84HDW	84	19

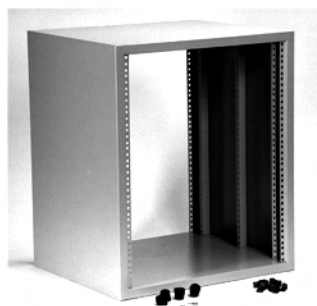
RCBS SERIES DESKTOP CASE



- Standard 19" panel width
- Constructed with 18 gauge steel
- Rails are fixed to case and feature punched EIA spacing in the front and rear
- Black ABS handles and rubber feet are included
- Clip nuts included

Mfr. No.		Dimensions (In.)		
Black	Grey	Height	Width	Depth
RCBS190031BK1	RCBS190031CG1	3.50	19	13.0
RCBS190051BK1	RCBS190051CG1	5.25	19	13.0
RCBS190051BK1	RCBS190051CG1	5.25	19	17.5
RCBS190071BK1	RCBS190071CG1	7.00	19	13.0
RCBS190071BK1	RCBS190071CG1	7.00	19	17.5
RCBS190081BK1	RCBS190081CG1	8.75	19	13.0
RCBS190081BK1	RCBS190081CG1	8.75	19	17.5
RCBS190101BK1	RCBS190101CG1	10.50	19	13.0
RCBS190101BK1	RCBS190101CG1	10.50	19	17.5
RCBS190121BK1	RCBS190121CG1	12.25	19	13.0
RCBS190121BK1	RCBS190121CG1	12.25	19	17.5
RCBS190141BK1	RCBS190141CG1	14.00	19	13.0
RCBS190141BK1	RCBS190141CG1	14.00	19	17.5

RCH SERIES DESKTOP CASE



- A larger desktop case suitable for 19" mounting requirements
- Standard 19" panel width
- Constructed with 18 gauge steel
- Rails are fixed to case and feature punched EIA spacing in the front and rear
- Clip nuts included

Mfr. No.		Dimensions (In.)		
Black	Grey	Height	Width	Depth
RCHS190081BK1	RCHS190081CG1	8.75	19	17.5
RCHS190101BK1	RCHS190101CG1	10.50	19	17.5
RCHS1901024BK1	RCHS1901024CG1	10.50	19	24.5
RCHS190141BK1	RCHS190141CG1	14.00	19	17.5
RCHS1901424BK1	RCHS1901424CG1	14.00	19	24.5
RCHS190171BK1	RCHS190171CG1	17.50	19	17.5
RCHS1901724BK1	RCHS1901724CG1	17.50	19	24.5
RCHS190221BK1	RCHS190221CG1	22.75	19	17.5
RCHS1902224BK1	RCHS1902224CG1	22.75	19	24.5
RCHS190281BK1	RCHS190281CG1	28.00	19	17.5
RCHS1902824BK1	RCHS1902824CG1	28.00	19	24.5

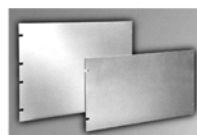
MOUNTING HARDWARE



- 10-32 clip nuts for all panel rails and most other mounting positions
- Sold in packages of 25 or 100

Mfr. No.	Qty. per package
1421N25	25
1421N100	100

STEEL AND ALUMINUM PANELS



- Available in flat 14 gauge steel (0.075") or aluminum (0.125")
- Mounting hardware not included
- Steel panels painted in smooth finish in black or light grey
- Aluminum panels available in a smooth finish painted black or light grey, or a natural aluminum finish

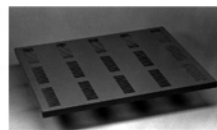
STEEL PANELS

Mfr. No.		Dimensions (In.)	
Black	Grey	Height	Width
PBPS19001BK2	PBPS19001CG2	1.75	19
PBPS19003BK2	PBPS19003CG2	3.50	19
PBPS19005BK2	PBPS19005CG2	5.25	19
PBPS19007BK2	PBPS19007CG2	7.00	19
PBPS19008BK2	PBPS19008CG2	8.75	19
PBPS19010BK2	PBPS19010CG2	10.50	19
PBPS19012BK2	PBPS19012CG2	12.25	19
PBPS19014BK2	PBPS19014CG2	14.00	19
PBPS19015BK2	PBPS19015CG2	15.75	19
PBPS19017BK2	PBPS19017CG2	17.50	19
PBPS19019BK2	PBPS19019CG2	19.25	19
PBPS19021BK2	PBPS19021CG2	21.00	19
PBPS19022BK2	PBPS19022CG2	22.75	19
PBPS19024BK2	PBPS19024CG2	24.50	19
PBPS19026BK2	PBPS19026CG2	26.25	19
PBPS19028BK2	PBPS19028CG2	28.00	19
PBPS19029BK2	PBPS19029CG2	29.75	19
PBPS19031BK2	PBPS19031CG2	31.50	19

ALUMINUM PANELS

Mfr. No.			Dimensions (In.)	
Black	Grey	Unfinished	Height	Width
PBPA19001BK2	PBPA19001CG2	PBPA19001UNF	1.75	19
PBPA19003BK2	PBPA19003CG2	PBPA19003UNF	3.50	19
PBPA19005BK2	PBPA19005CG2	PBPA19005UNF	5.25	19
PBPA19007BK2	PBPA19007CG2	PBPA19007UNF	7.00	19
PBPA19008BK2	PBPA19008CG2	PBPA19008UNF	8.75	19
PBPA19010BK2	PBPA19010CG2	PBPA19010UNF	10.50	19
PBPA19012BK2	PBPA19012CG2	PBPA19012UNF	12.25	19
PBPA19014BK2	PBPA19014CG2	PBPA19014UNF	14.00	19
PBPA19015BK2	PBPA19015CG2	PBPA19015UNF	15.75	19
PBPA19017BK2	PBPA19017CG2	PBPA19017UNF	17.50	19
PBPA19019BK2	PBPA19019CG2	PBPA19019UNF	19.25	19
PBPA19021BK2	PBPA19021CG2	PBPA19021UNF	21.00	19
PBPA19022BK2	PBPA19022CG2	PBPA19022UNF	22.75	19
PBPA19024BK2	PBPA19024CG2	PBPA19024UNF	24.50	19
PBPA19026BK2	PBPA19026CG2	PBPA19026UNF	26.25	19
PBPA19028BK2	PBPA19028CG2	PBPA19028UNF	28.00	19
PBPA19029BK2	PBPA19029CG2	PBPA19029UNF	29.75	19
PBPA19031BK2	PBPA19031CG2	PBPA19031UNF	31.50	19

VENTED & UNVENTED FIXED SHELF



- Fixes to combination rails with screws
- Adjustable mounting allows for use with most rail depth locations
- Vented shelf provides a sturdy shelf without obstructing upward heat movement

Mfr. No.	Mfr. No.	Dimensions (In.)	
Black-Vented	Black-Unvented	Width	Depth
RFVS1918BK1	RFUS1918BK1	19	18
RFVS1921BK1	RFUS1921BK1	19	21
RFVS1926BK1	RFUS1926BK1	19	26

23

RACKS & SMALL CASES