

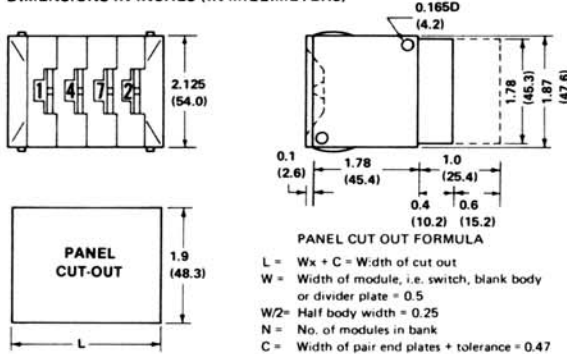
MODEL IF INTERMEDIATE FRONT MOUNT

A rugged front mount switch with large digits, 1/2" wide module. Snap-in front mounting requires no panel mounting hardware. Available in most popular 10 and 16-position codes.

Options and accessories include: Extended Boards for diode suppression, Internal Lighting, Termination Pins,

Blank Bodies, Half Bodies, Divider Plates, Connectors, etc. Matte black finish with white legends on black wheel standard. Gloss finish, other wheel colors and legends available.

DIMENSIONS IN INCHES (IN MILLIMETERS)



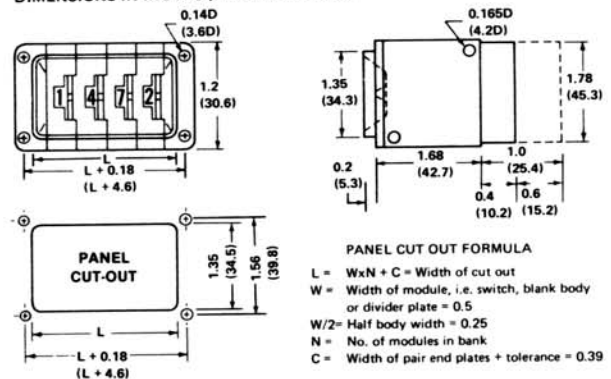
MODEL IR INTERMEDIATE REAR MOUNT

Rugged rear mount counterpart to our IF model, with large readable digits, 1/2" wide module. Available in most popular 10 and 16-position codes.

Options and accessories include: Extended Boards for diode suppression, Internal Lighting, Termination Pins, Stopping, Blank Bodies, Half Bodies,

Divider Plates, Connectors, etc. Matte black finish with white legends on black wheel standard. Gray bodies, gloss finish, other wheel colors and legends available.

DIMENSIONS IN INCHES (IN MILLIMETERS)

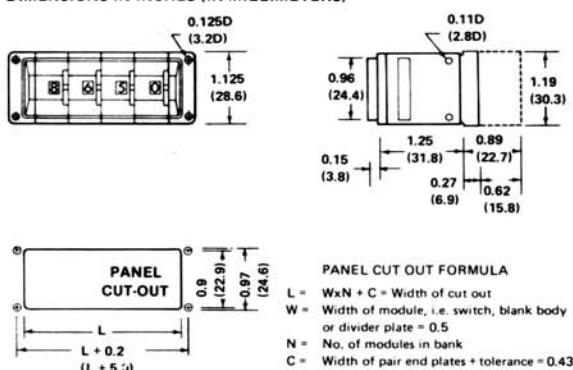


MODEL MR MINIATURE REAR MOUNT



Popular rear mount switch, 1/2" wide module but lower profile than IR model. Available in matte black in most popular 10-position codes including Decimal, BCD, and BCD plus Complements. Options and accessories include: Extended Boards for diode suppression, Stopping, Termination Pins, Internal Lighting, Sealing, etc.

DIMENSIONS IN INCHES (IN MILLIMETERS)



SPECIFICATIONS ALL MODELS

Contact Current: Contacts rated 2 amps @ 115VAC or 28VDC non-switching; 0.5 amps @ 28VAC or DC switching. Minimum recommended switching current 10 microamps @ 20 millivolts.

Voltage: 200 volts max DC (within power rating) or RMS.

Power: 24 watts max per switch with 12 watts max per energized output.

Insulation Resistance: 1000 megohms between adjacent contacts at 25°C and 20% relative humidity.

Contact Resistance: 0.1 ohms initial and 0.2 ohms after life test at 25°C.

Dielectric Strength: 500 VAC.

Moldings: High impact acetate body in matte black, gloss black or gray finish; wheels are polycarbonate in black with white legends standard, white with black legends for lighted versions, other colors available.

Contact Material: Stator has 0.0001" hard gold over 1 oz. copper on glass fibre as MIL-P-13949GF. Rotor has silver/gold alloy on beryllium copper.

Life: 1,000,000 detents minimum either direction.

Stops: Stops to limit switch to any position.

Panel Thickness: 1/16" to 5/32".

Operating Temperature: -20°C to 70°C. Storage temperature -40°C to 70°C.

Shock: 100 G's, 6 MS.

Vibration: 15 G's to 70-2000 Hz.

Humidity: 96 HRS, 95% relative.