

Basic Switches Snap-In Panel Mount

DM/DP Series

2

SWITCHES & KNOBS

Momentary Action

Alternate Action

Push-Pull

Pull-to-Cheat



Bullet nose plunger
(SPDT shown)



Bullet nose plunger
(DPDT shown)



Finger grip plunger
(DPDT shown)



Finger grip plunger
with flat tip (SPDT shown)



Finger grip plunger with
spherical tip (DPDT
shown)

FEATURES

- Attractive, rugged snap-in panel mount design — easy installation
- Choice of momentary, alternate push-pull and pull-to-cheat operation
- Quick-connect terminals
- Expected mechanical life: 1 million operations, 95% survival
- Temperature range: -35° to $+180^{\circ}\text{F}$ (-37° to 82°C)
- UL recognized file #E22779, CSA certified file #LR4442

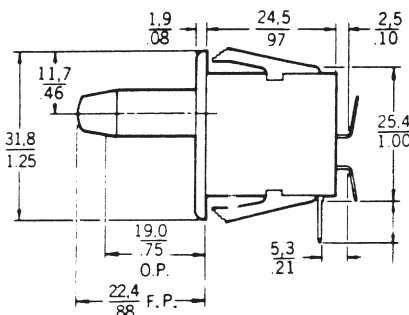
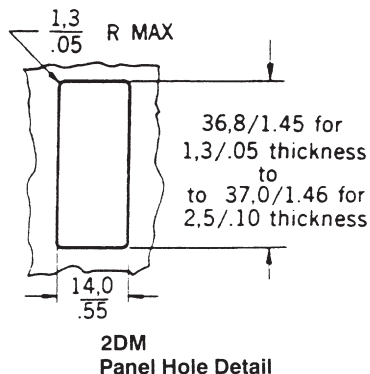
DM electrical rating — UL and CSA rating:
10 amps, 1/2 HP, 125, 250 or 277 VAC

DP electrical rating — UL standard 508,
14 amps 3/4 hp, 125, 250 VAC; Pilot Duty:
150 V A — 125, 250 VAC; 16 amps, 125,
250, 277 VAC, 3/4 hp, 125, 250 VAC; Pilot
Duty: 150 V A — 125, 250 VAC.

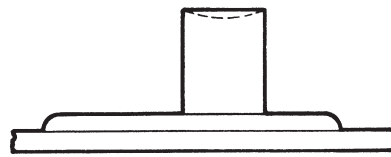
NOTE: Refer to MICRO SWITCH Catalog 30 for DM switches with snap-on pushbuttons.

MOUNTING DIMENSIONS

Dimensions shown are for reference only.



Convex
plunger



Concave
plunger

ALTERNATE ACTION

These switches have push-on, push-off operation. The alternate action is at two levels, with the maintained On position of the plunger at a lower level than the normal Off.

PUSH-PULL

When plunger is depressed, it remains down and maintains circuit transfer. Switch contacts return to the previous position when the plunger is pulled to the extended position.

PULL-TO-CHEAT

Pull-to-cheat operates normally as a momentary action switch. However, by pulling the plunger beyond the normal free position, a maintained On position is achieved.

POSSIBLE VARIATIONS

In addition to the standard quick-connect .188 x .020" (4.78 x 0.51 mm) terminals, angled forms and .250 x .032" (6.35 x 0.81 mm) terminals can be provided. DM plungers and faceplates are available in any combination of white, black, gray, or red.

