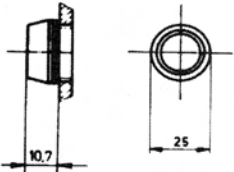


Round aluminum bezel style

IP40



Bezel Dimension



	Contact Block 1NO+1 NC	Bezel Standard
Momentary Switch	Base	504018
	1	504118
	2	504218
	3	504318
	4	504418
Maintained Switch	Base	514018
	1	514118
	2	514218
	3	514318
	4	514418
Indicator Lamp		554018

Lens Ø18mm IP40

	Opaque	Transparent
white	464015	465015
yellow	464115	465115
green	464215	465215
blue	464315	465315
red	464415	465415
black	464515	
orange	464615	465615

Bezels made of anodized aluminum alloy are also available in black anodized aluminum by adding the suffix 500 i.e. 404018 500.

COMMON INFORMATION

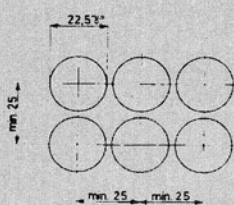
For a brighter light, all transparent lens can be specified with a clear lower lens diffuser. Use 010 suffix (i.e. 461012 010).

WIRING DIAGRAM



250V AC/5A (cos w 0.7)
Lamp holder T 1 3/4 MG

PANEL CUT-OUTS



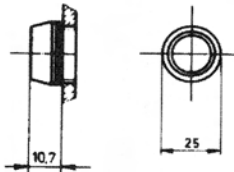
Momentary / Maintained / Signal Lamps

Round sealed aluminum bezel style

Special lens increases rating to IP65



Bezel Dimension



	Contact Block 1NO+1 NC	Bezel Standard
Momentary Switch	Base	504018
	1	504118
	2	504218
	3	504318
	4	504418
Maintained Switch	Base	514018
	1	514118
	2	514218
	3	514318
	4	514418
Indicator Lamp		554018

Lens Ø18mm IP65

	Opaque	Transparent
white	464001	465001
yellow	464101	465101
green	464201	465201
blue	464301	465301
red	464401	465401
black	464501	
orange	464601	465601

Bezels made of anodized aluminum alloy are also available in black anodized aluminum by adding the suffix 500 i.e. 404018 500. It is splash proof and oil tight in accordance with IP65.

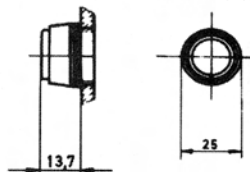
The IP65 standard (splash proof oil tight) is achieved with a sealing ring which comes supplied with corresponding lens.

Round sealed aluminum bezel style

With built-in silicone cap. IP65



Bezel Dimension



	Contact Block 1NO+1 NC	With Built-in Silicone Cap
Momentary Switch	Base	504033
	1	504133
	2	504233
	3	504333
	4	504433
Maintained Switch	Base	514033
	1	514133
	2	514233
	3	514333
	4	514433
Indicator Lamp		554033

Lens Ø18mm IP65

	Opaque	Transparent
white	464001	465001
yellow	464101	465101
green	464201	465201
blue	464301	465301
red	464401	465401
black	464501	
orange	464601	465601

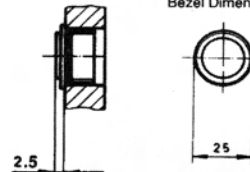
Bezels made of anodized aluminum alloy are also available in black anodized aluminum by adding the suffix 500 i.e. 404018 500. It is splash proof and oil tight in accordance with IP65.

Round flush metal bezel style

IP40



Bezel Dimension



	Contact Block 1NO+1 NC	Part Number
Momentary Switch	Base	504050
	1	504150
	2	504250
	3	504350
	4	504450
Maintained Switch	Base	514050
	1	514150
	2	514250
	3	514350
	4	514450
Indicator Lamp		554050

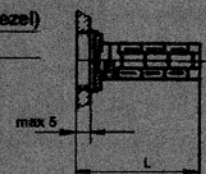
Lens Ø18mm

	Opaque	Transparent
white	464015	465015
yellow	464115	465115
green	464215	465215
blue	464315	465315
red	464415	465415
black	464515	
orange	464615	465615

Bezels made of anodized aluminum alloy are also available in black anodized aluminum by adding the suffix 500 i.e. 404018 500.

Dimensional Data for behind panel (not flush bezel)

Length = L	(mm)	Inches
Pole 1	26.5	1.043
Pole 2	35	1.373
Pole 3	43.5	1.713
Pole 4	52	2.047
Indicator lamp	22.5	.886



Dimensional Data for behind panel (flush bezel)

Length = L	(mm)	Inches
Pole 1	35	1.378
Pole 2	43.5	1.713
Pole 3	52	2.047
Pole 4	60.5	2.382
Indicator lamp	32	1.260

