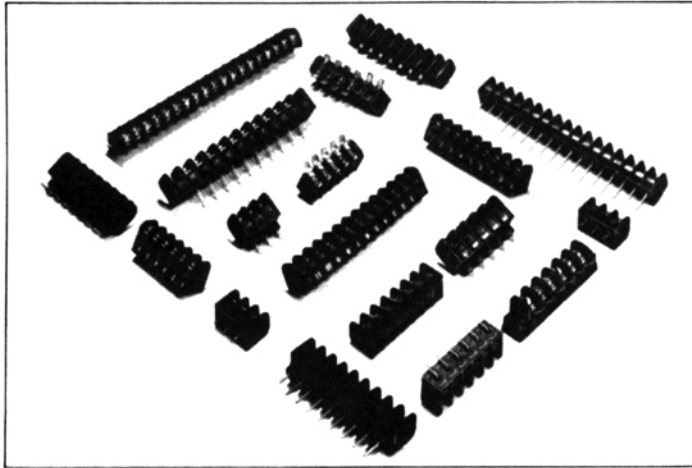


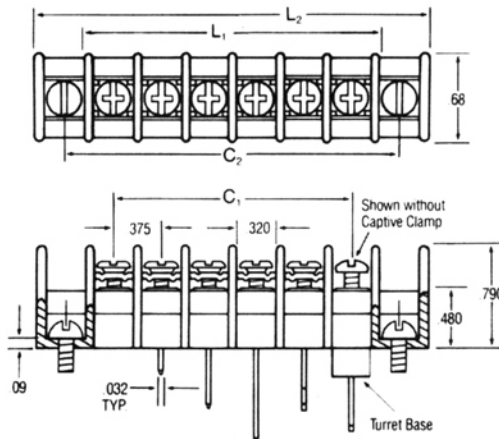


Series SSB6/7

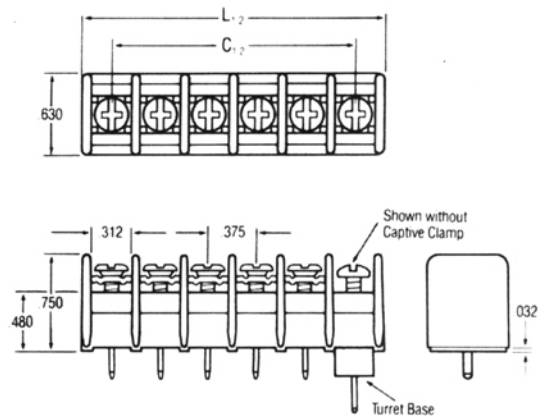


- Fast wiring – backed-out screws
 - 300V rating (SSB6)
600V rating (SSB7)
 - 5 Bottom terminal styles
 - Closed or turret bases
 - Polypropylene insulator
 - Stand-off models available
 - Strip lengths from 2 to 32 circuits
-  E63810
  LR25557

SSB6



SSB6R (Narrow Profile)



DIMENSIONS (All dimensions in inches)

Computing Barrier Block Lengths

Direct Mounting-Use C₁ & L₁ for P & H mounting options
End Position Mounting-Use L₂ & C₂ for M, E, F, G mounting options

SSB6 (.375 in.)

CKTS. (not positions)	C ₁ in.	L ₁ in.	C ₂ in.	L ₂ in.
01			.75	1.22
02	.38	.84	1.13	1.59
03	.75	1.22	1.50	1.97
04	1.13	1.59	1.88	2.34
05	1.50	1.97	2.25	2.72
06	1.88	2.34	2.63	3.09
07	2.25	2.72	3.00	3.47
08	2.63	3.09	3.38	3.84
09	3.00	3.47	3.75	4.22
10	3.38	3.84	4.13	4.59
11	3.75	4.22	4.50	4.97
12	4.13	4.59	4.88	5.34
13	4.50	4.97	5.25	5.72
14	4.88	5.34	5.63	6.09
15	5.25	5.72	6.00	6.47

CKTS. (not positions)	C ₁ in.	L ₁ in.	C ₂ in.	L ₂ in.
16	5.63	6.09	6.38	6.84
17	6.00	6.47	6.75	7.22
18	6.38	6.84	7.13	7.59
19	6.75	7.22	7.50	7.97
20	7.13	7.59	7.88	8.34
21	7.50	7.97	8.25	8.72
22	7.88	8.34	8.63	9.09
23	8.25	8.72	9.00	9.47
24	8.63	9.09	9.38	9.84
25	9.00	9.47	9.75	10.22
26	9.38	9.84	10.13	10.59
27	9.75	10.22	10.50	10.97
28	10.13	10.59	20.88	11.34
29	10.50	10.97	11.25	11.72
30	10.88	11.34	11.63	12.09
31	11.25	11.72		
32	11.63	12.09		