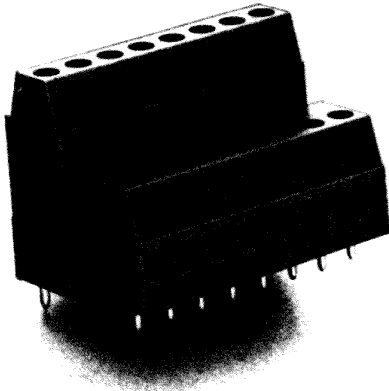


SERIES PA254/10.16 and PA254/15.24

5,08 mm Center-to-Center (Side by Side)
Spacing and 10,16 mm or 15,24 mm
Center-to-Center (Front to Back) Spacing



FEATURES

- **SPACE SAVING DESIGN** – Unique stacked design offers maximum wire density coupled with low P.C. board real estate requirements.
- **BLOCKS INTERLOCK TO OBTAIN LONGER LENGTHS** – Dovetail design allows headers to be joined for longer lengths while maintaining center-to-center spacing.
- **EASY WIRE INSERTION AND REDUCED CONNECTION TIME** – Terminals are provided in the open position and wire entry is tapered for easy entry and faster assembly.
- **ELIMINATES BROKEN SOLDER CONNECTIONS** – Terminal design eliminates transmission of tightening torque to P.C. board while installing wires.
- **SECURE WIRE CONNECTIONS** – Bar and collar design insures secure connections repeatedly and eliminates terminal degradation.
- **NO LOST OR MISSING SCREWS** – Screws are captive within housing.
- **BREAK RESISTANT AND FLAME RETARDANT** – Block molded in 94VO thermoplastic material.
- **SAFETY RECOGNITIONS** – UL recognized under file no. E62557, CSA certified under report no. LR39186-1, meets VDE 0110.



ENGINEERING SPECIFICATIONS

No. of Terminals: 2 + 2, 3 + 3, and 8 + 8

Wire Range: UL – No. 22-12 AWG, CSA – No. 22-12 AWG

Voltage Rating: VDE 0110 – 380 volts
UL & CSA – 300 volts

Current Rating: 15 amps

Housing:

Material: (Green) Polyamide 6

Flammability: UL94V-0

Continuous Use Temp.: 105°C

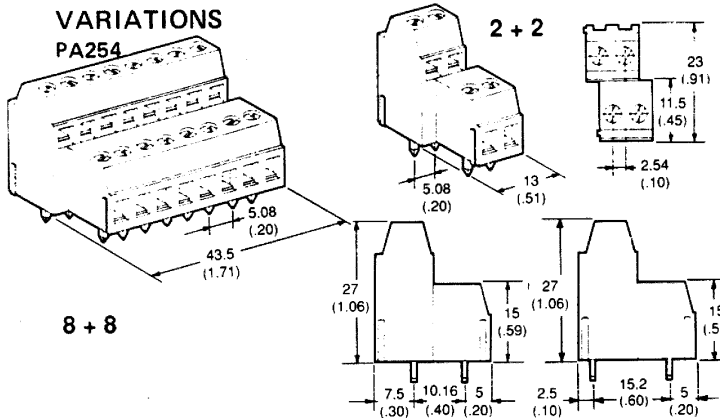
Metal Parts: Pin (.8mm x .9mm) Brass – Tin Plated

Connector Brass – Nickel Plated

M 3 x 5 Screw Steel – Zinc Plated

Tightening Torque: 4.5 in. – lb.

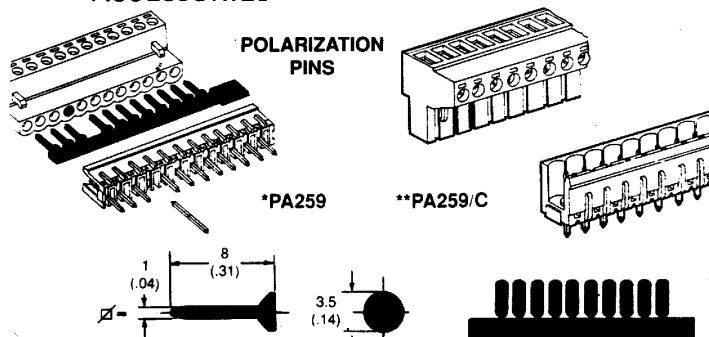
4
T
E
R
M
I
N
A
L
B
L
O
C
K
S



PA254/10.16 5,08 MM CENTER-TO-CENTER SPACING (.20") 10,16 MM PIN SPACE FRONT TO BACK		
No. of Terminals	Part Number	Overall Dimensions O.D.
2 + 2	PA254/10.16/2+2	13 mm .51"
3 + 3	PA254/10.16/3+3	17,8 mm .70"
8 + 8	PA254/10.16/8+8	43,5 mm 1.71"

PA254/15.24 5,08 MM CENTER-TO-CENTER SPACING (.20") 15,24 MM PIN SPACE FRONT TO BACK		
No. of Terminals	Part Number	Overall Dimensions O.D.
2 + 2	PA254/15.24/2+2	13 mm .51"
3 + 3	PA254/15.24/3+3	17,8 mm .70"
8 + 8	PA254/15.24/8+8	43,5 mm 1.71"

ACCESSORIES



*Use w/ PA252/5 & PA253/5
**Use w/ PA252/5,08 & PA253/5,08

